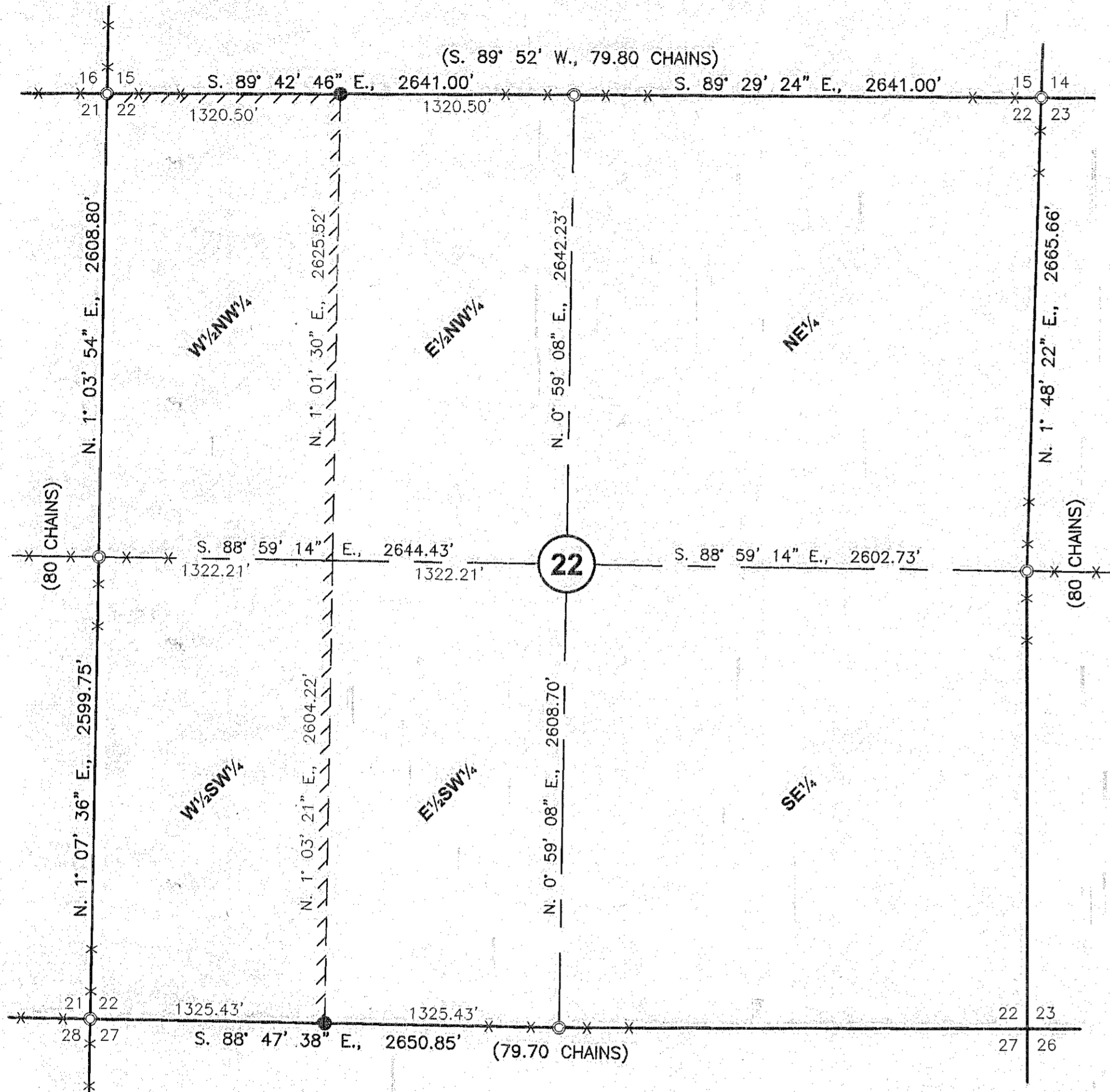


SECTION 22, T. 8 S., R. 42 E., W.M.



SCALE: 1" = 600'

BASIS OF BEARING  
EAST LINE OF THE NE¼ BEARS  
N. 1° 48' 22" E., Hubbs Dam Survey

CORNER ESTABLISHMENT NOTES

- T 8 S R 42 E**  
16 15  
21 22  
PLS 1817  
2001

**NORTHWEST CORNER OF SECTION 22**  
No original corner evidence found. Accepted fence intersection for the corner to Sections 15, 16, 21, and 22. Fences run East, West, and North from the fence intersection. Set a 2½" diameter brass cap on a 1" x 30" galvanized pipe. The cap is marked as shown in the corner diagram. See Baker County Survey No. 8-42-7 for Record of Corner Monumentation.
- T 8 S R 42 E**  
S 15  
¼ S 22  
PLS 1817  
2001

**NORTH ¼ CORNER OF SECTION 22**  
No original corner evidence found. Corner was reestablished in an East-West running fence line by single proportionate method between the Northwest and Northeast section corners of Section 22. Set a 2½" diameter brass cap on a 1" x 30" galvanized pipe, 10" above ground, surrounded by a mound of stone. The cap is marked as shown in the corner diagram. See Baker County Survey No. 8-42-8 for Record of Corner Monumentation.
- T 8 S R 42 E**  
15 14  
22 23  
PLS 1817  
2001

**NORTHEAST CORNER OF SECTION 22**  
No original corner evidence found. Found a drilled nail set at fence intersection. Fences run South and West from fence intersection. See Narrative for origin of drilled nail. Corner was reestablished at the position occupied by said drilled nail. Set a 2½" diameter brass cap on a 1" x 30" galvanized pipe. The cap is marked as shown in the corner diagram. See Baker County Survey No. 8-42-9 for Record of Corner Monumentation.
- T 8 S R 42 E**  
¼  
S 22 S 23  
PLS 1817  
2001

**EAST ¼ CORNER OF SECTION 22**  
No original corner evidence found. Found a drilled nail approximately 1' West of fence intersection. Fences run North, South, and East from fence intersection. See Narrative for the origin of the drilled nail. Corner was reestablished at the position occupied by said drilled nail. Set a 2½" diameter brass cap on a 1" x 30" galvanized pipe. The cap is marked as shown in the corner diagram. See Baker County Survey No. 8-42-10 for Record of Corner Monumentation.
- T 8 S R 42 E**  
¼ S 22  
S 27  
PLS 1817  
2001

**SOUTH ¼ CORNER OF SECTION 22**  
No original corner evidence found. Corner was reestablished at the position established by the Hubbs Dam Survey. Said survey established this corner at a fence intersection (fences ran East, West, and North from the fence intersection). Due to property line adjustments in the area the fence intersection no longer exists, only the East-West running fence remains. No trace of the drilled nail set by the Hubbs Dam Survey could be found. Set a 2½" diameter brass cap on a 1" x 30" galvanized pipe at the position established by the Hubbs Dam Survey. The cap is marked as shown in the corner diagram. See Baker County Survey No. 8-42-11 for Record of Corner Monumentation.
- T 8 S R 42 E**  
21 22  
28 27  
PLS 1817  
2001

**SOUTHWEST CORNER OF SECTION 22**  
No original corner evidence found. Found a drilled nail at fence intersection. Fences run North, South, and West from fence intersection. The drilled was set during the survey for Baker County Partition Plat No. P1996-005. The corner was reestablished at position occupied by said drilled nail. Set a 2½" diameter brass cap on a 1" x 30" galvanized pipe. The cap is marked as shown in the corner diagram. See Baker County Survey No. 8-42-12 for Record of Corner Monumentation.
- T 8 S R 42 E**  
¼  
S 21 S 22  
PLS 1817  
2001

**WEST ¼ CORNER OF SECTION 22**  
No original corner evidence found. Corner was reestablished at a fence intersection. Fences run Northwest, West, South, and East from fence intersection. Set a 2½" diameter brass cap on a 1" x 30" galvanized pipe, approximately 10" above ground in the Northwest corner of a rock jack. The cap is marked as shown in the corner diagram. See Baker County Survey No. 8-42-13 for Record of Corner Monumentation.

REFERENCES

- Baker County Partition Plat No. P1996-005
- Baker County Survey No. 8-42-7
- Baker County Survey No. 8-42-8
- Baker County Survey No. 8-42-9
- Baker County Survey No. 8-42-10
- Baker County Survey No. 8-42-11
- Baker County Survey No. 8-42-12
- Baker County Survey No. 8-42-13
- Baker County Survey No. 8-42-14

NARRATIVE

The purpose of this survey for George Voile is to monument the corners of Parcel No. 1 of Baker County Partition Plat No. P1996-005 lying within Section 22 of T. 8 S., R. 42 E., W.M. The Northeast corner of the W½SW¼ was not set this survey because it lands in the middle of the Powder River. The East line of the W½SW¼ and the East and North lines of the W½NW¼ were posted with steel fence posts. Section 22 was properly subdivided by this survey. Original GLO monumentation was extensively searched for at all corners but none was found. See Corner Establishment Notes above. Drilled nails were found at the Northeast corner and East quarter corner of said Section 22. The origin of these nails is from a survey performed by Jim Hanley in Section 23 for the purpose of description writing for the Hubbs Dam Project. No permanent monuments were set for the Hubbs Dam Survey therefore there was never a survey recorded in Baker County Survey records. With the use of private file information from the Hubbs Dam Survey, said nails are accepted and held as the basis of bearing. A drilled nail was also found at the Southwest corner of Section 22. Said nail was set by Baker County Partition Plat No. P1996-005.

LEGEND

- Set 5/8" rebar with plastic cap marked "HANLEY ENGR. PLS 1817".
- ⊙ Set brass cap monument as noted.
- ( ) Record G.L.O. Data.
- ///// Posted line, set steel fence posts.

HANLEY ENGINEERING, INC.

P.O. BOX 701, 2043 MAIN STREET, BAKER CITY, OREGON 97814 (541) 523-3803

MAP OF SURVEY  
SECTION 22, T. 8 S., R. 42 E., W.M.  
BAKER COUNTY, OREGON

Surveyed May 29 thru November 9, 2001  
for George Voile  
Scale: 1" = 600'

FILED December 7, 2001  
BAKER COUNTY SURVEYOR  
SURVEY NO. 8-42-15

REGISTERED  
PROFESSIONAL  
LAND SURVEYOR  
*Thomas J. Hanley*  
OREGON  
JULY 13, 1979  
THOMAS J. HANLEY  
1817

Renews June 30, 2003