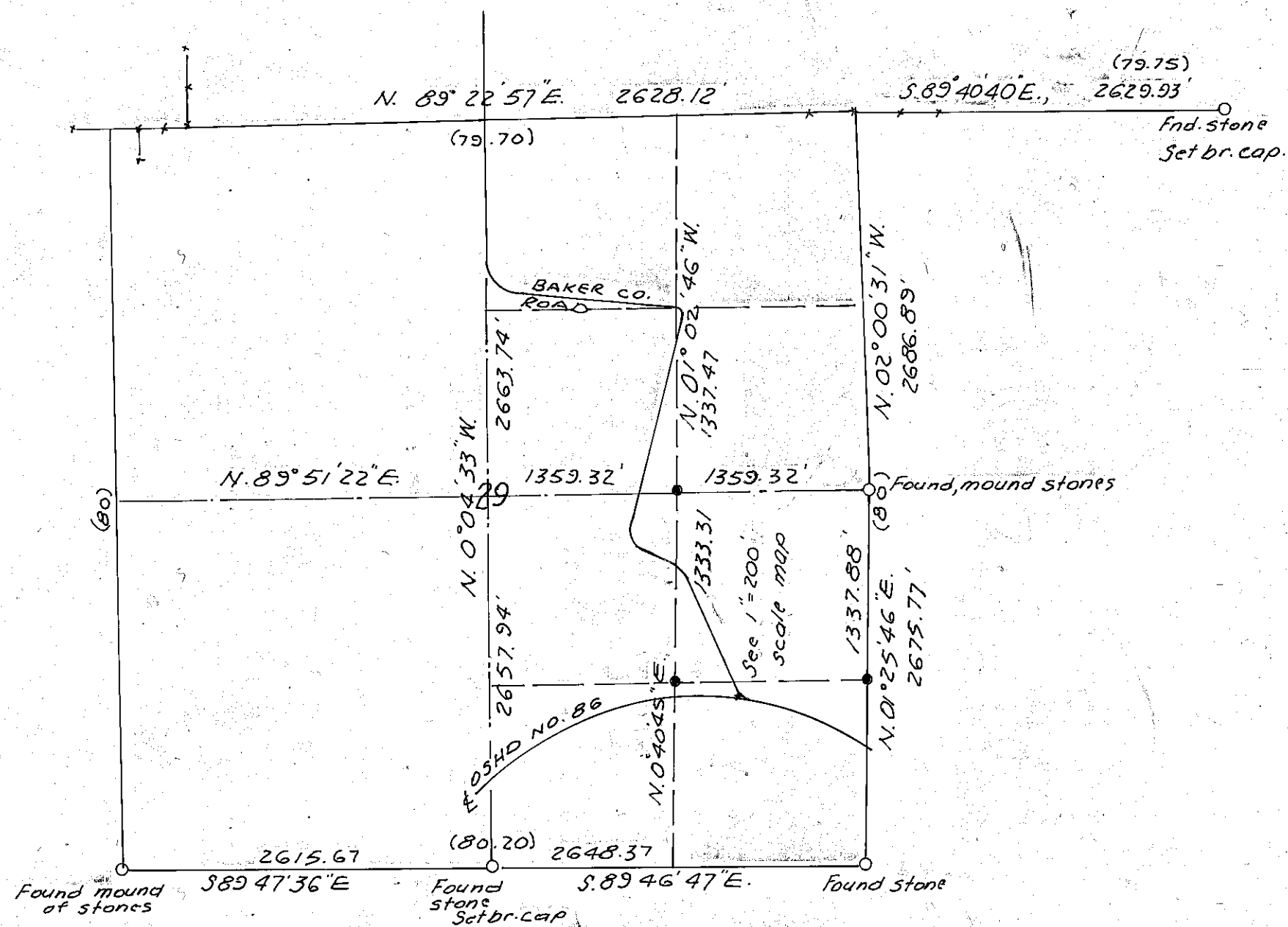


LEGEND

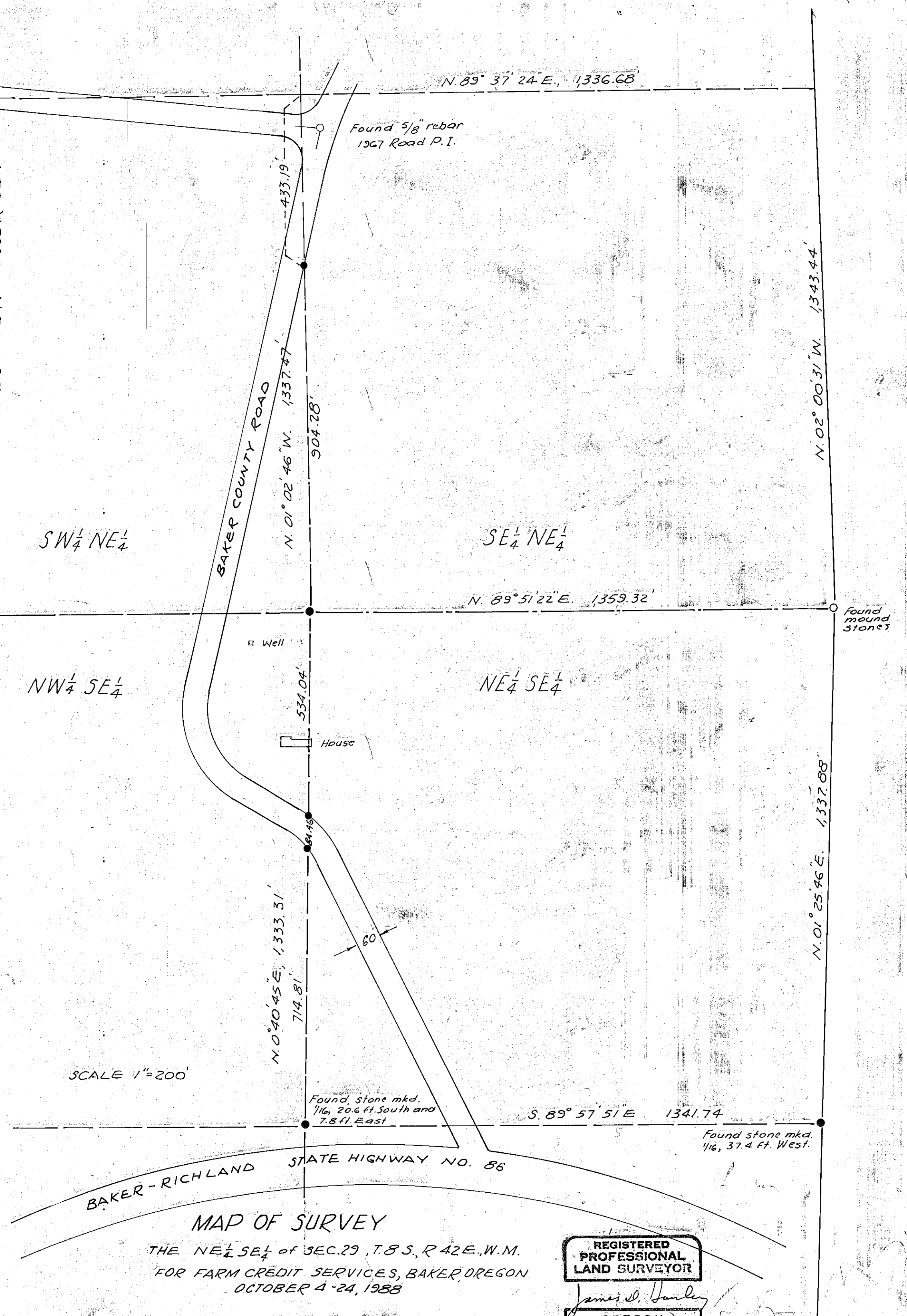
- Found, mon. as noted
- Set 5/8" x 30" rebar w/ plastic cap mkd. "HANLEY ENGR G. PLS 1206"
- () Original plat distance



SEC. 29, T. 8 S., R. 42 E., W. M.
SCALE 1" = 100'

NARRATIVE BY ATTACHMENT

BASIS OF BEARING: SOLAR OBS.



SCALE 1" = 200'

MAP OF SURVEY
THE NE 1/4 SE 1/4 of SEC. 29, T. 8 S., R. 42 E., W. M.
FOR FARM CREDIT SERVICES, BAKER, OREGON
OCTOBER 4-24, 1988

FILED Nov 4, 1988
BAKER COUNTY SURVEYOR
SURVEY NO. 8-42-2

REGISTERED
PROFESSIONAL
LAND SURVEYOR

James D. Hanley
OREGON
SEPTEMBER 23, 1977
JAMES D. HANLEY
1206