

# LOT LINE ADJUSTMENT

## ACCRUING TRACT

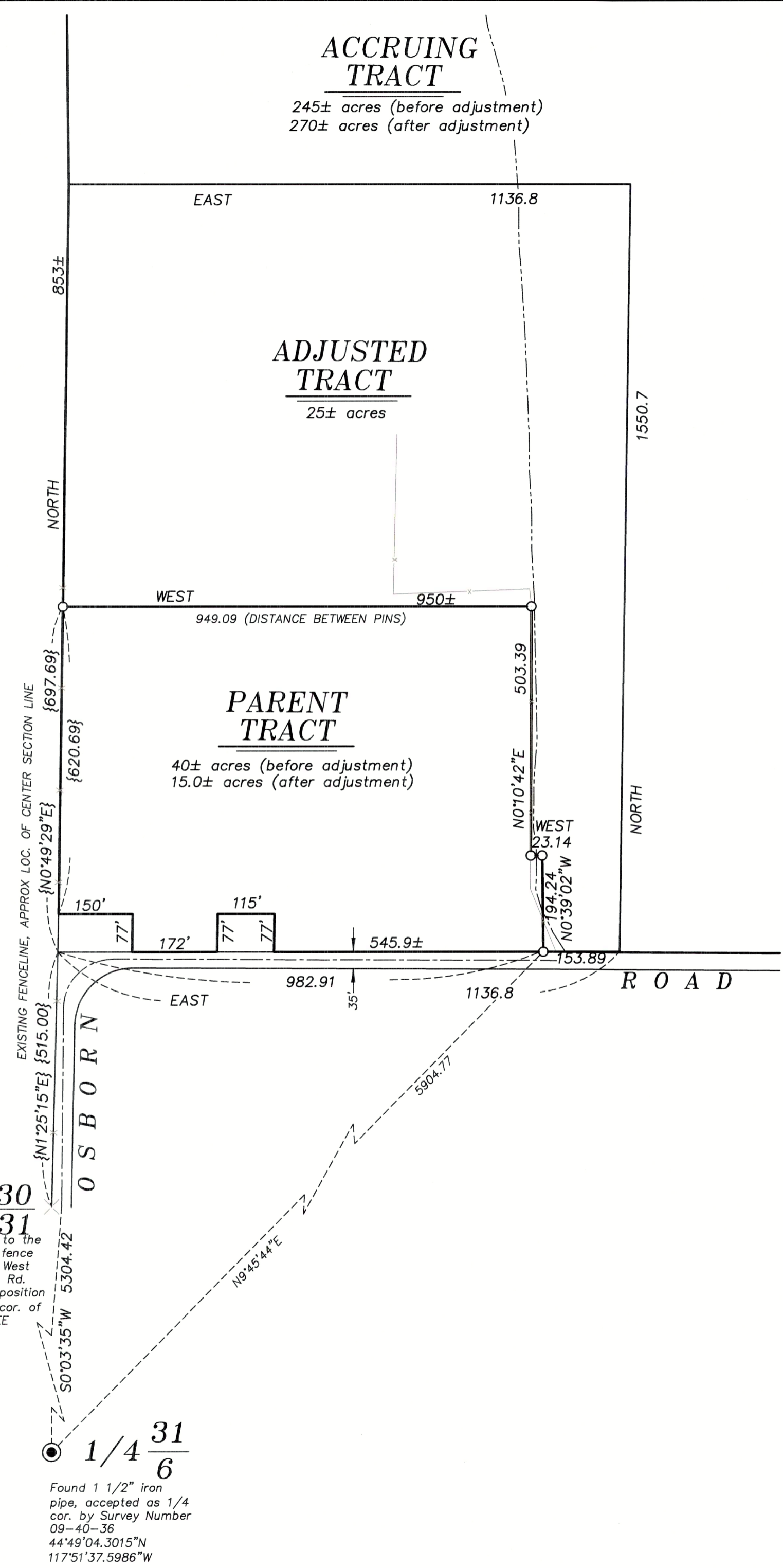
245± acres (before adjustment)  
270± acres (after adjustment)

## ADJUSTED TRACT

25± acres

## PARENT TRACT

40± acres (before adjustment)  
15.0± acres (after adjustment)



### LEGEND

- Found 1 1/2" iron pipe, accepted as quarter corner by Survey Number 9-40-36
- Set 5/8"x30" iron pin with plastic cap marked BGB SURVEY MARKER
- { } Measurement along existing fenceline, not aliquot line
- Centerline
- x- Fenceline
- - - Ditch

### BASIS OF BEARING

True geodetic North at the corner common to Sections 8, 9, 16 and 17, Township 9 South, Range 40 East of the Willamette Meridian, as determined by GPS observation

**SCALE: 1" = 200'**

### NARRATIVE

This survey was done at the request of Roy Anderson, owner of the land within. Mr. Anderson wanted a lot line adjustment surveyed and monumentd.

There is a gross lack of monumentation within this area, and lines falling on aliquot lines, or running parallel with aliquot lines, as shown on this exhibit should be considered approximate only. Measurements along a fenceline were used for the North/South centerline. For the South boundary of this property a due East/West running line was used running the record 515 feet North of a fence corner at the approximate location of the South quarter corner of Section 30. This does NOT purport to be a true and accurate retracement of aliquot lines, and the beginning and terminus of this adjusted line shall be shortened or extended to the true aliquot lines. Nor does it claim to accept this fence corner as the actual quarter corner position. There was no attempt to locate Section Corners and thus I cannot determine conclusively whether this fence corner, the center of the road, or any other physical feature represents the true quarter corner position or not.

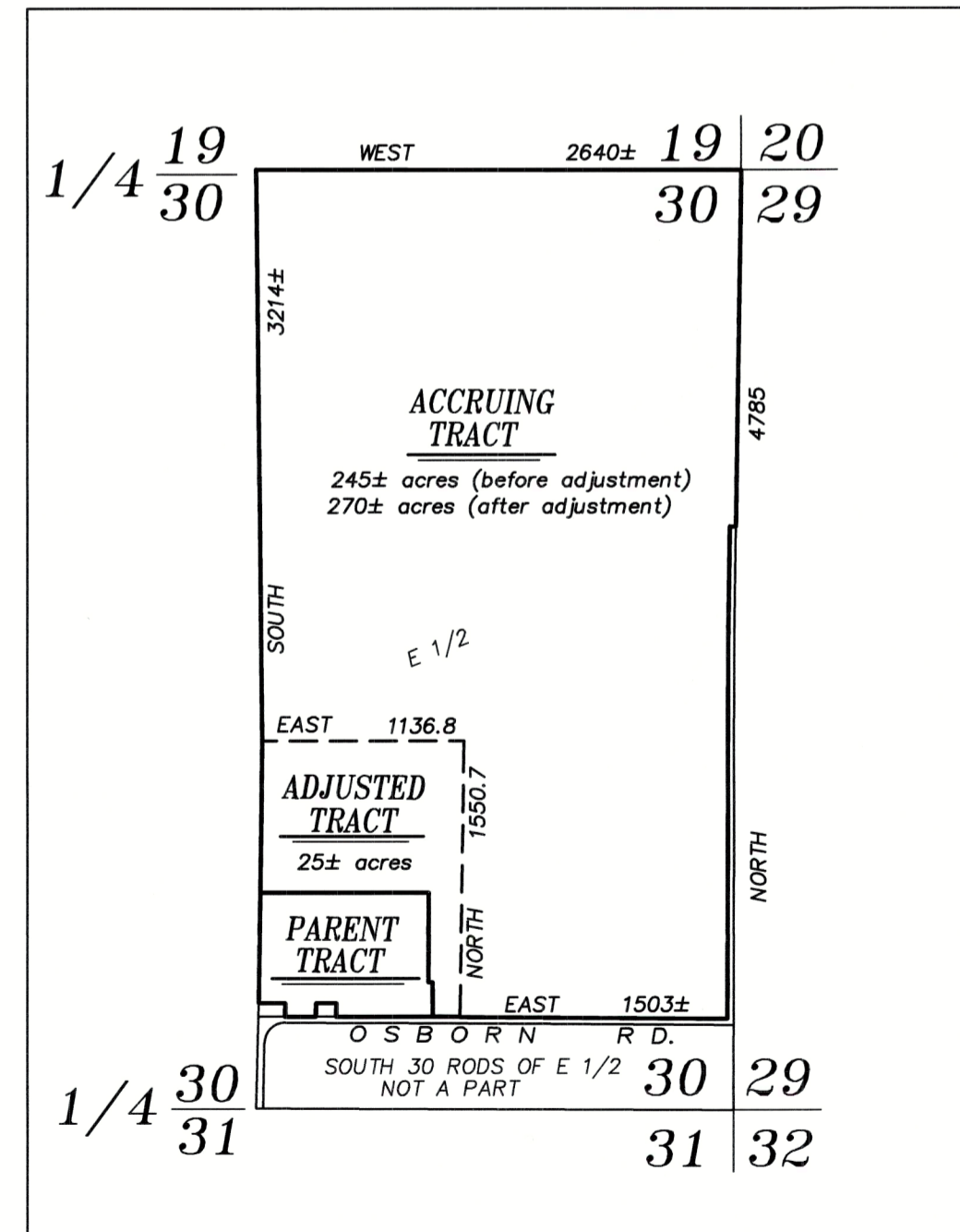
In conversation with the Baker County Roadmaster, he indicated a 35 foot right of way for Osborn Road along the East/West running portion of the road. I find fences to reflect this width.

I place the adjusted line at the direction of Mr. Anderson. Acreage shown hereon is based on the approximate lines. I find no other unusual conditions with this survey.

### REFERENCE MATERIAL

Survey Number 9-40-36

DEED REFERENCES  
16 44 0185  
16 44 0188



**OVERALL VIEW**  
**SCALE: 1" = 1000'**

REGISTERED  
PROFESSIONAL  
LAND SURVEYOR

OREGON  
JUNE 2, 2010  
JEFFREY S. HSU  
83571

Renewal Date: June 30, 2023.

<b>BAGETT, GRIFFITH &amp; BLACKMAN</b>			
2006 Adams Avenue, LaGrande, Oregon			
Map of Survey			
Sited in Section 30, Township 8 South, Range 40 East of the Willamette Meridian			
BAKER COUNTY, OREGON			
SURVEYED FOR	Roy Anderson		
SURVEYED BY	J. S. H.		
Scale: 1" = 200'	Drawn by: J. S. H.	Oct. 2021	

1/4 30  
31  
Measurements to the most Easterly fence corner on the West side of Osborn Rd. APPROXIMATE position of South 1/4 cor. of Section 30. SEE NARRATIVE

1/4 31  
6  
Found 1 1/2" iron pipe, accepted as 1/4 cor. by Survey Number 09-40-36  
44°49'04.3015"N  
117°51'37.5986"W

FILED November 17 2021  
BAKER COUNTY SURVEYOR  
SURVEY NO. 8-40-46