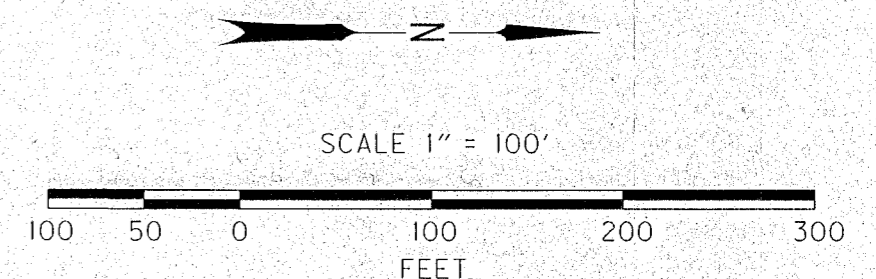


SE 1/4 SECTION 13 T8S R40E WM
 NE 1/4 SECTION 24 T8S R40E WM

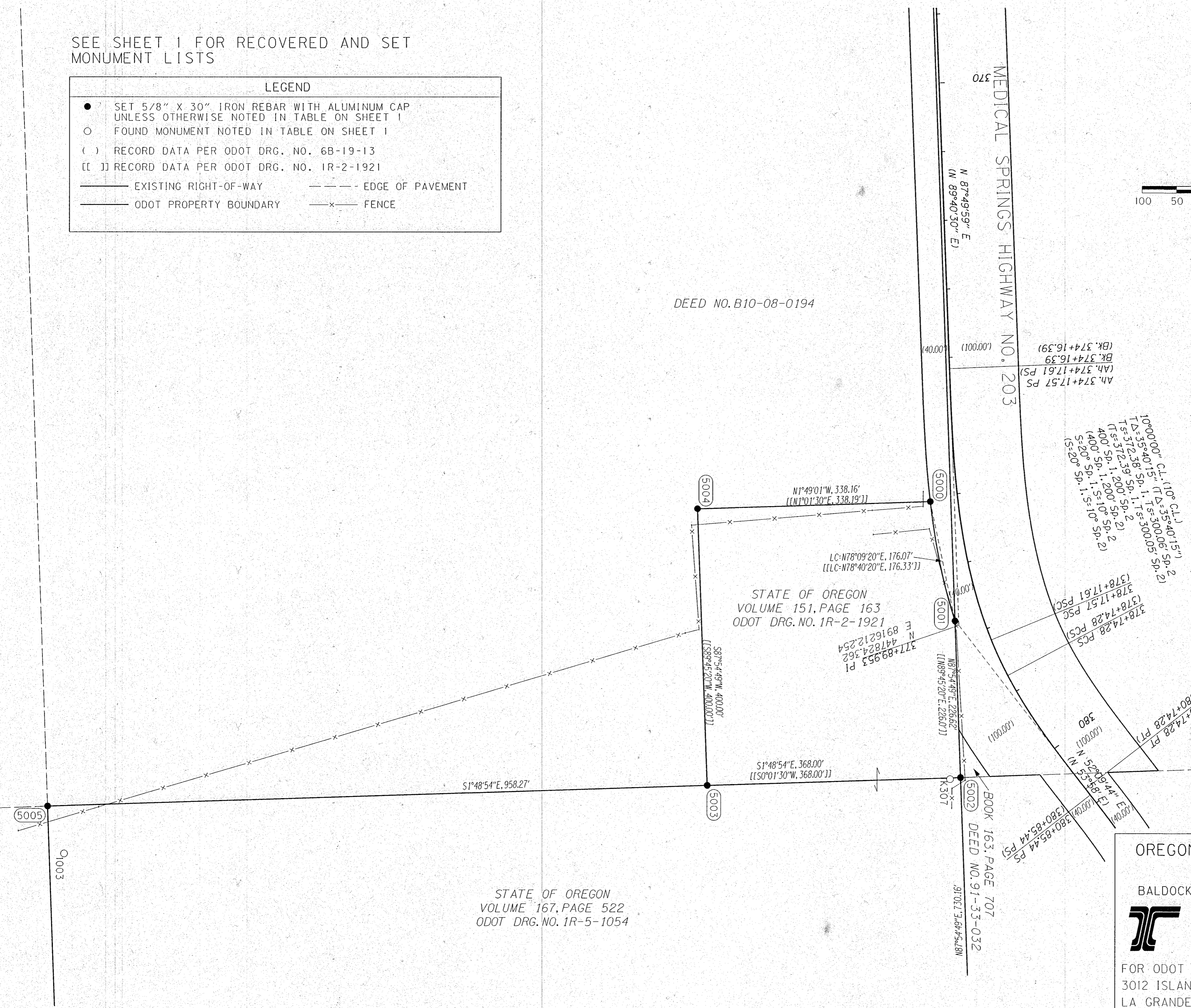
SEE SHEET 1 FOR RECOVERED AND SET
 MONUMENT LISTS

LEGEND	
●	SET 5/8" X 30" IRON REBAR WITH ALUMINUM CAP UNLESS OTHERWISE NOTED IN TABLE ON SHEET 1
○	FOUND MONUMENT NOTED IN TABLE ON SHEET 1
()	RECORD DATA PER ODOT DRG. NO. 6B-19-13
[]	RECORD DATA PER ODOT DRG. NO. 1R-2-1921
—	EXISTING RIGHT-OF-WAY
- - -	EDGE OF PAVEMENT
—	ODOT PROPERTY BOUNDARY
- x -	FENCE



DEED NO. B10-08-0194

MEDICAL SPRINGS HIGHWAY NO. 203



STATE OF OREGON
 VOLUME 151, PAGE 163
 ODOT DRG. NO. 1R-2-1921

STATE OF OREGON
 VOLUME 167, PAGE 522
 ODOT DRG. NO. 1R-5-1054

Ah. 374+17.57 PS
 Bk. 374+16.39
 (BK. 374+16.39)

10°00'00" CL (10° Ch.)
 TD=35°40'15" (TD=35°40'15")
 TS=372.38 Sp. 1.15=300.05' Sp. 2)
 TS=372.39 Sp. Sp. 2
 TS=372.39 Sp. Sp. 2
 400' Sp. 1.200' Sp. 2
 400' Sp. 1.5=10' Sp. 2
 S=20' Sp. 1.5=10' Sp. 2

378+17.57 PSC
 378+17.57 PSC
 378+17.57 PSC

380+85.44 PS
 380+85.44 PS
 380+85.44 PS

380+85.44 PS
 380+85.44 PS
 380+85.44 PS

380+85.44 PS
 380+85.44 PS
 380+85.44 PS

380+85.44 PS
 380+85.44 PS
 380+85.44 PS

380+85.44 PS
 380+85.44 PS
 380+85.44 PS

380+85.44 PS
 380+85.44 PS
 380+85.44 PS

REGISTERED
 PROFESSIONAL
 LAND SURVEYOR

Bret N. Elithorp

OREGON
 JAN. 14, 2003
 BRET N. ELITHORP
 63148

RENEWAL: DEC. 31, 2015
 SIGNED: 1/13/15

FILED Jan. 14 2015
 BAKER COUNTY SURVEYOR
 SURVEY NO. 8-40-22

OREGON DEPARTMENT OF TRANSPORTATION
 BOUNDARY SURVEY
 BALDOCK SLOUGH EAST QUARRY AND STOCK PILE SITES
 MEDICAL SPRINGS HIGHWAY NO. 203
 BAKER COUNTY, OREGON



FOR ODOT REGION 5
 3012 ISLAND AVENUE
 LA GRANDE, OR 97850

JANUARY 13, 2015
 1"=100'
 SHEET 3 OF 4