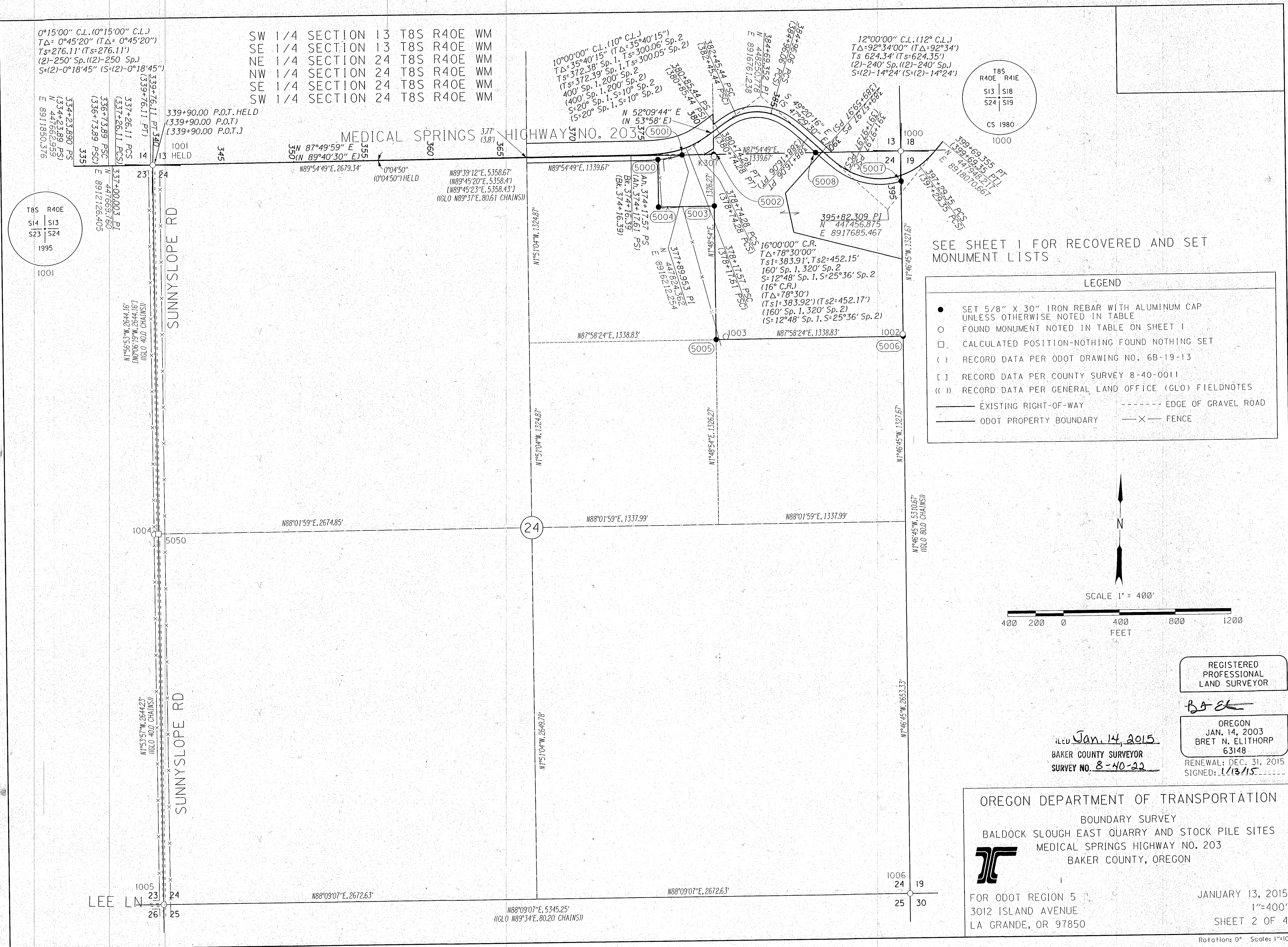
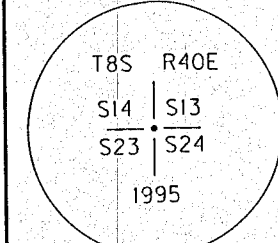
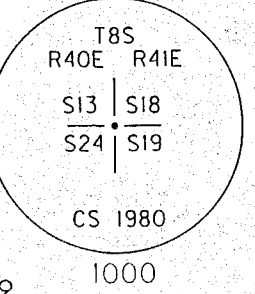


0°15'00" C.L. (0°15'00" C.L.)  
 TΔ= 0°45'20" (TΔ= 0°45'20")  
 Ts=276.11' (Ts=276.11')  
 (2)-250' Sp. (2)-250' Sp.)  
 S=(2)-0°18'45" (S=(2)-0°18'45")

SW 1/4 SECTION 13 T8S R40E WM  
 SE 1/4 SECTION 13 T8S R40E WM  
 NE 1/4 SECTION 24 T8S R40E WM  
 NW 1/4 SECTION 24 T8S R40E WM  
 SE 1/4 SECTION 24 T8S R40E WM  
 SW 1/4 SECTION 24 T8S R40E WM

10°00'00" C.L. (10° C.L.)  
 TΔ=35°40'15" (TΔ=35°40'15")  
 Ts=372.39' Sp. 1, Ts=300.06' Sp. 2  
 (Ts=372.39' Sp. 1, Ts=300.06' Sp. 2)  
 (400' Sp. 1, 200' Sp. 2)  
 S=20° Sp. 1, S=10° Sp. 2  
 (S=20° Sp. 1, S=10° Sp. 2)

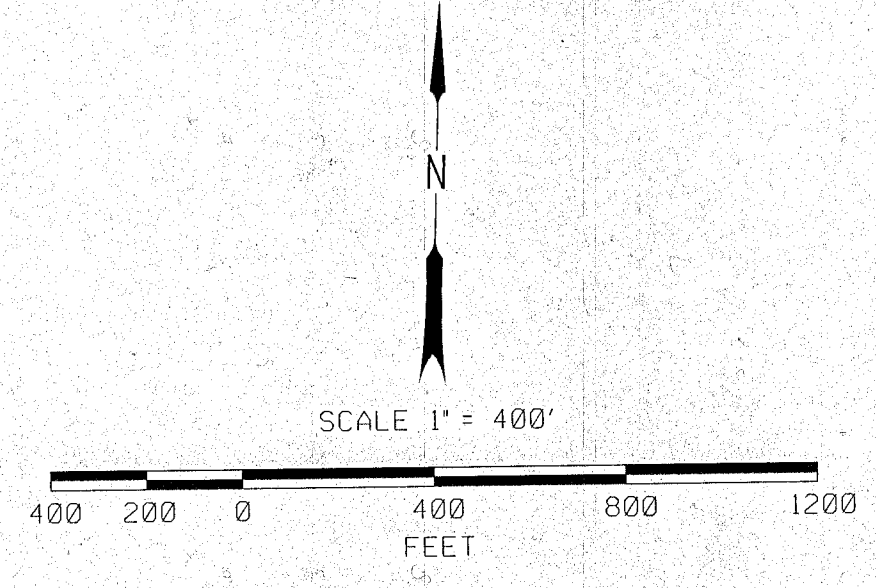
12°00'00" C.L. (12° C.L.)  
 TΔ=92°34'00" (TΔ=92°34')  
 Ts 624.34' (Ts=624.35')  
 (2)-240' Sp. (2)-240' Sp.)  
 S=(2)-14°24' (S=(2)-14°24')



SEE SHEET 1 FOR RECOVERED AND SET MONUMENT LISTS

**LEGEND**

- SET 5/8" X 30" IRON REBAR WITH ALUMINUM CAP UNLESS OTHERWISE NOTED IN TABLE
- FOUND MONUMENT NOTED IN TABLE ON SHEET 1
- CALCULATED POSITION-NOTHING FOUND NOTHING SET
- ( ) RECORD DATA PER ODOT DRAWING NO. 6B-19-13
- [ ] RECORD DATA PER COUNTY SURVEY 8-40-0011
- ( ( ) RECORD DATA PER GENERAL LAND OFFICE (GLO) FIELDNOTES
- EXISTING RIGHT-OF-WAY
- EDGE OF GRAVEL ROAD
- ODOT PROPERTY BOUNDARY
- X— FENCE



REGISTERED PROFESSIONAL LAND SURVEYOR


*Baker*

OREGON  
 JAN. 14, 2003  
 BRET N. ELITHORP  
 63148

FILED Jan. 14, 2015  
 BAKER COUNTY SURVEYOR  
 SURVEY NO. 8-40-22

RENEWAL: DEC. 31, 2015  
 SIGNED: 1/13/15

OREGON DEPARTMENT OF TRANSPORTATION  
 BOUNDARY SURVEY  
 BALDOCK SLOUGH EAST QUARRY AND STOCK PILE SITES  
 MEDICAL SPRINGS HIGHWAY NO. 203  
 BAKER COUNTY, OREGON



FOR ODOT REGION 5  
 3012 ISLAND AVENUE  
 LA GRANDE, OR 97850

JANUARY 13, 2015  
 1"=400'  
 SHEET 2 OF 4