

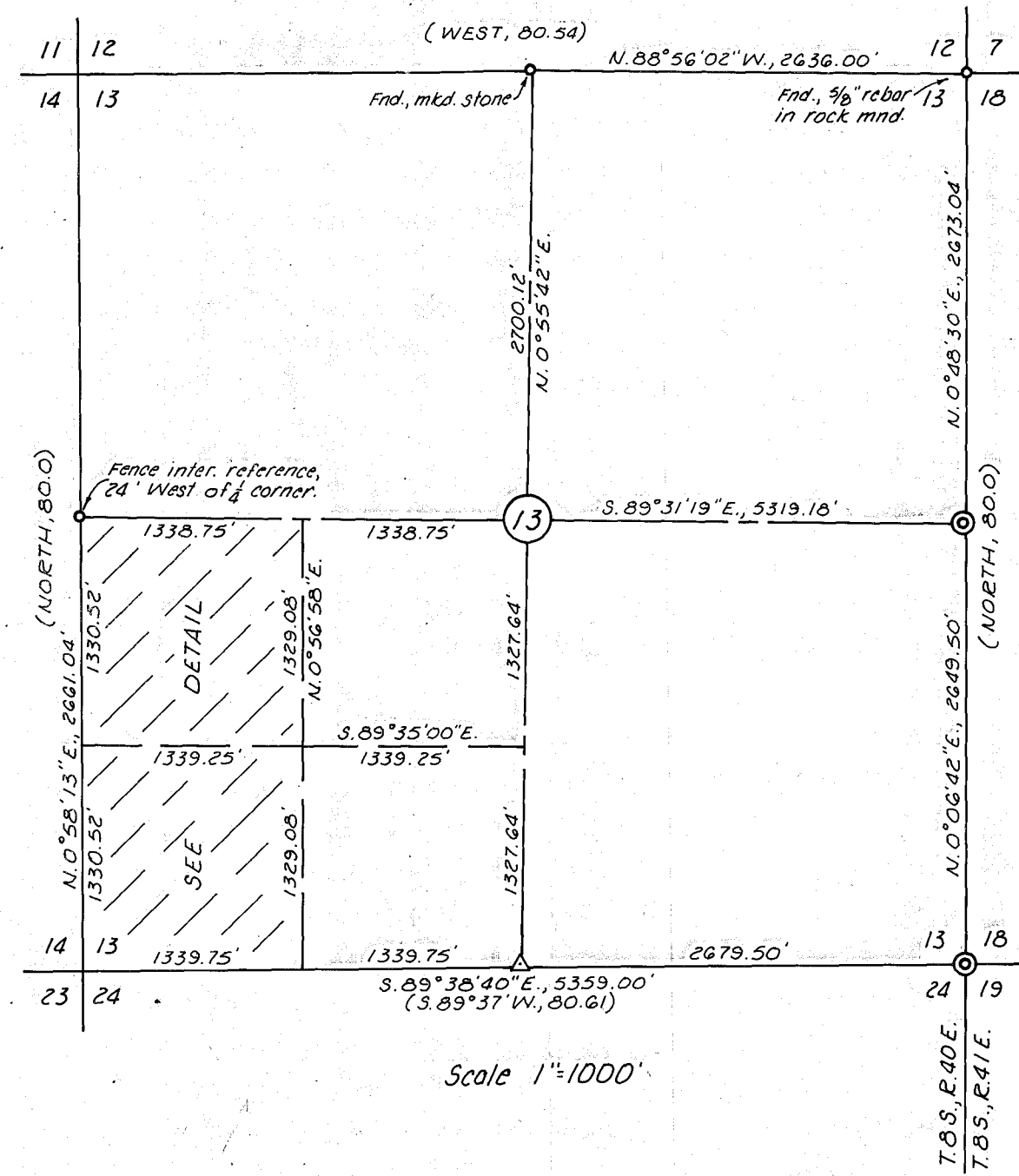
Meridian by solar observation.

**LEGEND**

- Found monument or reference as noted.
- ⊙ Found County Surveyor brass cap.
- Set 3/8" x 30" rebar with yellow plastic cap marked HANLEY ENGR PLS 1206
- ( ) Record of original GLO survey.
- △ Corner position by proportion - not monumented.

Reference Survey Nos. 8-40-3, -4, & -5.

NOTE: Southwest corner Section 13 reestablished at intersection of centerline Baker County - Sunnyslope Road to the South and centerline OSHD - Medical Springs highway.



DETAIL  
1"=300'

FILED Dec. 2, 1983  
BAKER COUNTY SURVEYOR  
SURVEY NO. 8-40-7

RECORD OF SURVEY PLAT  
THE W $\frac{1}{2}$ SW $\frac{1}{4}$  OF SECTION 13, T.8 S., R.40 E., W.M.  
Surveyed March 12 to 21, 1983 Scale as noted  
For Ray Schoppert

REGISTERED  
PROFESSIONAL  
LAND SURVEYOR

*James D. Hanley*

OREGON  
SEPTEMBER 23, 1977  
JAMES D. HANLEY  
1206