

Assumed the line along the west boundary of the NW 1/4 of section 25, T8S, R40E WM as having a bearing of due North

Found an iron pin 30 feet east of intersection, used intersection as Sec. Cor. common to Secs 23, 24 & 25, 26 T8S, R40E WM

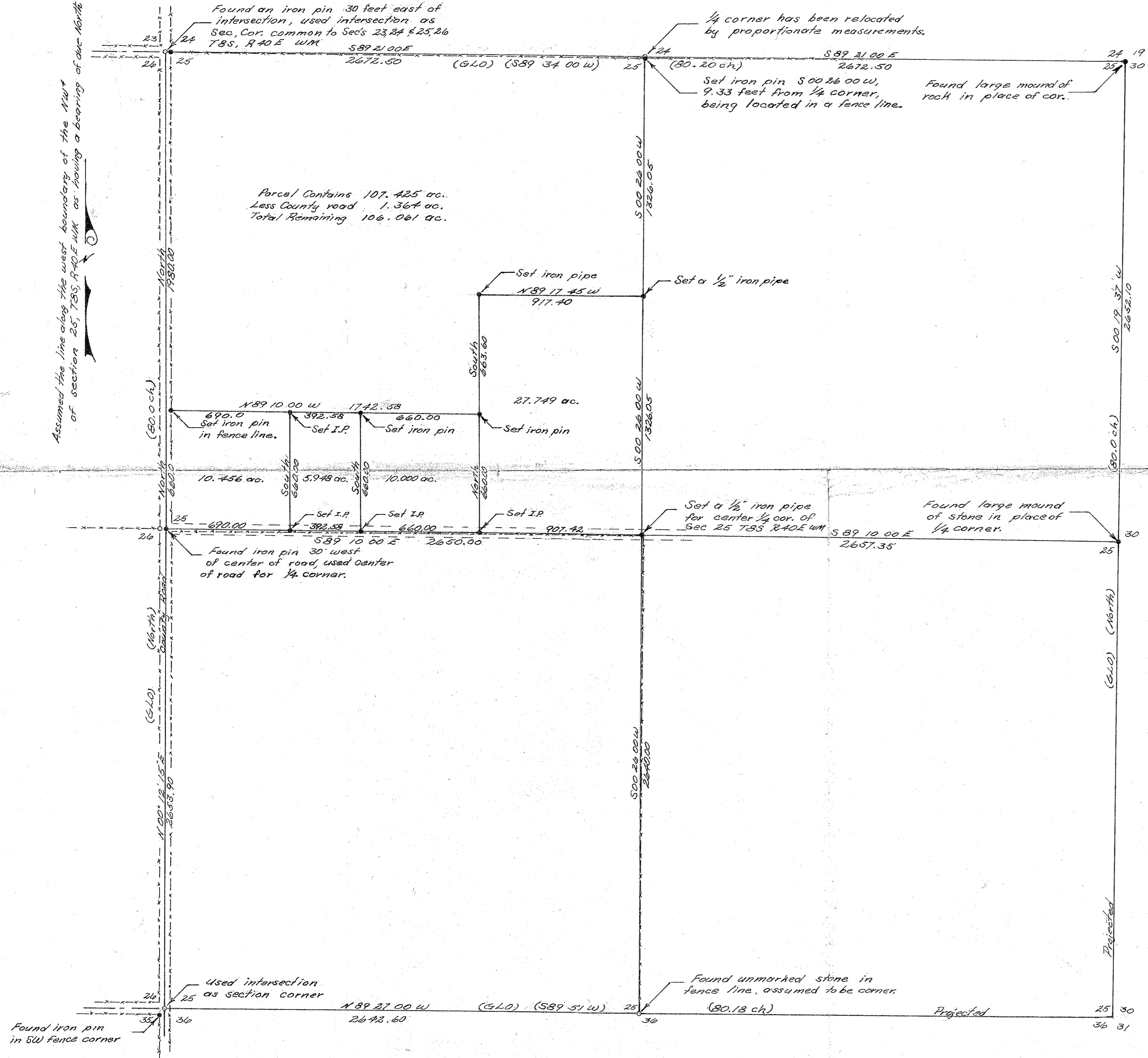
1/4 corner has been relocated by proportionate measurements.

Set iron pin S 00 26 00 W, 9.33 feet from 1/4 corner, being located in a fence line.

Found large mound of rock in place of cor.

Parcel Contains 107.425 ac.
Less County road 1.364 ac.
Total Remaining 106.061 ac.

SURVEY OF THE NW 1/4 SECTION 25, T8S, R40E WM.
Scale 1" = 400'
Date 9-14-70



REGISTERED
OREGON
LAND SURVEYOR
JAMES H. HAMBLETON
JULY 10, 1964
645

FILED March 28, 1973
BAKER COUNTY SURVEYOR
SURVEY NO. 8-40-2