

LEGEND

- Found 5/8" iron pin with 3" aluminum cap, set by Survey Number 7-39-83
- Found 1" iron pipe with 2 1/2" aluminum cap, set by Survey Number 7-40-02
- ⊙ Found monument as noted, marked as per Baker County Monumentation records
- ⊙ Set 5/8"x30" iron pin with 2 1/2" aluminum cap, marked BGB SURVEY MARKER, or as per Baker County Monumentation Records (No monumentation records on 1/64th corners)
- Set 5/8"x30" iron pin with plastic cap marked BGB SURVEY MARKER
- Ditch
- - - Fenceline
- () Record measurement as per Survey Number 7-39-83
- [] Record measurement as per Survey Number 7-40-3
- { } Record measurement as per field notes of GLO Contract Number 104, executed by Thompson and Chaplin
- - - Record measurement as per field notes of GLO Contract Number 102, executed by Davenport

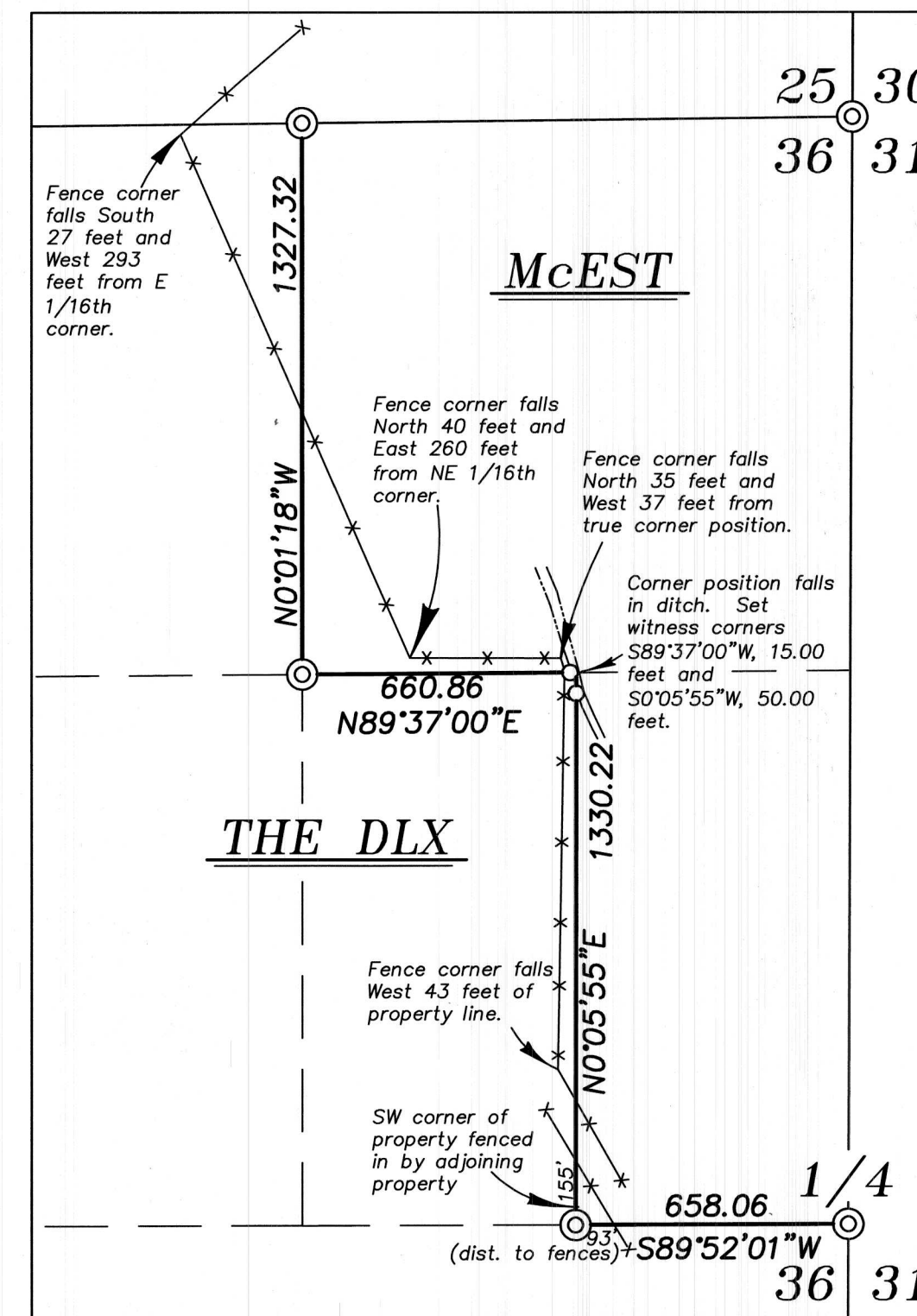
REFERENCE MATERIAL

- Survey Number 7-39-7
- Survey Number 7-39-82
- Survey Number 7-40-2
- Survey Number 7-40-3
- Survey Number 7-40-16
- Field Notes of GLO Contract No. 104, dated April 16, 1864, executed by David P. Thompson and Daniel Chaplin
- Field Notes of GLO Contract No. 102, dated July 20, 1863, executed by Timothy Davenport
- DEED REFERENCES**
- B06 42 0212
- B19 39 0211
- Book 65, Page 303
- Book 151, Page 7

BASIS OF BEARING

Solar observation taken at a point 3550 feet South and 3360 feet West of the Northeast corner of Section 22, Township 6 South, Range 39 East of the Willamette Meridian, as per Survey Number 7-40-16

SCALE: 1" = 1000'



DETAIL SCALE: 1" = 400'

NARRATIVE

This survey was done at the request of Bill Dolsen on behalf of McEst Ranches LLC. Mr. Dolsen wanted the ownership within Section 36 monumented. I recover the monuments as shown hereon. The Northwest corner of Section 36 was established by double proportion in Survey Number 7-39-83. I find the original GLO monument at the West quarter corner position of Section 36, which was not used in the aforementioned proportion. I find that a proportionate position places the NW Section corner approximately 5.6 feet to the South. I do not reset this monument, but use the newly calculated position to place the proportionate position of the North quarter corner. As was done in Survey 7-39-83, I rotate and scale the line between the Northeast corner of Section 25 and the true corner position at the Southeast corner of Section 36, as per record measurements of Survey Number 7-40-3, to place the NE corner of Section 36. This puts the corner position in a cultivated field, however, there appear to be remnants of embedded stone at this location. As there is little other stone in the area, I find this likely to be remnants of the stone mound called for in 7-40-3 and re-monument this position. At the South quarter corner, I find an embedded collar of stone approx. 3 ft. in diameter. I find the distances to adjacent corners to be consistent with the original GLO surveyor and therefore accept this as remnants of the original GLO corner. Section subdivision is done as per BLM Manual of Instructions 2009. I find no other unusual conditions with this survey.

REGISTERED
PROFESSIONAL
LAND SURVEYOR

OREGON
JUNE 2, 2010
JEFFREY S. HSU
83571

Renewal Date: June 30, 2021

FILED Nov. 6, 2019

BAKER COUNTY SURVEYOR

SURVEY NO. 7-39-95

8-39-17

7-40-19

BAGETT, GRIFFITH & BLACKMAN

2006 Adams Avenue, LaGrande, Oregon
Map of Survey

Situated in Sections 35 and 36, Township 7 South, Range 39 East of the Willamette Meridian

BAKER COUNTY, OREGON

SURVEYED FOR McEst Ranches, LLC

SURVEYED BY J. S. H.

Scale: 1" = 1000' Drawn by: J. S. H. Oct. 2019