

B15 06 0094

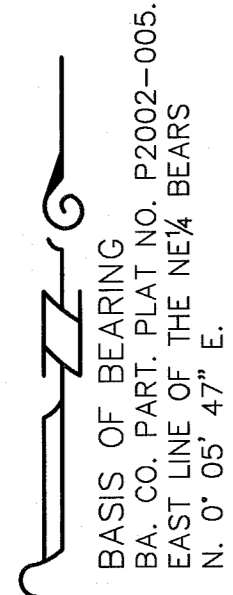
B15 06 0095

B15 06 0096

HANLEY ENGINEERING, INC.

P.O. BOX 701, 2043 MAIN STREET, BAKER CITY, OREGON 97814 (541) 523-3803

Deer Valley Estates SD2015-001 In the NE 1/4 of Sec. 29, T. 8 S., R. 39 E., W.M.



SCALE: 1" = 200'

LEGEND

- Set 5/8" rebar with plastic cap marked "HANLEY ENGR. PLS 1817".
 - Found, 5/8" rebar with plastic cap marked "HANLEY ENGR. PLS 1817", set by Ba. Co. Part. Plat No. P2002-005.
 - ◇ Found, existing rebar from P2003-009, driven down.
 - Found, rebar from P2003-009
 - () Record Data Per Part. Plat No. P2002-005.
 - { } Record Data Per Ba. Co. Deed No. 77 13 081.
 - Found, rebar from Sur. No. 8-39-44.
- All other shown survey data from Part. Plat No. P2003-009

NORTH 1/4 CORNER SECTION 29

FOUND 1/2" REBAR PER SUR. NO. 8-39-7.

FOUND 5/8" REBAR SET BY BA. CO. SUR. NO. 8-39-44 0.22' SOUTH & 0.17' EAST OF TRUE CORNER POSITION.

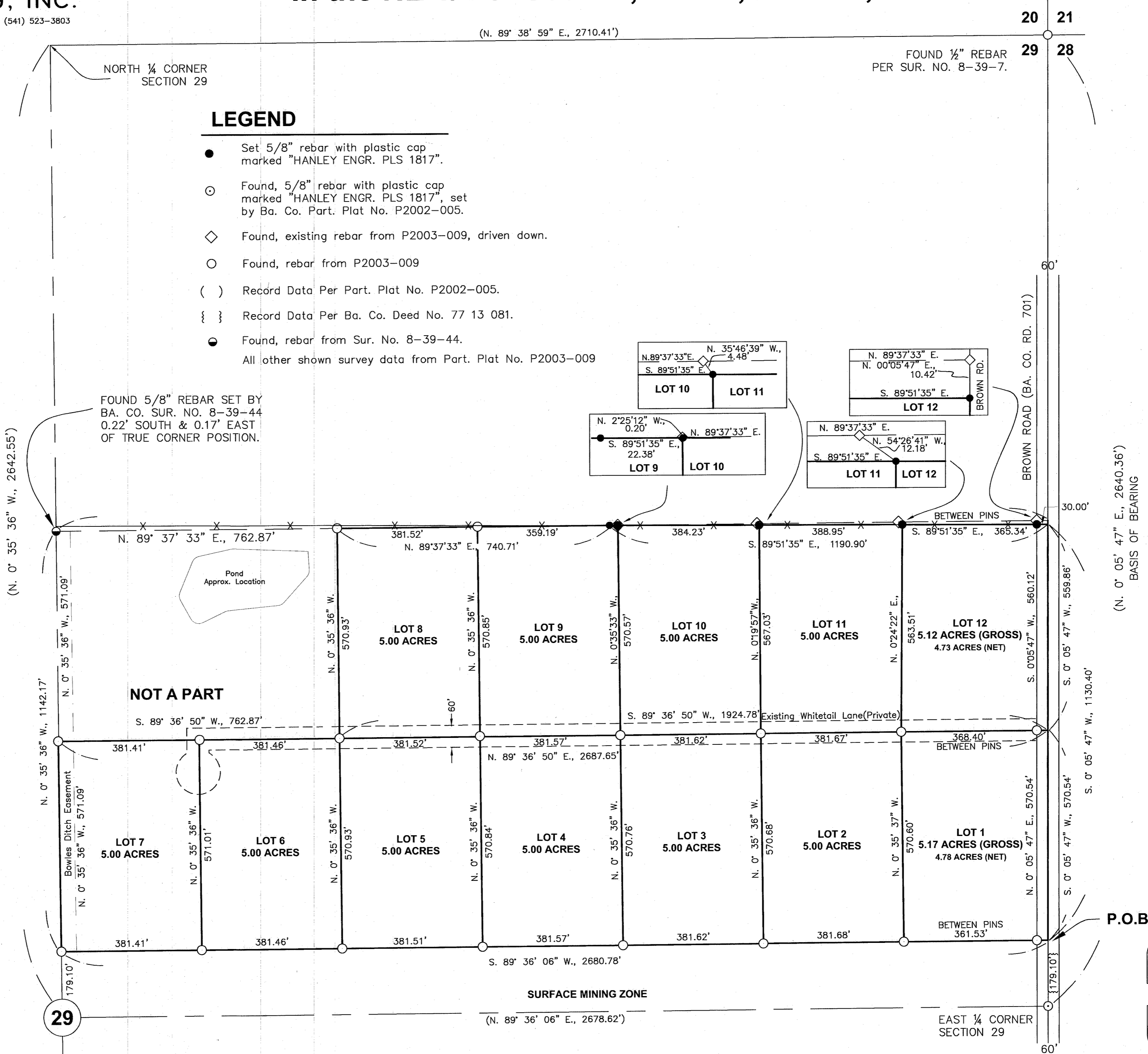
NOTE

Sewage disposal shall be provided by a DEQ approved sanitary sewage disposal system for each parcel.

I, Thomas J. Hanley, hereby certify that this is an exact duplicate copy of the subdivision plat as submitted to the Baker County Clerk for recording.

Thomas J. Hanley
Thomas J. Hanley

HANLEY ENGINEERING, INC.
2043 MAIN STREET
BAKER CITY, OREGON



29

P.O.B.

REGISTERED PROFESSIONAL LAND SURVEYOR

Thomas J. Hanley
OREGON
JULY 13, 1979
THOMAS J. HANLEY
1817

Renews June 30, 2015

FILED Feb. 10, 2015
BAKER COUNTY SURVEYOR
SURVEY NO. 8-39-119