

B15 06 0094

B15 06 0095

B15 06 0096

# HANLEY ENGINEERING, INC.

P.O. BOX 701, 2043 MAIN STREET, BAKER CITY, OREGON 97814 (541) 523-3803

## Deer Valley Estates SD2015 In the NE 1/4 of Sec. 29, T. 8 S., R. 39 E., W.M.

BASIS OF BEARING  
BA. CO. PART. PLAT NO. P2002-005.  
EAST LINE OF THE NE 1/4 BEARS  
N. 0° 05' 47" E.

SCALE: 1" = 200'

### LEGEND

- Set 5/8" rebar with plastic cap marked "HANLEY ENGR. PLS 1817".
  - Found, 5/8" rebar with plastic cap marked "HANLEY ENGR. PLS 1817", set by Ba. Co. Part. Plat No. P2002-005.
  - ◇ Found, existing rebar from P2003-009, driven down.
  - Found, rebar from P2003-009
  - ( ) Record Data Per Part. Plat No. P2002-005.
  - { } Record Data Per Ba. Co. Deed No. 77 13 081.
  - Found, rebar from Sur. No. 8-39-44.
- All other shown survey data from Part. Plat No. P2003-009

FOUND 5/8" REBAR SET BY  
BA. CO. SUR. NO. 8-39-44  
0.22' SOUTH & 0.17' EAST  
OF TRUE CORNER POSITION.

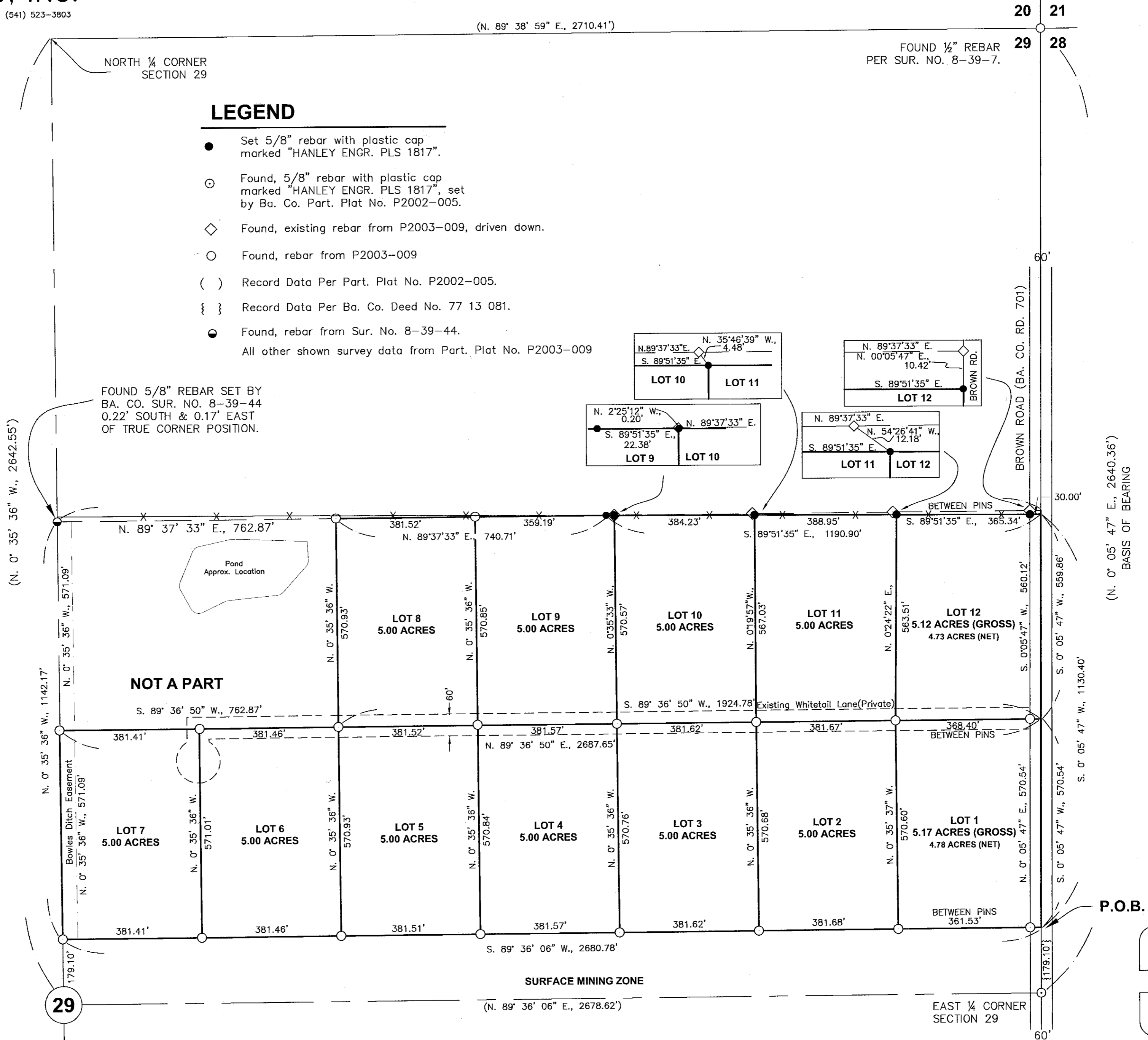
### NOTE

Sewage disposal shall be provided by a DEQ approved sanitary sewage disposal system for each parcel.

I, Thomas J. Hanley, hereby certify that this is an exact duplicate copy of the subdivision plat as submitted to the Baker County Clerk for recording.

*Thomas J. Hanley*  
Thomas J. Hanley

HANLEY ENGINEERING, INC.  
2043 MAIN STREET  
BAKER CITY, OREGON



P.O.B.

REGISTERED  
PROFESSIONAL  
LAND SURVEYOR

*Thomas J. Hanley*  
OREGON  
JULY 13, 1979  
THOMAS J. HANLEY  
1817

Renews June 30, 2015

FILED Feb. 10, 2015  
BAKER COUNTY SURVEYOR  
SURVEY NO. 8-39-119