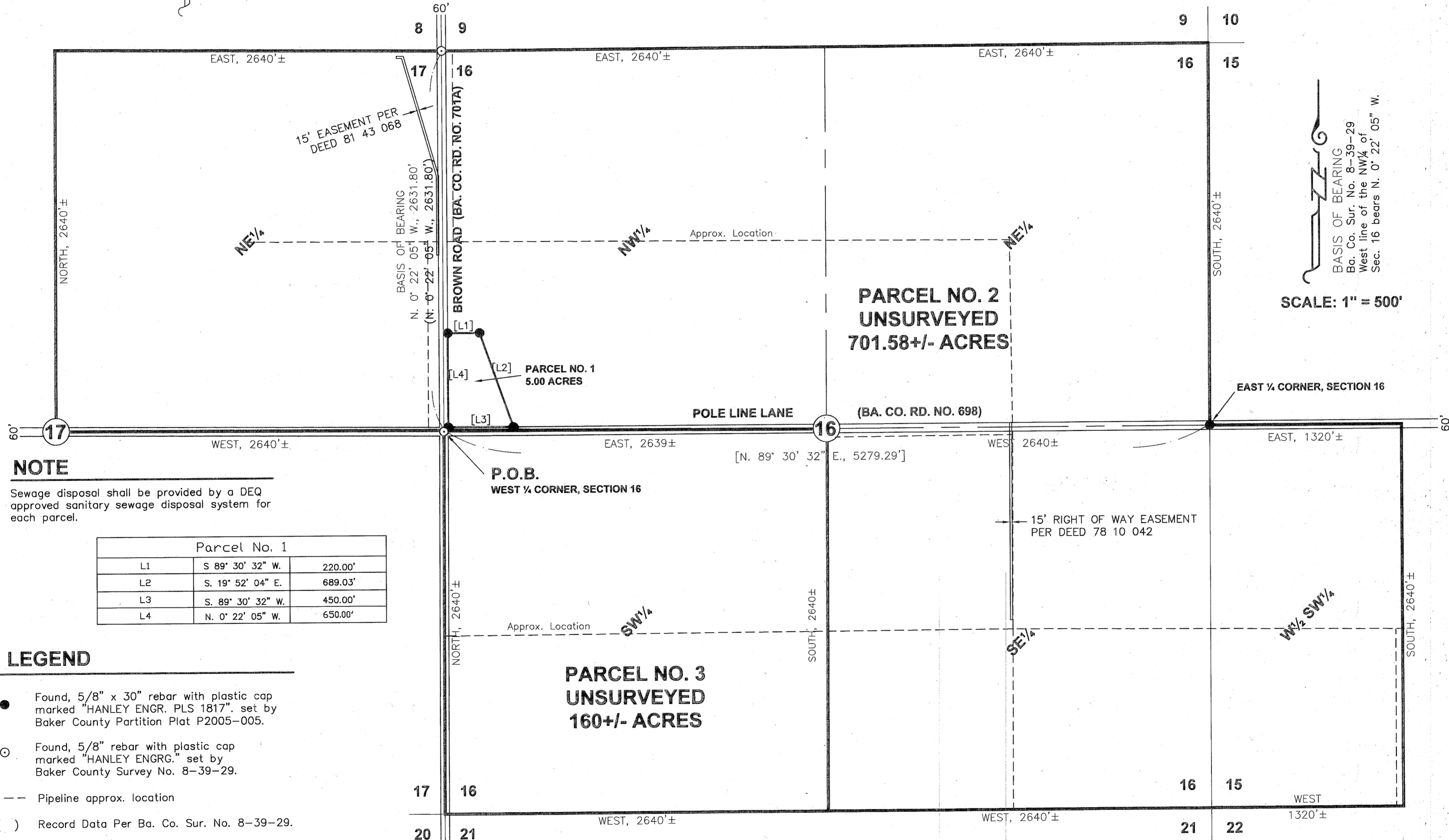


HANLEY ENGINEERING, INC.
 P.O. BOX 701, 2043 MAIN STREET, BAKER CITY, OREGON 97814 (541) 523-3803

REPLAT NO. P2012-007

**REPLAT OF UNSURVEYED PARCEL TWO OF PARTITION PLAT NO. P2005-005.
 LAND LOCATED IN SECTIONS 15, 16, 17, T. 8 S., R. 39 E.,
 WILLAMETTE MERIDIAN, BAKER COUNTY, OREGON.
 OCT. 15, 2012**

T. 8 S., R. 39 E., W.M.



NOTE

Sewage disposal shall be provided by a DEQ approved sanitary sewage disposal system for each parcel.

Parcel No. 1		
L1	S 89° 30' 32" W.	220.00'
L2	S. 19° 52' 04" E.	689.03'
L3	S. 89° 30' 32" W.	450.00'
L4	N. 0° 22' 05" W.	650.00'

LEGEND

- Found, 5/8" x 30" rebar with plastic cap marked "HANLEY ENGR. PLS 1817". set by Baker County Partition Plat P2005-005.
- Found, 5/8" rebar with plastic cap marked "HANLEY ENGR." set by Baker County Survey No. 8-39-29.
- Pipeline approx. location
- () Record Data Per Ba. Co. Sur. No. 8-39-29.
- [] Record Data Per Ba. Co. Partition Plat No. P2005-005.

I, Thomas J. Hanley, hereby certify that this is an exact duplicate copy of the replat as submitted to the Baker County Clerk for recording.

Thomas J. Hanley
 Thomas J. Hanley

STATEMENT OF WATER RIGHTS

The following water rights are appurtenant to this partition plat:

81123	Primary
T-9613	Primary
52712	Supplemental
52848	Supplemental
52849	Supplemental
T-10134	Supplemental

REFERENCES

- Baker County Partition Plat No. P2005-05
- Baker County Survey No. 8 39 29
- Baker County Deed Bk. 60 Pg. 522
- Baker County Deed No. 78 10 042
- Baker County Deed No. 79 30 179
- Baker County Deed No. 81 43 068
- Baker County Deed No. 85 03 065
- Baker County Deed No. B05 13 0062
- Baker County Deed No. B05 29 0382
- Baker County Deed No. B05 29 0386
- Baker County Deed No. B05 29 0374
- Baker County Deed No. B05 50 0317
- Baker County Staff Report: RP-12-001
- Elkhorn Title Company Report: File No. 00019910

REGISTERED PROFESSIONAL LAND SURVEYOR

Thomas J. Hanley
 OREGON
 JULY 13, 1979
 THOMAS J. HANLEY
 1817

Renews June 30, 2013

FILED Oct. 25, 2012
 BAKER COUNTY SURVEYOR
 SURVEY NO. 8-39-116