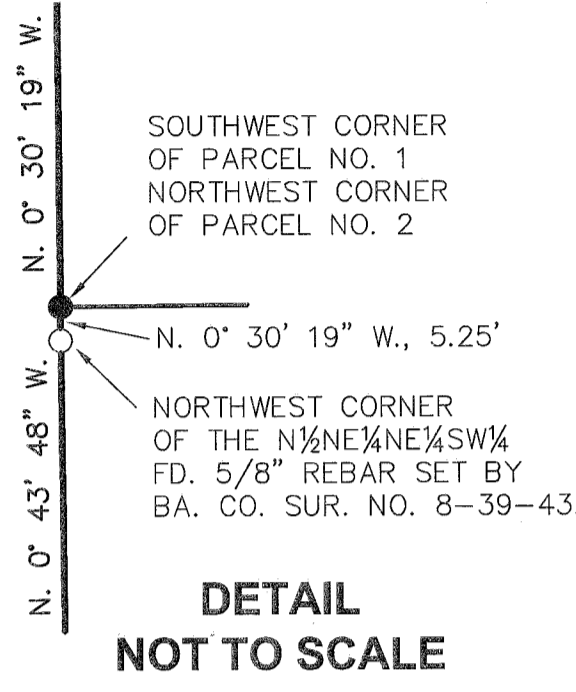
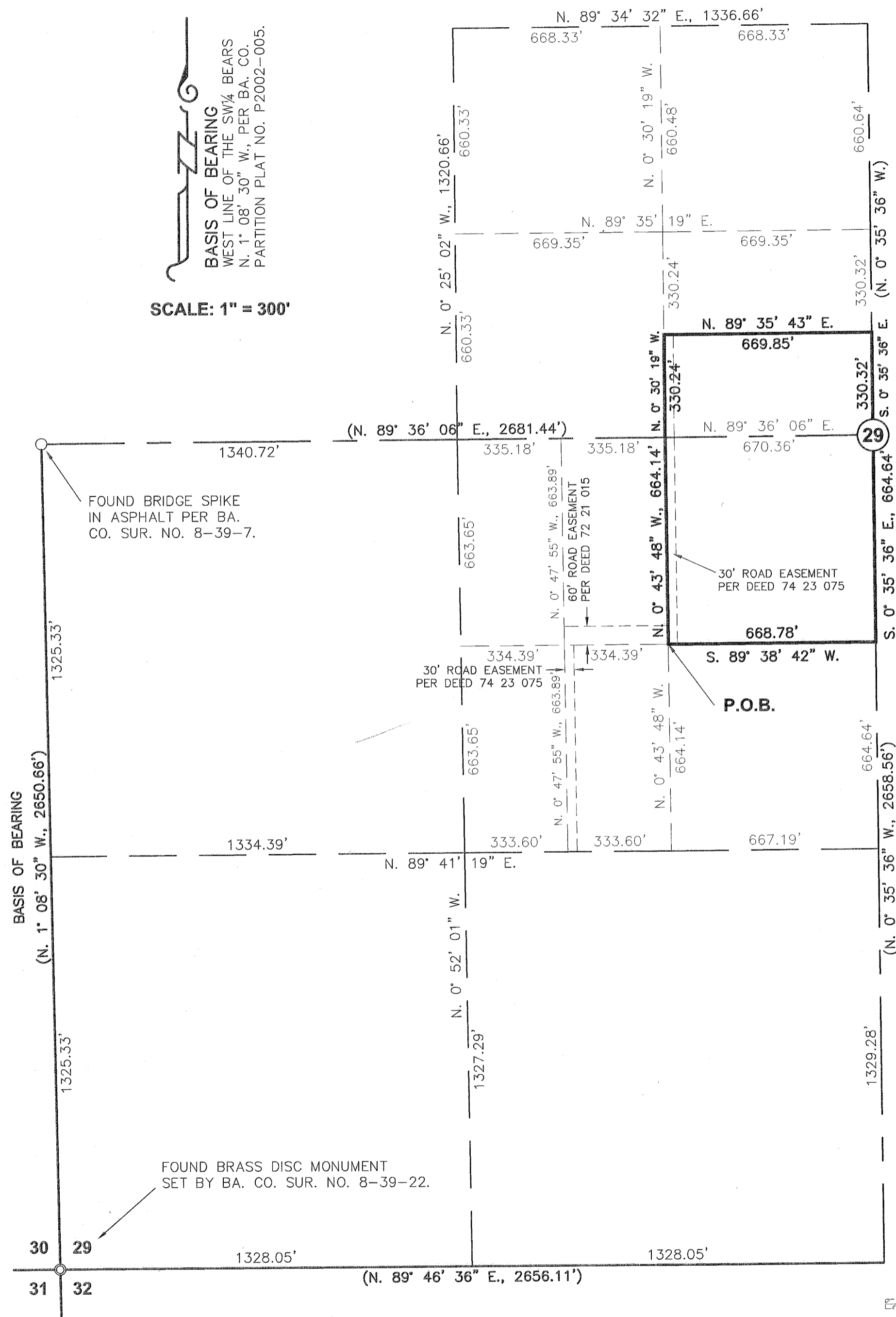


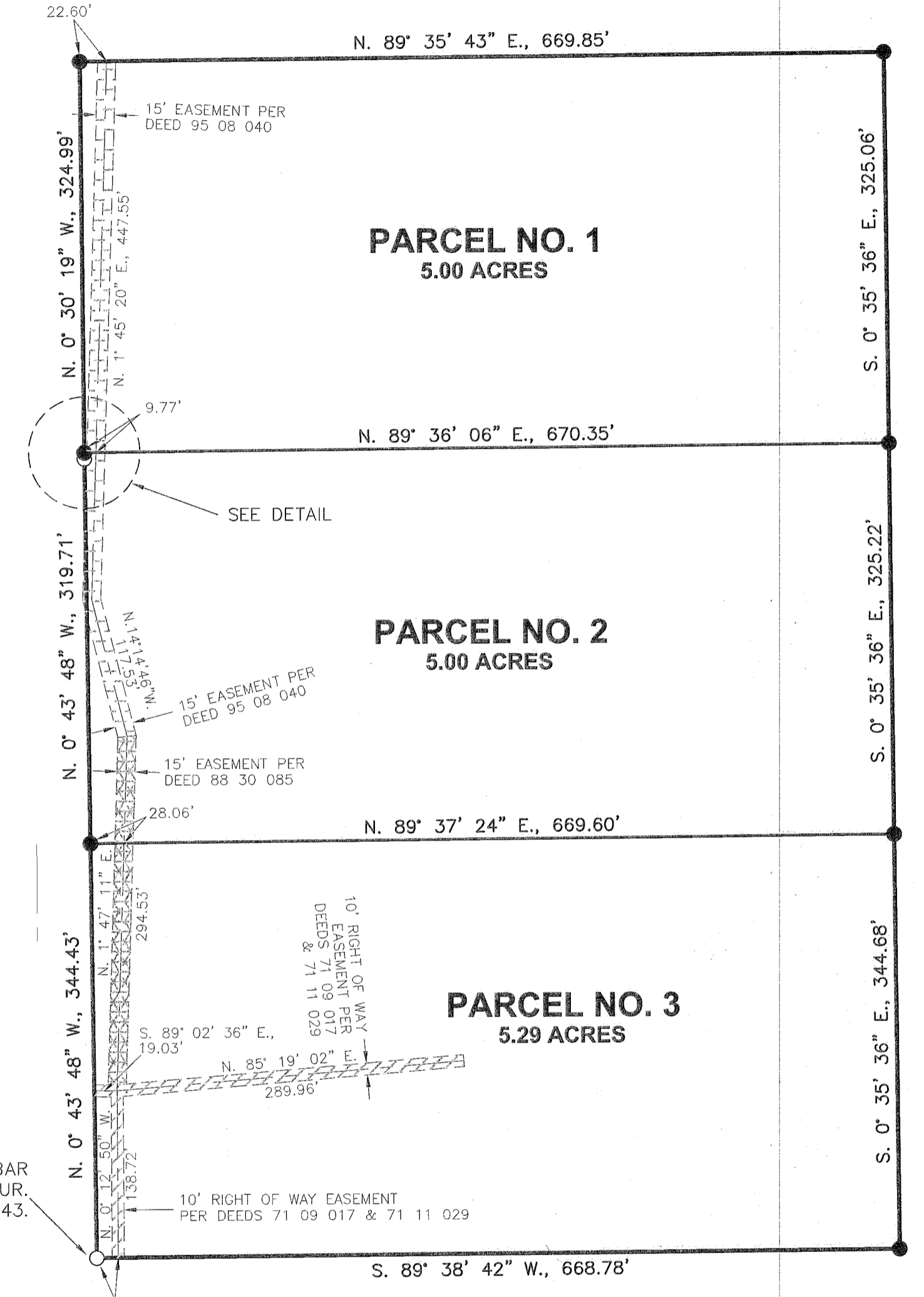
PARTITION PLAT NO. P2005-003

BASIS OF BEARING
WEST LINE OF THE SW¼ BEARS
N. 1° 08' 30" W., PER BA. CO.
PARTITION PLAT NO. P2002-005.

SCALE: 1" = 300'



DETAIL
NOT TO SCALE



SCALE: 1" = 100'

LEGEND

- Set 5/8" rebar with plastic cap marked "HANLEY ENGR. PLS 1817".
- Found, monument as noted.
- ⊙ Found, brass cap monument as noted.
- () Record data per Ba. Co. Part. Plat No. P2002-005.
- ▨ Easement per Deeds 71 09 017 & 71 11 029.
- ▩ Easement per Deed 88 30 085.
- ▧ Easement per Deed 95 08 040.

I, Thomas J. Hanley, hereby certify that this is an exact duplicate copy of the partition plat as submitted to the Baker County Clerk for recording.

Thomas J. Hanley
Thomas J. Hanley

REGISTERED
PROFESSIONAL
LAND SURVEYOR
THOMAS J. HANLEY
1817

FILED MARCH 10, 2005
BAKER COUNTY SURVEYOR
SURVEY NO. 8-39-96MP

Renews June 30, 2005

HANLEY ENGINEERING, INC.
2043 MAIN STREET
BAKER CITY, OREGON