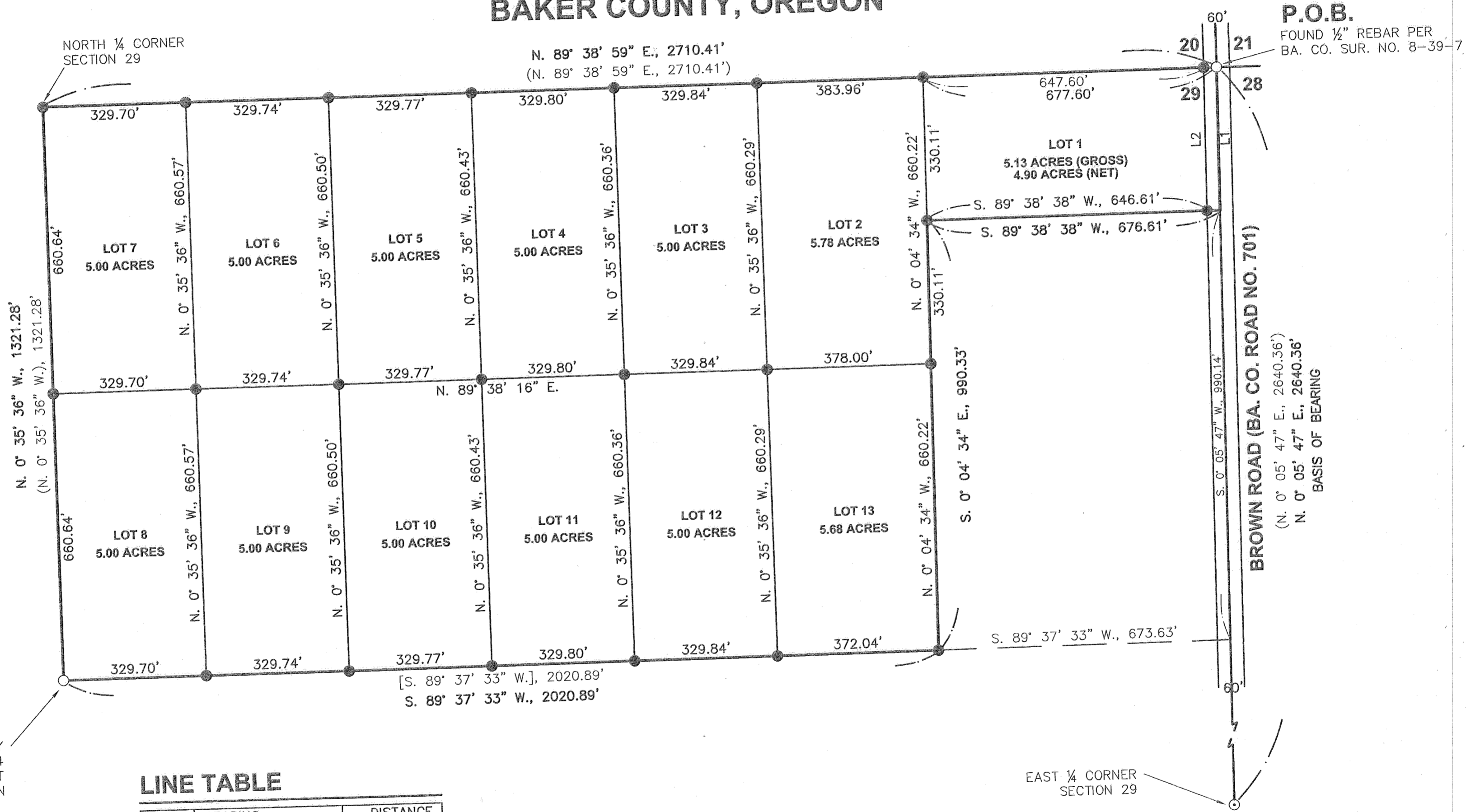


HIGH COUNTRY ESTATES

LOCATED IN THE
NORTH HALF OF THE NORTHEAST QUARTER OF SECTION 29,
TOWNSHIP 8 SOUTH, RANGE 39 EAST, WILLAMETTE MERIDIAN
BAKER COUNTY, OREGON



P.O.B.
FOUND 1/2" REBAR PER
BA. CO. SUR. NO. 8-39-7

BASIS OF BEARING
Ba. Co. Part. Plat No. P2002-005
East line of the NE 1/4, Sec. 29
bears N. 0° 05' 47" E.

SCALE: 1" = 200'

FOUND 5/8" REBAR SET BY
BA. CO. SUR. NO. 8-39-44
0.22' SOUTH & 0.17' EAST
OF TRUE CORNER POSITION

LINE TABLE

LINE	BEARING	DISTANCE
L1	S. 0° 05' 47" W.	330.05'
L2	S. 0° 05' 47" W.	330.05'

LEGEND

- Set 5/8" x 30" rebar with plastic cap marked "HANLEY ENGR. PLS 1817".
- Found, 5/8" rebar with plastic cap marked "HANLEY ENGR. PLS 1206", set by Ba. Co. Partition Plat No. P2002-005.
- Found, monument as noted.
- () Record Data Per Ba. Co. Partition Plat No. P2002-005.
- [] Record Data Per Ba. Co. Partition Plat No. P2003-009.

HANLEY ENGINEERING, INC.

P.O. BOX 701, 2043 MAIN STREET, BAKER CITY, OREGON 97814 (541) 523-3803

I, Thomas J. Hanley, hereby certify that this is an exact duplicate copy of the High Country Estates Subdivision Plat as submitted to the Baker County Clerk for recording.

Thomas J. Hanley
Thomas J. Hanley

REGISTERED
PROFESSIONAL
LAND SURVEYOR

Thomas J. Hanley
OREGON
JULY 13, 1979
THOMAS J. HANLEY
1817

FILED August 30, 2004
BAKER COUNTY SURVEYOR
SURVEY NO. 8-39-92SD
Renews June 30, 2005