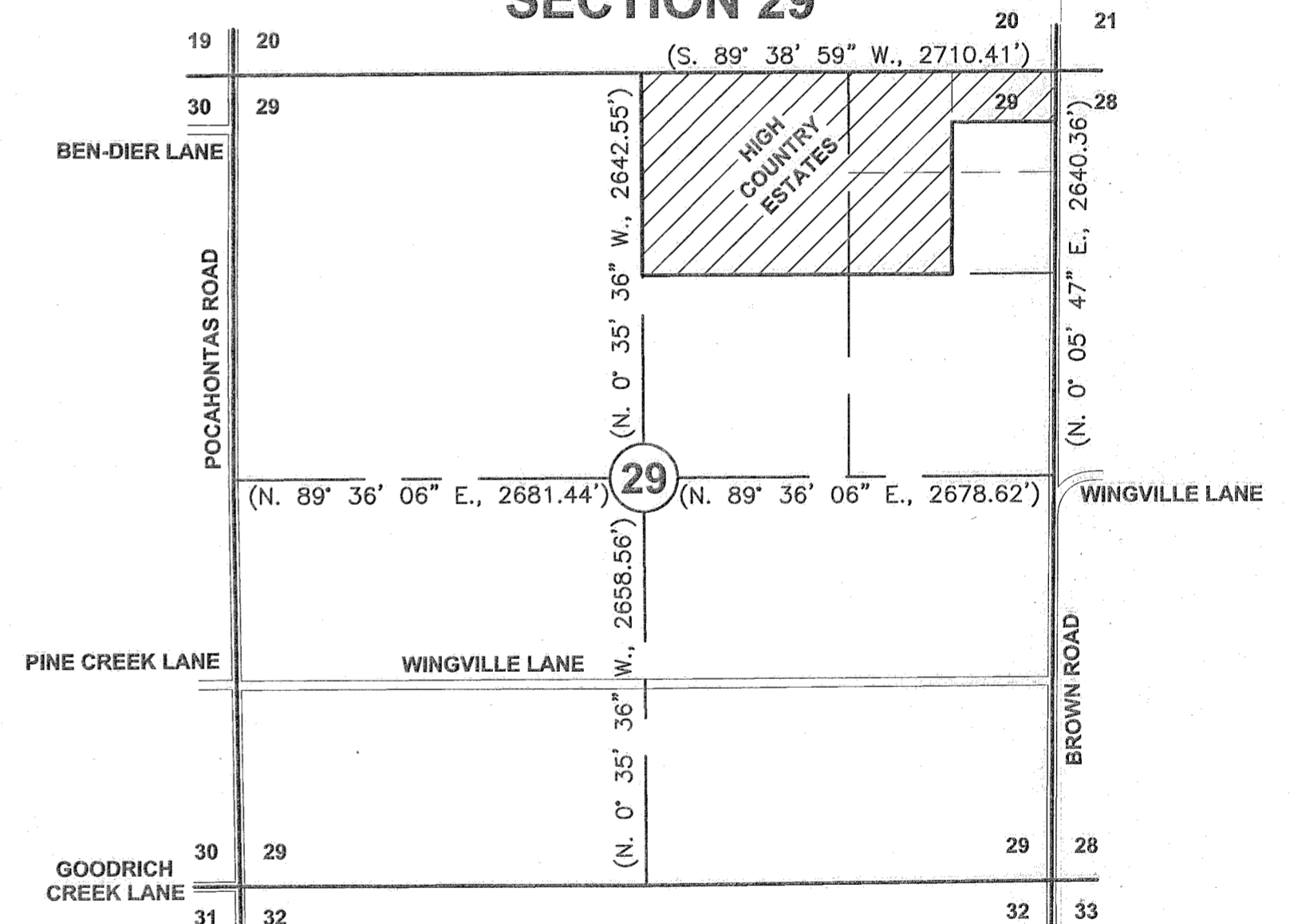


HIGH COUNTRY ESTATES

LOCATED IN THE
NORTH HALF OF THE NORTHEAST QUARTER OF SECTION 29,
TOWNSHIP 8 SOUTH, RANGE 39 EAST, WILLAMETTE MERIDIAN
BAKER COUNTY, OREGON

T. 8 S., R. 39 E., W.M.
SECTION 29



VICINITY MAP
SCALE: 1" = 1000'

LEGEND

() Record Data Per Ba. Co. Partition Plat No. P2002-005.

SHEET 1 OF 4

TITLE SHEET, SHEET INDEX, AND VICINITY MAP

SHEET 2 OF 4

PLAT OF HIGH COUNTRY ESTATES

SHEET 3 OF 4

PLAT OF HIGH COUNTRY ESTATES SHOWING EASEMENT LOCATIONS

SHEET 4 OF 4

EASEMENTS/EXCEPTIONS, ACCESS/UTILITY EASEMENT, NARRATIVE,
DITCH EASEMENT, REFERENCES, SURVEYOR'S CERTIFICATE,
DECLARATION, ACKNOWLEDGMENT, AND APPROVALS.

HANLEY ENGINEERING, INC.

P.O. BOX 701, 2043 MAIN STREET, BAKER CITY, OREGON 97814 (541) 523-3803

I, Thomas J. Hanley, hereby certify that this is an exact duplicate copy of the High Country Estates Subdivision Plat as submitted to the Baker County Clerk for recording.

Thomas J. Hanley
Thomas J. Hanley

REGISTERED
PROFESSIONAL
LAND SURVEYOR

Thomas J. Hanley

OREGON
JULY 13, 1979
THOMAS J. HANLEY
1817

FILED *August 30, 2004*
BAKER COUNTY SURVEYOR
SURVEY NO. *8-39-9250*

Renews June 30, 2005