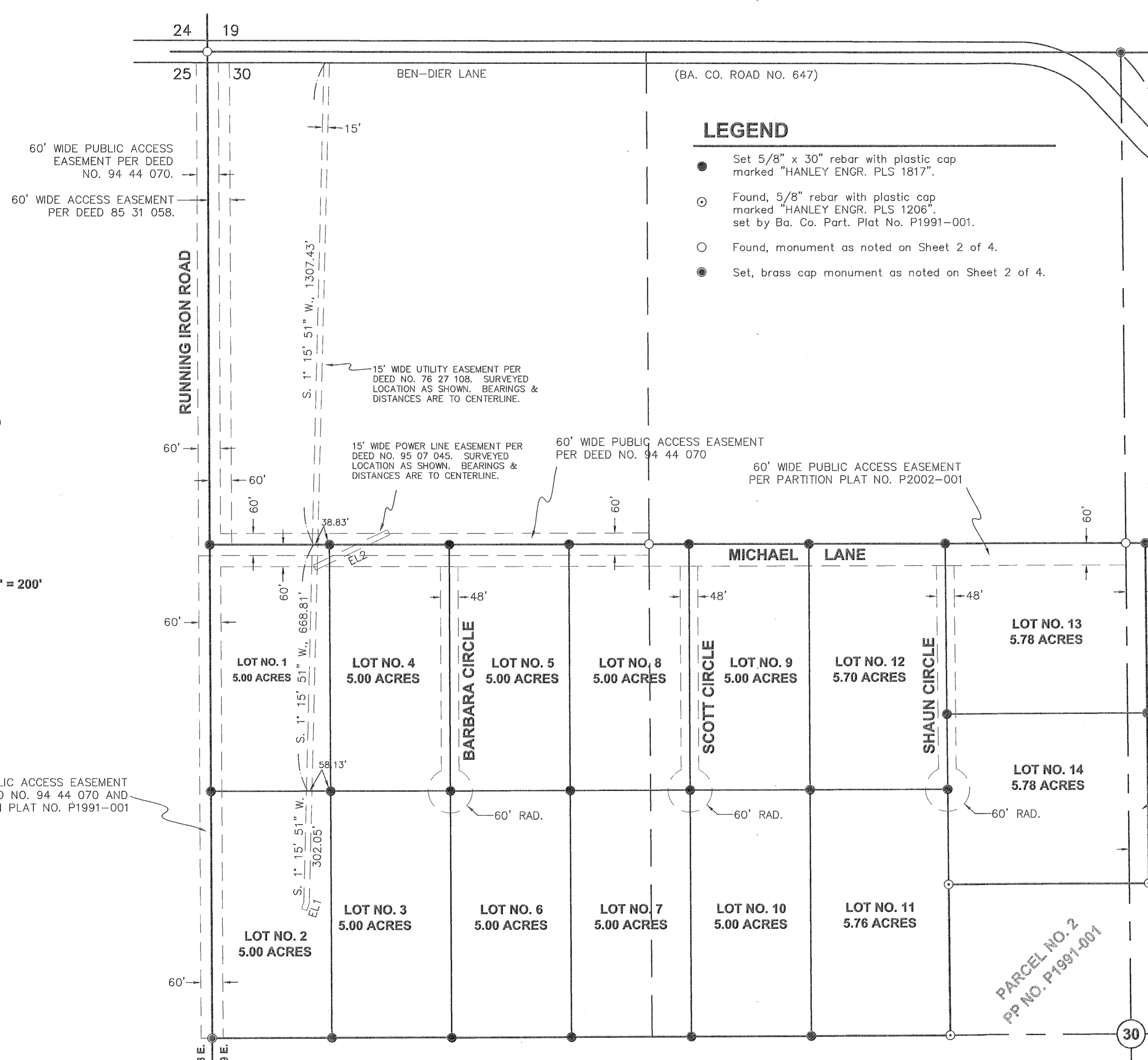


T. 8 S., R. 39 E., W.M.

HEATHER GLEN SUBDIVISION SD2003-002



LEGEND

- Set 5/8" x 30" rebar with plastic cap marked "HANLEY ENGR. PLS 1817".
- Found, 5/8" rebar with plastic cap marked "HANLEY ENGR. PLS 1206". set by Ba. Co. Part. Plat No. P1991-001.
- Found, monument as noted on Sheet 2 of 4.
- Set, brass cap monument as noted on Sheet 2 of 4.

EASEMENT LOCATIONS

EASEMENT LINE TABLE

LINE	BEARING	DISTANCE
EL1	S. 18° 24' 48" W.	20.27'
EL2	N. 64° 24' 20" E.	223.36'

SCALE: 1" = 200'

53' WIDE ACCESS EASEMENT PER DEED NO. 95 07 139

I, Thomas J. Hanley, hereby certify that this is an exact duplicate copy of the Heather Glen Subdivision Plat as submitted to the Baker County Clerk for recording.

Thomas J. Hanley

PARCEL NO. 2
PP NO. P1991-001

REGISTERED
PROFESSIONAL
LAND SURVEYOR
Thomas J. Hanley
OREGON
JULY 13, 1979
THOMAS J. HANLEY
1817

FILED DECEMBER 24, 2003
BAKER COUNTY SURVEYOR
SURVEY NO. B-39-9050

Renews June 30, 2005

HANLEY ENGINEERING, INC.
2043 MAIN STREET
BAKER CITY, OREGON