

T. 8 S., R. 39 E., W.M.

HEATHER GLEN SUBDIVISION SD2003-002

[S. 89° 56' 43" E., 2485.09']
[S. 89° 56' 25" E., 2485.22']

NE CORNER OF THE NW¼
FOUND BADLY BENT 5/8" REBAR ACCEPTED
BY BA. CO. PARTITION PLAT NO. P1990-010.
REPLACED WITH 2½" BRASS CAP MONUMENT.
REFER TO BA. CO. SUR. NO. 8-39-79.

NW CORNER SEC. 30
FOUND 5/8" REBAR WITH YELLOW
PLASTIC CAP (CAP ILLEGIBLE).
ACCEPTED BY PARTITION PLAT
NO. P1990-011.

REFERENCES

- Baker County Deed Book 76, Page 142.
- Baker County Deed No. 76 27 108.
- Baker County Deed No. 85 31 058.
- Baker County Deed No. 91 14 005.
- Baker County Deed No. 94 44 070.
- Baker County Deed No. 95 07 045.
- Baker County Deed No. 95 07 139.
- Baker County Deed No. 02 08 0147.
- Baker County Survey No. 8-39-3.
- Baker County Survey No. 8-39-79.
- Baker County Survey No. 8-39-80.
- Baker County Survey No. 8-39-81.
- Baker County Partition Plat No. P1990-010.
- Baker County Partition Plat No. P1990-011.
- Baker County Partition Plat No. P1991-001.
- Baker County Partition Plat No. P2002-001.

LEGEND

- Set 5/8" x 30" rebar with plastic cap marked "HANLEY ENGR. PLS 1817".
- ⊙ Found, 5/8" rebar with plastic cap marked "HANLEY ENGR. PLS 1206". set by Ba. Co. Part. Plat No. P1991-001.
- Found, monument as noted.
- Set, brass cap monument as noted.
- () Record data per Ba. Co. Partition Plat No. P1991-001.
- { } Record Data Per Ba. Co. Partition Plat No. P2002-001.
- [] Record Data Per Ba. Co. Surv. No. 8-39-81.

T 8 S R 39 E

S 19
1/4 S 30

PLS 1817
2002

N 1/16 C
S 30
ORLS 1206
1978

NW 1/16 S 30
ORLS 1206
1978

FD. 2½" ALUM. CAP
STAMPED AS SHOWN
IN DIAGRAM ABOVE.
NO RECORD FOUND.

N. 89° 55' 25" E., 2492.51'
(N. 89° 55' 53" E., 2492.45')

FD. 2½" ALUM. CAP
STAMPED AS SHOWN IN
DIAGRAM TO THE RIGHT.
NO RECORD FOUND.

S. 89° 56' 31" E., 53.00'

(N. 0° 42' 08" W., 2664.43')
[N. 0° 42' 39" W., 2664.50']

HANLEY ENGINEERING, INC.
2043 MAIN STREET
BAKER CITY, OREGON

I, Thomas J. Hanley, hereby certify that this is
an exact duplicate copy of the Heather Glen
Subdivision Plat as submitted to the Baker
County Clerk for recording.

Thomas J. Hanley
Thomas J. Hanley

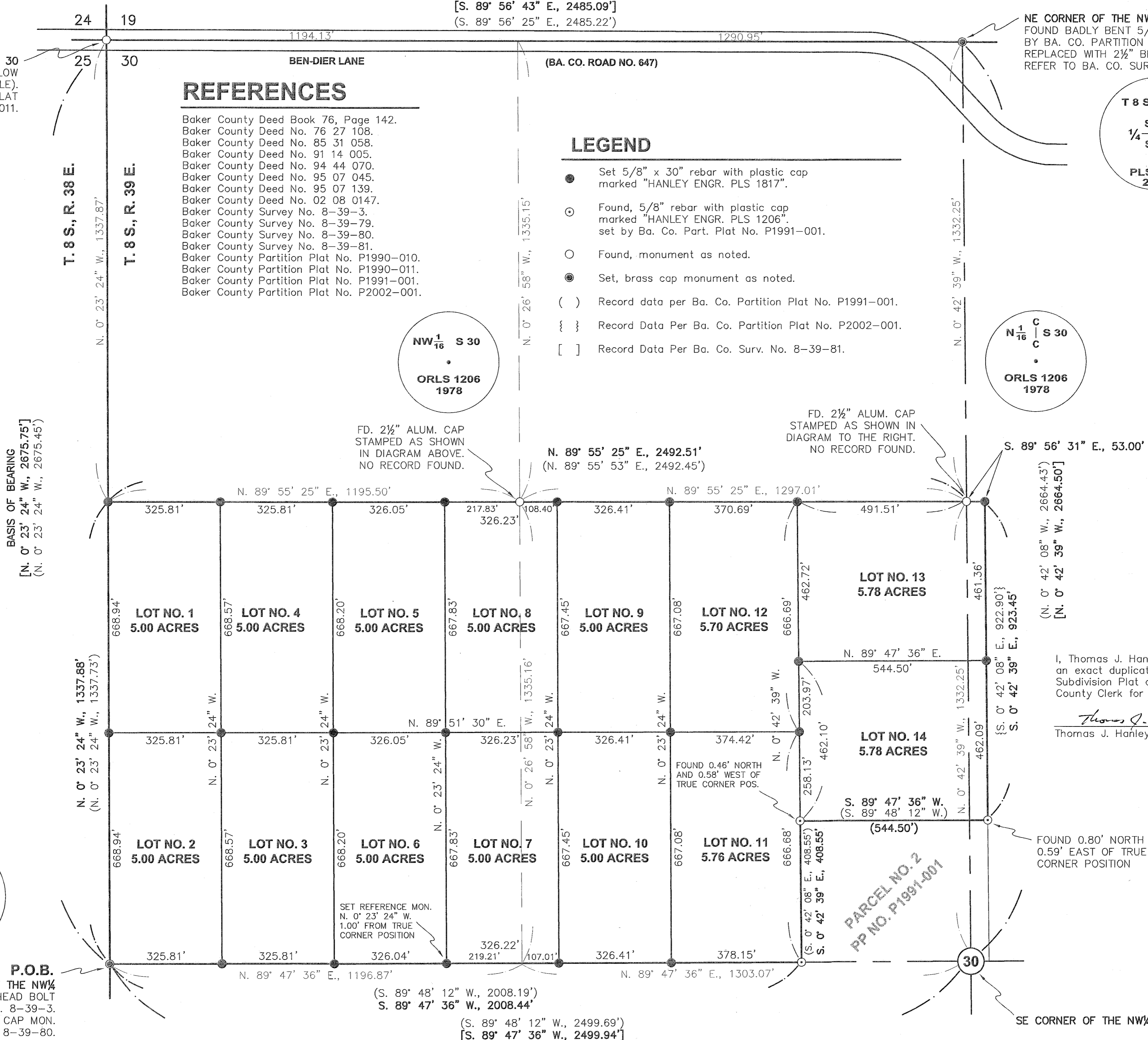
FILED DECEMBER 24, 2003
BAKER COUNTY SURVEYOR
SURVEY NO. B-39-905D

FOUND 0.80' NORTH AND
0.59' EAST OF TRUE
CORNER POSITION

PARCEL NO. 2
PP NO. P1991-001

REGISTERED
PROFESSIONAL
LAND SURVEYOR
Thomas J. Hanley
THOMAS J. HANLEY
JULY 13, 1979
1817

Renews June 30, 2005



SCALE: 1" = 200'

BASIS OF BEARING
Ba. Co. Sur. No. 8-39-81.
West line of the NW¼, Sec. 30
bears N. 0° 23' 24" W.

BASIS OF BEARING
[N. 0° 23' 24" W., 2675.75']
(N. 0° 23' 24" W., 2675.45')

T. 8 S., R. 38 E.

T. 8 S., R. 39 E.

N. 0° 23' 24" W., 1337.88'
(N. 0° 23' 24" W., 1337.73')

P.O.B.

SW CORNER OF THE NW¼
FOUND 1" SQUARE HEAD BOLT
ACCEPTED BY BA. CO. SUR. NO. 8-39-3.
REPLACED WITH 2½" BRASS CAP MON.
REFER TO BA. CO. SUR. NO. 8-39-80.

SET REFERENCE MON.
N. 0° 23' 24" W.
1.00' FROM TRUE
CORNER POSITION

(S. 89° 48' 12" W., 2008.19')
S. 89° 47' 36" W., 2008.44'

(S. 89° 48' 12" W., 2499.69')
[S. 89° 47' 36" W., 2499.94']

SE CORNER OF THE NW¼