

B03 25 0219

B03 25 0220

B03 25 0221

# PARTITION PLAT NO. P2003 - 009

NORTH ¼ CORNER SECTION 29

## T. 8 S., R. 39 E., W.M.

(N. 89° 38' 59" E., 2710.41')

20 21

29 28

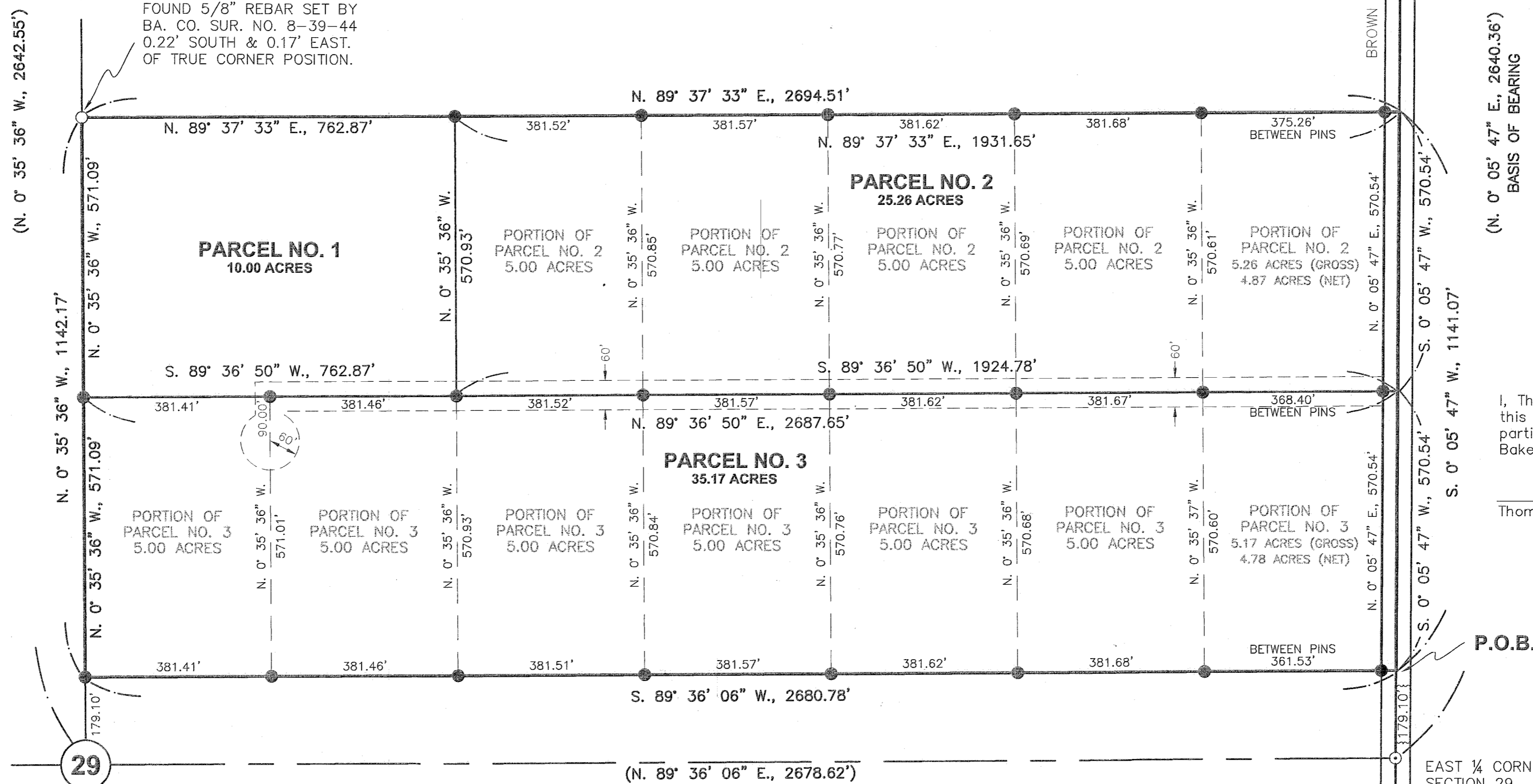
FOUND ½" REBAR PER SUR. NO. 8-39-7.

**BASIS OF BEARING**  
BA. CO. PART. PLAT NO. P2002-005.  
EAST LINE OF THE NE¼ BEARS  
N. 0° 05' 47" E.

SCALE: 1" = 200'

### LEGEND

- Set 5/8" rebar with plastic cap marked "HANLEY ENGR. PLS 1817".
- Found, 5/8" rebar with plastic cap marked "HANLEY ENGR. PLS 1817", set by Ba. Co. Part. Plat No. P2002-005.
- Found, monument as noted.
- ( ) Record Data Per Part. Plat No. P2002-005.
- { } Record Data Per Ba. Co. Deed No. 77 13 081.
- Easement Line (Created by this Plat).



(N. 0° 05' 47" E., 2640.36')  
BASIS OF BEARING

I, Thomas J. Hanley, hereby certify that this is an exact duplicate copy of the partition plat as submitted to the Baker County Clerk for recording.

*Thomas J. Hanley*  
Thomas J. Hanley

FILED June 25, 2003  
BAKER COUNTY SURVEYOR  
SURVEY NO. 8-39-86MP

P.O.B.

REGISTERED  
PROFESSIONAL  
LAND SURVEYOR

*Thomas J. Hanley*  
OREGON  
JULY 13, 1979  
THOMAS J. HANLEY  
1817

Renews June 30, 2003

HANLEY ENGINEERING, INC.  
2043 MAIN STREET  
BAKER CITY, OREGON