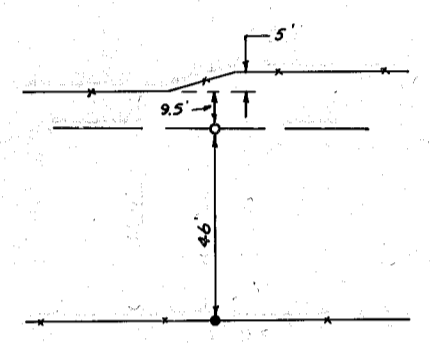
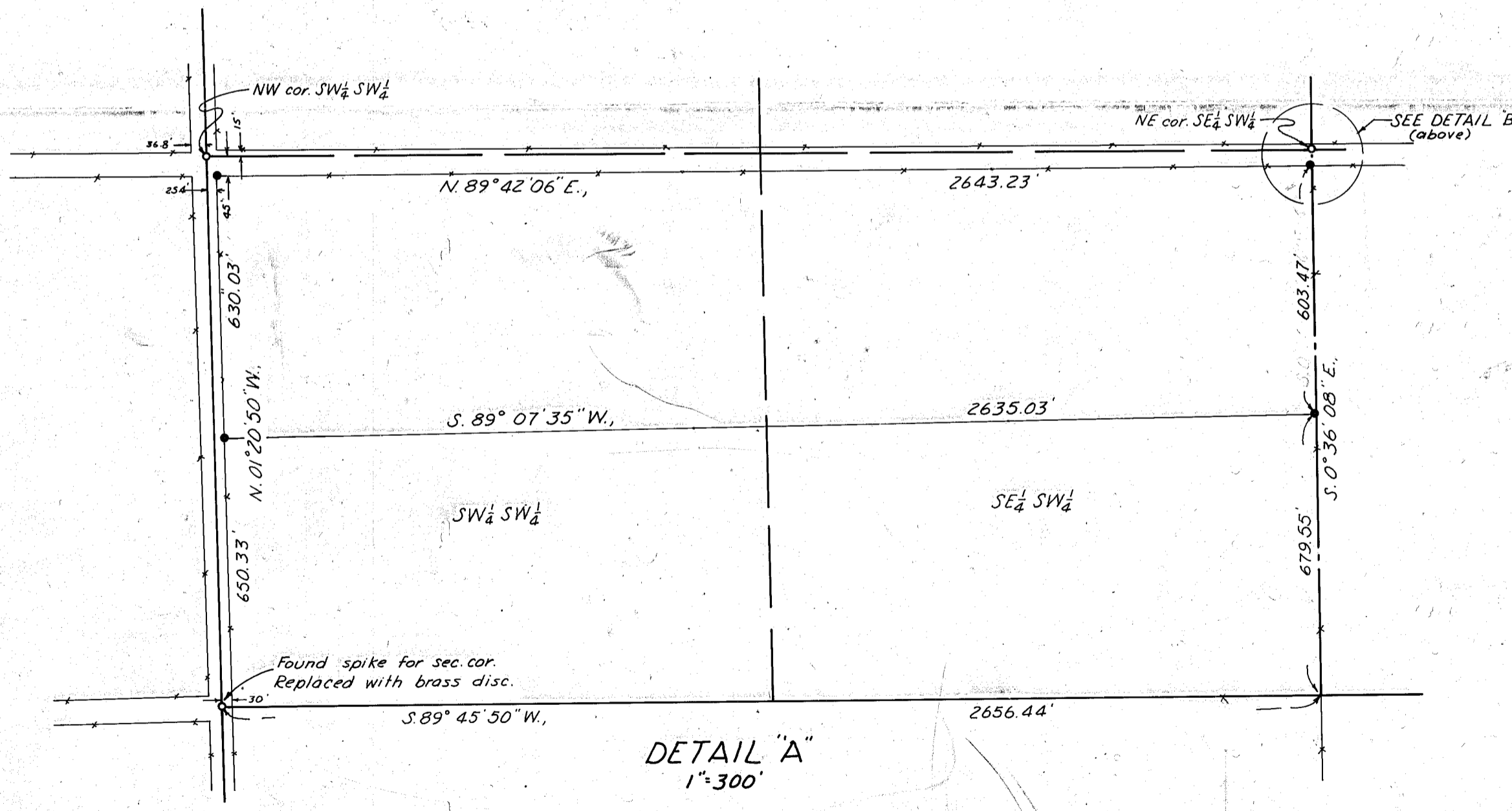


Basis of bearings:
Survey no. 8-39-7, 1973

- Indicates found corner, ref. survey no. 8-39-7, 1973
- Indicates set 1/2" rebar



DETAIL "B"
no scale



MAP OF SURVEY
A PARCEL IN THE S 1/2 SW 1/4
SEC. 29, T. 8 S., R. 39 E., W. M.

FILED Aug. 20, 1975
BAKER COUNTY SURVEYOR
SURVEY NO. 8-39-22

May 13-19, and Aug. 13, 1975 Scales as shown
For Homer Clark

