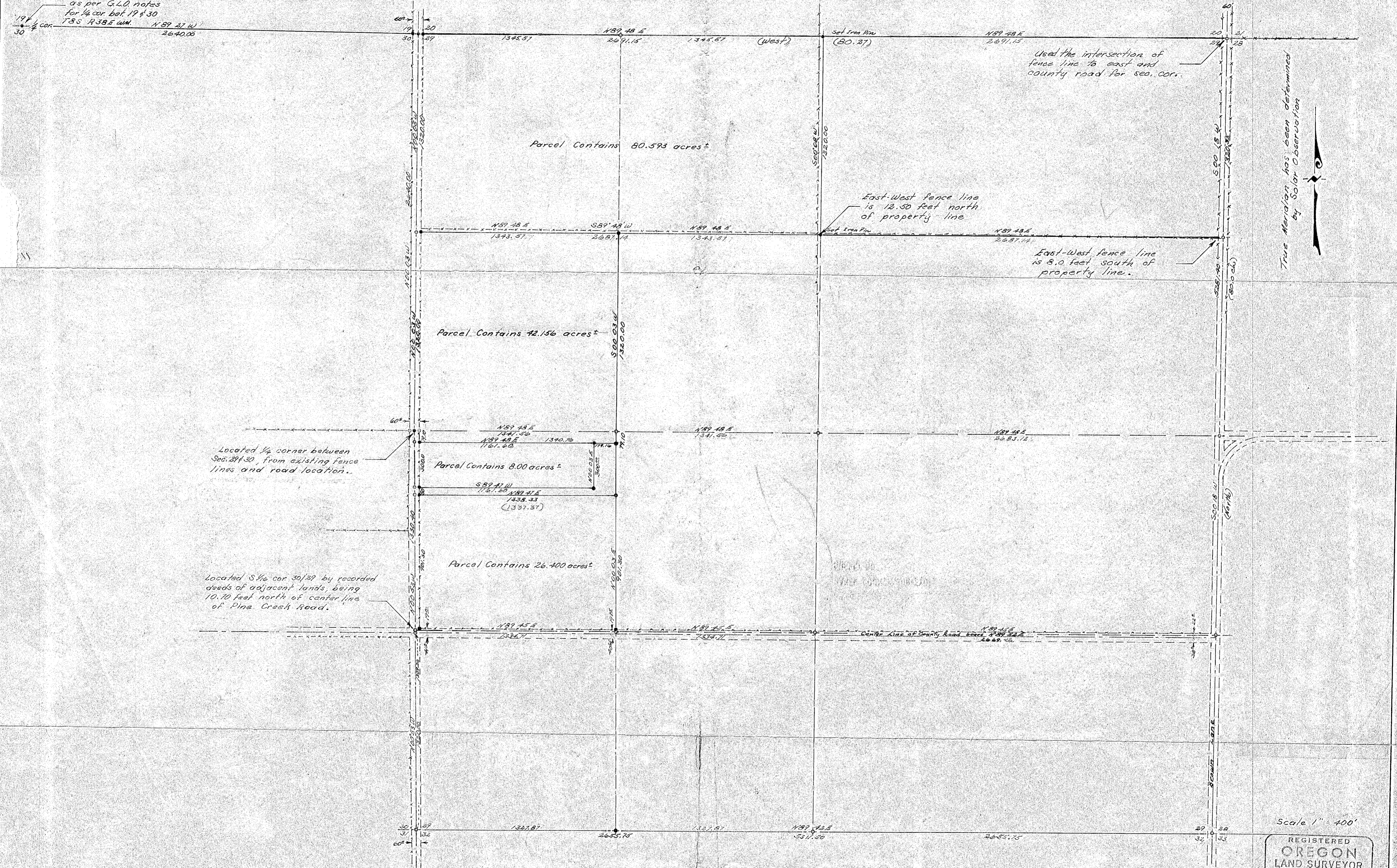


SUBDIVISION OF SECTION 29, T8S, R39E W.M.

Found mound of stone
as per G.L.O. notes
for 1/4 cor. bet. 19 & 30
T8S, R39E W.M. N89° 47' W
2640.00



True Meridian has been determined by Solar Observation



FILED March 28, 1973
BAKER COUNTY SURVEYOR
SURVEY NO. 8-39-11

Revisions on this plat have been made on 9-9-70 by James H. Hambleton ORLS #645

Scale 1" = 400'

REGISTERED OREGON LAND SURVEYOR
James H. Hambleton
7-15-69
JULY 10, 1964
JAMES H. HAMBLETON
645