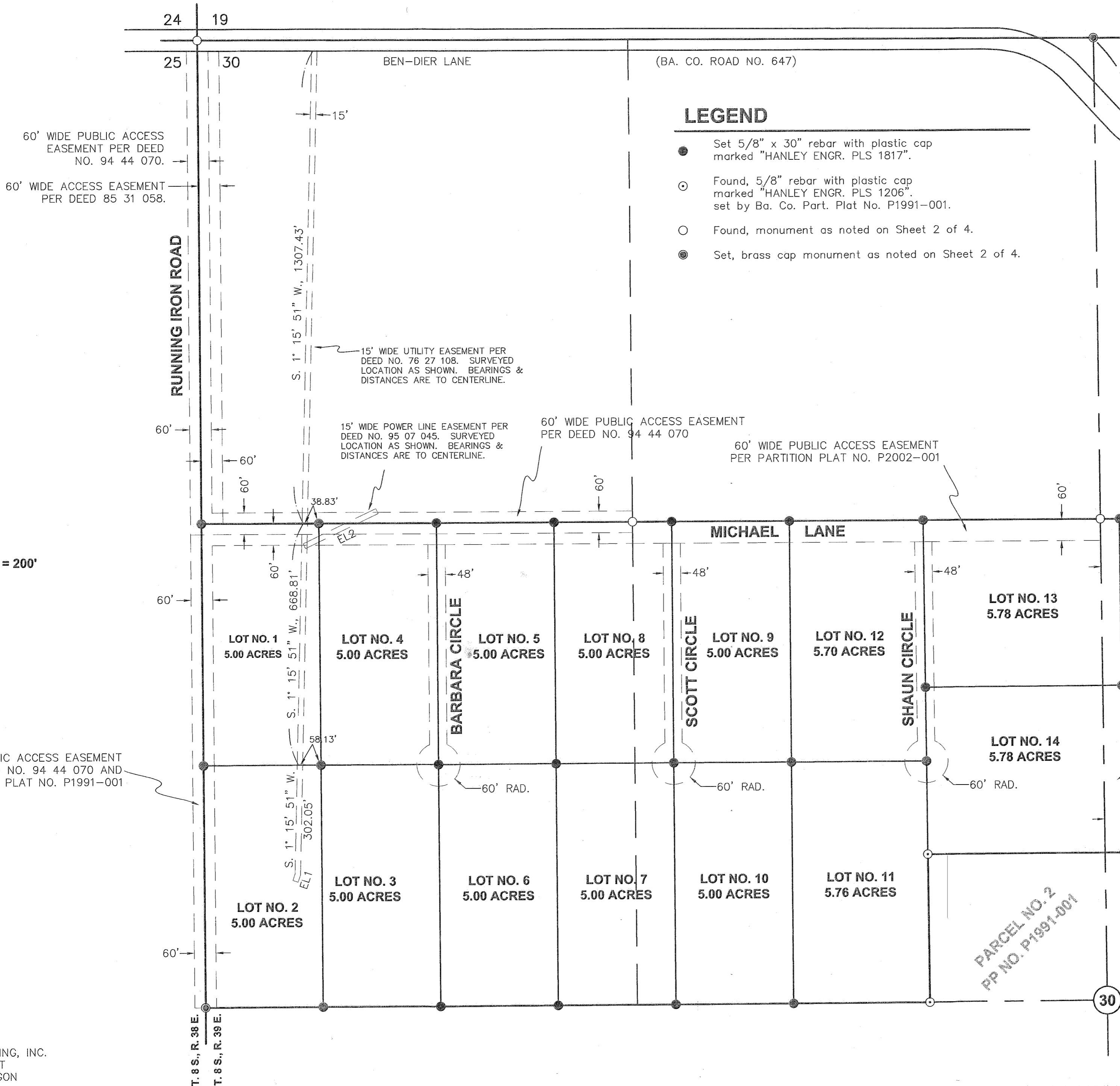


T. 8 S., R. 39 E., W.M.

HEATHER GLEN SUBDIVISION SD2003-001



LEGEND

- Set 5/8" x 30" rebar with plastic cap marked "HANLEY ENGR. PLS 1817".
- Found, 5/8" rebar with plastic cap marked "HANLEY ENGR. PLS 1206". set by Ba. Co. Part. Plat No. P1991-001.
- Found, monument as noted on Sheet 2 of 4.
- Set, brass cap monument as noted on Sheet 2 of 4.

EASEMENT LOCATIONS

EASEMENT LINE TABLE

LINE	BEARING	DISTANCE
EL1	S. 18° 24' 48" W.	20.27'
EL2	N. 64° 24' 20" E.	223.36'

SCALE: 1" = 200'

I, Thomas J. Hanley, hereby certify that this is an exact duplicate copy of the Heather Glen Subdivision Plat as submitted to the Baker County Clerk for recording.

*Thomas J. Hanley*  
Thomas J. Hanley

REGISTERED  
PROFESSIONAL  
LAND SURVEYOR

*Thomas J. Hanley*  
OREGON  
JULY 13, 1979  
THOMAS J. HANLEY  
1817

FILED APRIL 24, 2003  
BAKER COUNTY SURVEYOR  
SURVEY NO. 8-39-825D

Renews June 30, 2003

HANLEY ENGINEERING, INC.  
2043 MAIN STREET  
BAKER CITY, OREGON