

T. 8 S., R. 39 E., W.M.

HEATHER GLEN SUBDIVISION SD2003- 001

[S. 89° 56' 43" E., 2485.09']
[S. 89° 56' 25" E., 2485.22']

24 19

1194.13'

1290.95'

25 30

BEN-DIER LANE

(BA. CO. ROAD NO. 647)

NE CORNER OF THE NW¼
FOUND BADLY BENT 5/8" REBAR ACCEPTED
BY BA. CO. PARTITION PLAT NO. P1990-010.
REPLACED WITH 2½" BRASS CAP MONUMENT.
REFER TO BA. CO. SUR. NO. 8-39-79.

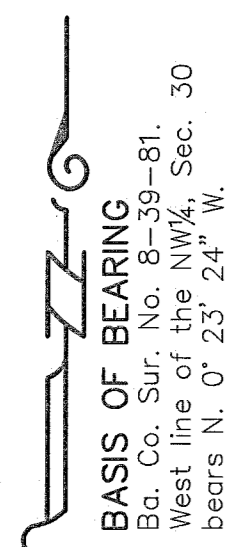
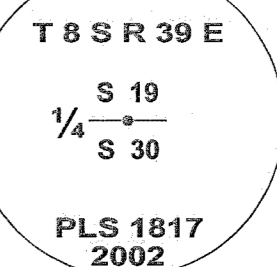
NW CORNER SEC. 30
FOUND 5/8" REBAR WITH YELLOW
PLASTIC CAP (CAP ILLEGIBLE).
ACCEPTED BY PARTITION PLAT
NO. P1990-011.

REFERENCES

- Baker County Deed Book 76, Page 142.
- Baker County Deed No. 76 27 108.
- Baker County Deed No. 85 31 058.
- Baker County Deed No. 91 14 005.
- Baker County Deed No. 94 44 070.
- Baker County Deed No. 95 07 045.
- Baker County Deed No. 95 07 139.
- Baker County Deed No. 02 08 0147.
- Baker County Survey No. 8-39-3.
- Baker County Survey No. 8-39-79.
- Baker County Survey No. 8-39-80.
- Baker County Survey No. 8-39-81.
- Baker County Partition Plat No. P1990-010.
- Baker County Partition Plat No. P1990-011.
- Baker County Partition Plat No. P1991-001.
- Baker County Partition Plat No. P2002-001.

LEGEND

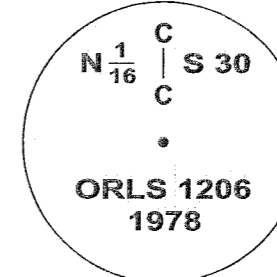
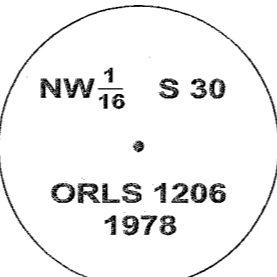
- Set 5/8" x 30" rebar with plastic cap marked "HANLEY ENGR. PLS 1817".
- Found, 5/8" rebar with plastic cap marked "HANLEY ENGR. PLS 1206". set by Ba. Co. Part. Plat No. P1991-001.
- Found, monument as noted.
- Set, brass cap monument as noted.
- () Record data per Ba. Co. Partition Plat No. P1991-001.
- { } Record Data Per Ba. Co. Partition Plat No. P2002-001.
- [] Record Data Per Ba. Co. Surv. No. 8-39-81.



SCALE: 1" = 200'

T. 8 S., R. 38 E.

T. 8 S., R. 39 E.



BASIS OF BEARING
[N. 0° 23' 24" W., 2675.75']
(N. 0° 23' 24" W., 2675.45')

FD. 2½" ALUM. CAP
STAMPED AS SHOWN
IN DIAGRAM ABOVE.
NO RECORD FOUND.

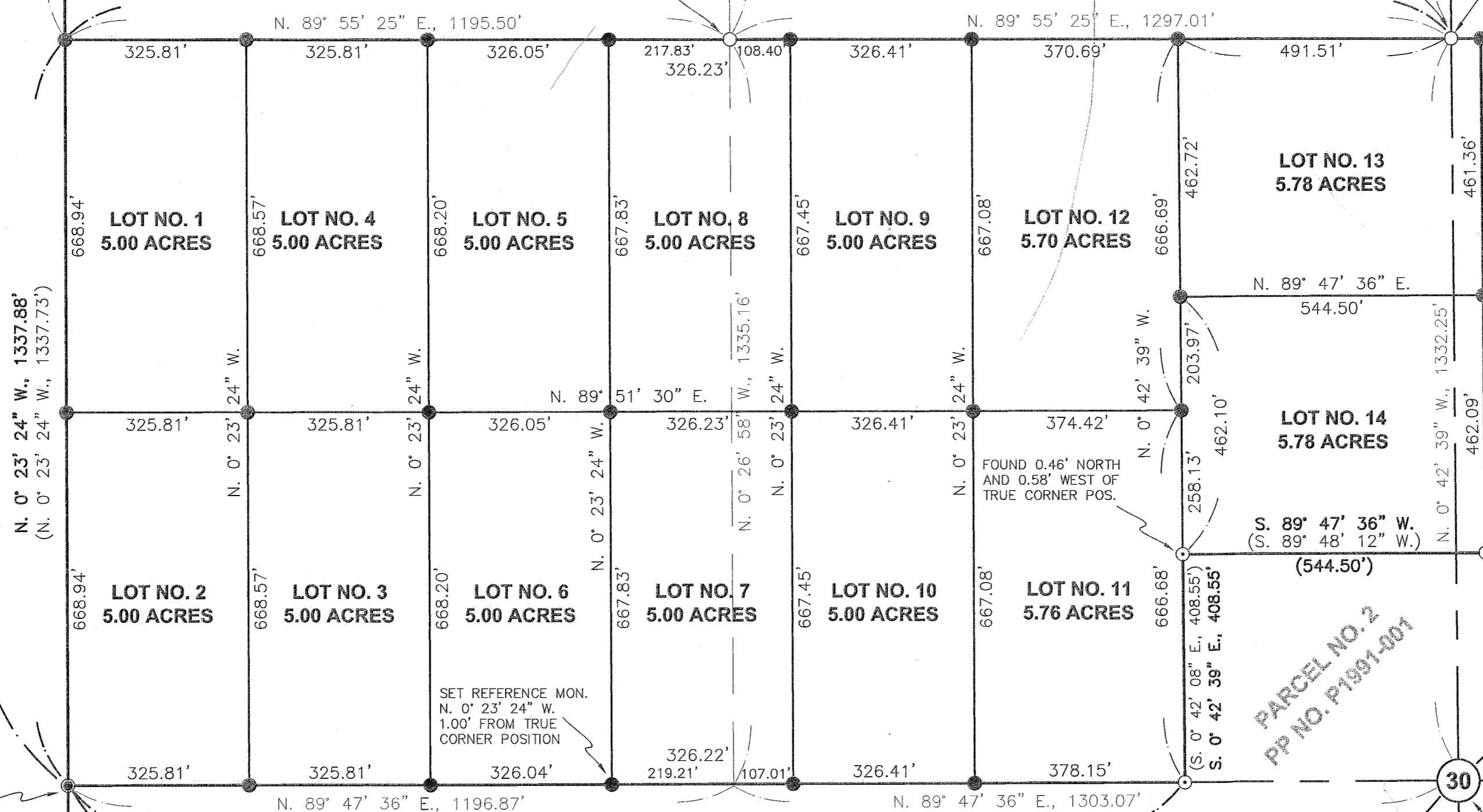
N. 89° 55' 25" E., 2492.51'
(N. 89° 55' 53" E., 2492.45')

FD. 2½" ALUM. CAP
STAMPED AS SHOWN IN
DIAGRAM TO THE RIGHT.
NO RECORD FOUND.

S. 89° 56' 31" E., 53.00'

(N. 0° 42' 08" W., 2664.43')
[N. 0° 42' 39" W., 2664.50']

HANLEY ENGINEERING, INC.
2043 MAIN STREET
BAKER CITY, OREGON



I, Thomas J. Hanley, hereby certify that this is
an exact duplicate copy of the Heather Glen
Subdivision Plat as submitted to the Baker
County Clerk for recording.

Thomas J. Hanley
Thomas J. Hanley

FILED APRIL 24 2003
BAKER COUNTY SURVEYOR
SURVEY NO. B-39-825D

FOUND 0.80' NORTH AND
0.59' EAST OF TRUE
CORNER POSITION

FOUND 0.46' NORTH
AND 0.58' WEST OF
TRUE CORNER POS.

SET REFERENCE MON.
N. 0° 23' 24" W.
1.00' FROM TRUE
CORNER POSITION

PARCEL NO. 2
PP NO. P1991-001

30

SE CORNER OF THE NW¼

P.O.B.
SW CORNER OF THE NW¼
FOUND 1" SQUARE HEAD BOLT
ACCEPTED BY BA. CO. SUR. NO. 8-39-3.
REPLACED WITH 2½" BRASS CAP MON.
REFER TO BA. CO. SUR. NO. 8-39-80.

(S. 89° 48' 12" W., 2008.19')
S. 89° 47' 36" W., 2008.44'

(S. 89° 48' 12" W., 2499.69')
[S. 89° 47' 36" W., 2499.94']

REGISTERED
PROFESSIONAL
LAND SURVEYOR
Thomas J. Hanley
OREGON
JULY 13, 1979
THOMAS J. HANLEY
1817

Renews June 30, 2003