

CERTIFIED RECORD OF LAND CORNER MONUMENTATION

History of original corner establishment:

Corner established by John Hagel, U.S. Deputy Mineral Surveyor, under instructions received from the United States Surveyor General for Oregon dated Oct. 19, 1899, and designated as Survey No. 378.

Surveyor General records state:

Set a white fir post, 4 ins. square, 4 1/2 ft. long, 18 ins. in the ground, with a mound of earth around it, marked Tel. C. 8-378.

A white fir tree, 14 ins. in diam., bears S62°30'W, 17.8 ft.
A white fir tree, 13 ins. in diam., bears S52°E, 7.0 ft.
Both blazed and marked Tel. C. 8-378 BT.

Corner was reestablished by: John Hagel, U.S. Deputy Mineral Surveyor, under instructions dated Nov. 28, 1900, and designated as Survey No. 378 Amended.

Record states:

Set a white fir post, 4 ins. square, 4 1/2 ft. long, 18 ins. in the ground with a mound of earth around it, marked TEL. C. 8-378.

A white fir tree, 12 ins. in diam., bears N79°W, 18.5 ft.
A black pine tree, 11 ins. in diam., bears S51°50'W, 9.3 ft.
both blazed and marked TEL. C. 8-378-BT.

Corner was remonumented by: John R. Mitchell, an unlicensed Forester, as described by USFS Corner Card, dated 11/20/80.

Record states:

24" down WF, brs N70°W, 17.8' with full scribing in open blaze. Not record bearing and distance. Record is N79°W, 18.5'.

Set 2 1/2" BC on 32" 1" gal pipe in mnd of earth & stone marked Tel. 8 MS378 1980.

8" Lpp. bears N82°W 16' marked Tel. 8 MS 378 BT.

Corner was visited by: Ken Lind, LS, for the Wallowa-Whitman National Forest in 2001.

Record states:

Amended Corner 8 was originally a post with two bearing trees. The original post was not found. One bearing tree is missing and was probably destroyed by the construction of the ditch running beside the monument. The remaining bearing tree is dead and has broken at the stump level and fallen over. Original scribing was found. According to the notes of the unlicensed USFS surveyor, the monument was not set at the record bearing and distance from the remaining bearing tree, making me think that he may have found evidence of the original post and set the monument at that point, although he made no mention of that. I believe the remaining bearing tree is the best evidence left of the original corner position and should be used to reset the monument. The actual corner position based on the record measurement from the original bearing tree is within 3 feet of the found monument. Two new bearing trees were taken by the unlicensed USFS surveyor, although only one of them was recorded in his notes.

Corner was perpetuated by: Leland Myers, per Baker County Survey 8-37-135/9-37-279 in 2003. No Corner Record for this Monument was found. It is apparent Myers accepted the Mitchell brass cap and stamped his number and date over the top of Mitchell's.

Corner was perpetuated by: Jason Hatfield, LS 69454, earlier this summer, based on the found washers and Bearing Tree tags.

Continued on page 2 of 2

T 8 S R 37 E
MS 378 AMD
8 TEL

TELEPHONE
Cor. 8

REGISTERED
PROFESSIONAL
LAND SURVEYOR

Kristina Powell

OREGON
MAY 9, 2017
KRISTINA POWELL
91201

EXPIRES 12-31-24

FILED January 8, 2024
BAKER COUNTY SURVEYOR
SURVEY NO. 8-37-186

CERTIFIED RECORD OF LAND CORNER MONUMENTATION

Description of corner evidence found:

A 1 inch galv. iron pipe with a 2 1/2 inch brass cap, marked as shown. Firmly set 4 inches above ground, with rock collar.

From which:

A stump, bears N70°W, 17.8 feet. (Mitchell noted a down 24 inch white fir with full scribing, not at the original bearing and distance.)

A rotten stump, no scribe marks, bears S62 1/2°W, 17.8 feet. (Mitchell noted a 26 inch dead white fir with full scribing.)

A 10 inch lodgepole pine (by Mitchell) with visible scribe marks on mostly healed blaze, bears N82 1/2°W, 16.2 feet, alive & healthy.

An 18 inch tamarack with healed blaze, bears N76 1/2°W, 20.4 feet to a 1 1/2 inch SS washer in right side center mkd: PLS 69454, alive & healthy.

An aluminum channel post bears N20 1/2°E, 5 feet with Property Boundary and Land Survey Monument signs.

Monument falls East 410 feet from Fruit Creek Road; approximately 5,000 feet northerly of the intersection with NF-5540 Road.

Description of monument and accessories I established to perpetuate original location of this corner:

Added Bearing Tree and Land Survey Monument signs as needed.

NAD 83 Geodetic Position

Lat. 44°49'17.5" N
Long. 118°12'33.7" W

Established by: Garmin ETREX 32x

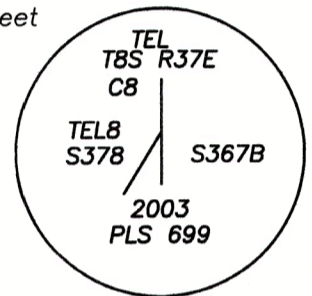
I hereby certify that the corner is monumented and accessories taken as described using a steel tape and a Warren Knight staff compass, set with a declination of 14° East.

Witnesses: David Quittschreiber, Justin Seal

September 21, 2023

T 8 S R 37 E
MS 378 AMD
8 TEL

TELEPHONE
Cor. 8



*2003 stamping was done over the top of the Mitchell stamping.

REGISTERED
PROFESSIONAL
LAND SURVEYOR

OREGON
MAY 9, 2017
KRISTINA POWELL
91201

EXPIRES 12-31-24

FILED January 8, 2024
BAKER COUNTY SURVEYOR
SURVEY NO. 8-37-186