

CERTIFIED RECORD OF LAND CORNER MONUMENTATION

History of original corner establishment:

Corner established by John Hagel, U.S. Deputy Mineral Surveyor, under instructions received from the United States Surveyor General for Oregon dated Oct. 19, 1899, and designated as Survey No. 378.

Surveyor General records state:

Set a white fir post, 4 ins. square, 4 1/2 ft. long, 18 ins. in the ground, with a mound of earth around it, marked Tel. C. 7-378.

A bull pine 14 ins. in diam. bears S69°E, 22.9 ft.
A bull pine 7 ins. in diam. bears S82°30'W, 14.0 ft.

Corner was reestablished by: John Hagel, U.S. Deputy Mineral Surveyor, under instructions dated Nov. 28, 1900, and designated as Survey No. 378 Amended.

Record states:

Set a white fir post, 4 ins. square, 4 1/2 ft. long, 18 ins. in the ground with a mound of earth around it, marked TEL. C. 7-378.

Cor. No. 1 of the Cyclone Mill Site Surv. 367-B bears N20°30'E, 10.5 ft.
A white fir tree, 12 ins. in diam., bears S40°25'E, 23.2 ft.
A white fir tree, 14 ins. in diam., bears S19°W, 22.6 ft.
both blazed and marked TEL. C. 7-378-BT.

Corner was reestablished or remonumented by: Leland Myers, per Baker County Survey 8-37-135/9-37-279, in 2003. No Corner Record for this Monument was found. The methodology of the corner is unknown.

Description of corner evidence found:

A 1 inch galv. iron pipe with a 2 1/2 inch brass cap, marked as shown. Firmly set 2 inches above ground.

From which:

A 10 inch tamarack (by Meyers) no blaze, bears S38°W, 29.1 feet to 1 1/2 inch SS washer mkd: PLS 699, alive and healthy.
I scribe "7T 378 BT" in this tree this trip.

An aluminum channel post bears N20 1/2°E, 5 feet with Property Boundary sign.

Monument falls East 410 feet from Fruit Creek Road; approximately 5,000 feet northerly of the intersection with NF-5540 Road.

Description of monument and accessories I established to perpetuate original location of this corner:

New Bearing Tree:

A 6 inch lodgepole pine scribed "X BT" on single blaze, bears S77 1/2°E, 27.7 feet to a 3/4 inch brass tag mkd: PLS 91201 in right side center.

Added Bearing Tree and Land Survey Monument signs as needed.

NAD 83 Geodetic Position

Lat. 44°49'18.1" N
Long. 118°12'33.3" W

Established by: Garmin ETREX 32x

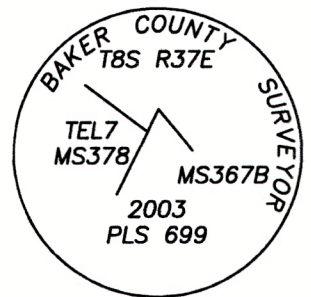
I hereby certify that the corner is monumented and accessories taken as described using a steel tape and a Warren Knight staff compass, set with a declination of 14° East.

Witnesses: David Quittschreiber, Justin Seal

September 21, 2023

T 8 S R 37 E
MS 378 AMD
7 TEL

TELEPHONE
Cor. 7



REGISTERED
PROFESSIONAL
LAND SURVEYOR

Kristina Powell

OREGON
MAY 9, 2017
KRISTINA POWELL
91201

EXPIRES 12-31-24

FILED January 8, 2024
BAKER COUNTY SURVEYOR
SURVEY NO. 8-37-185