

# RECORD OF LAND CORNER MONUMENTATION

NORTHWEST 1/16 CORNER SECTION 30, T. 8 S., R. 37 E., W.M.

**ORIGINALLY ESTABLISHED BY:** CORNER NOT PREVIOUSLY ESTABLISHED

**GROUP NUMBER:** N/A

**APPROVAL DATE:** N/A

19		19	20
30		30	29
	●		
30		30	29
31		31	32

**ORIGINAL DESCRIPTION:** N/A

**EVIDENCE FOUND:** N/A

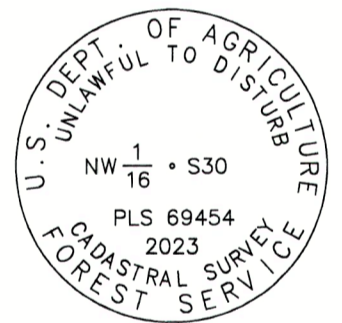
**DESCRIPTION OF MONUMENTS AND ACCESSORIES SET AND METHODS USED:**

At the corner point as determined by survey, I set a standard USFS 2 1/2" x 30" aluminum pipe with attached 3 1/4" aluminum cap, 26" in the ground. Raised a 3 ft. diameter mound of stone around the monument to top of cap. Cap is marked as shown below.

From which, **I SCRIBE NEW BEARING TREES:**

- ▶ An Engelmann spruce, 14" dbh, bears N.32°E., 37.25 ft. marked *NW1/16 S30* in upper blaze, and *BT* in lower blaze.
- ▶ A lodgepole pine, 17" dbh, bears S.08°W., 23.72 ft. marked *NW1/16 S30* in upper blaze, and *BT* in lower blaze.

CORNER MONUMENT  
MARKED:



Placed a plastic-encased magnet beneath the base of the pipe. Painted a 6 inch red band around each bearing tree, and also painted the blazes red. Attached USFS 54-3 and 54-9 signs to BT's. Used a hand compass with 14° East declination to measure bearings to accessories. Used an EDM device to measure distances to new bearing trees, measuring to a 60d nail driven in the side-center at the root crown of the tree, with an attached 1 1/2" aluminum washer stamped PLS 69454. Set an aluminum guard post South, with USFS 54-2 and 54-9 signs attached, and another one East, with USFS 54-2 sign attached. See associated Map of Survey dated October 17, 2023 for survey-related information.

**RESTORATION BY, STAMP AND DATE:**

Work performed August 29, 2023  
Survey completed October 17, 2023, by:

Jason L. Hatfield, PLS  
Daniel B. Lee, Survey Tech  
Toribio J. Quinones, LSIT

USDA FOREST SERVICE  
NORTHEAST OREGON LAND ZONE  
1550 Dewey Avenue, Suite A  
Baker City, OR 97814  
(541) 523-1283



FILED December 20, 2023  
BAKER COUNTY SURVEYOR  
SURVEY NO. 8-31-144