

RECORD OF LAND CORNER MONUMENTATION

CORNER #4 ESRASKLE QUARTZ MINING CLAIM, MINERAL SURVEY 591,
SITUATED IN SECTION 32, T. 8 S., R. 37 E., W.M.
PAGE 1 OF 2

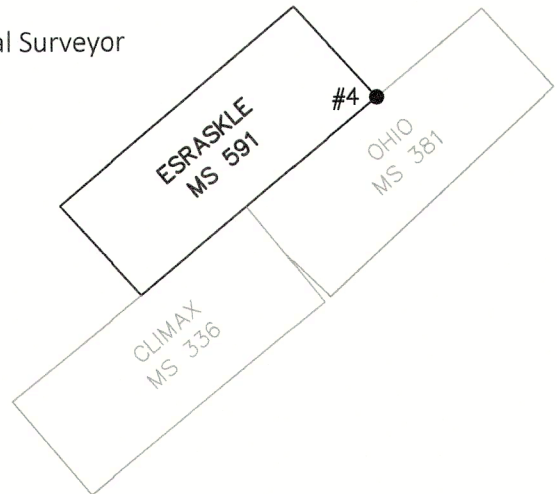
ORIGINALLY ESTABLISHED BY: Charles M. Foster, U.S. Deputy Mineral Surveyor

MINERAL SURVEY NUMBER: 591

COMPLETION DATE: September 4, 1904

SUBSEQUENT SURVEYS:

- ▶ G.L.O. Retracement by Lincoln E. Wilkes, U.S. Cadastral Engineer, under Group No. 107, Approved May 26, 1927
- ▶ Corner search notes by John R. Mitchell, an unlicensed Survey Technician, as documented on U.S. Forest Service corner card dated 9/10/1969
- ▶ Unrecorded remonumentation by John R. Mitchell, an unlicensed Survey Technician, as documented on U.S. Forest Service corner card dated 7/7/1981



ORIGINAL DESCRIPTION: To Cor. No. 4 A tamarack post 4 ft long, 4 ins square, set 18 ins in the ground, surrounded with a mound of earth & stone and marked Esraskle-4-591 Identical with location S.E. cor. post. From which A pine 10 ins in diam. bears S27°40'E 1.6 ft. dist. marked Esraskle-4-591-B.T. A fir 6 ins in diam. bears N15°30'W 6.7 ft. dist. marked -4-591-B.T.

G.L.O. DESCRIPTION: To cor. No. 4, as described.

MITCHELL'S 1969 DESCRIPTION:

DESCRIBE CORNER MONUMENT FOUND:

Post, 5 X 5, Down - Good condition marked ESRASKLE - 591 - 4

DESCRIBE BEARING TREES OR OTHER OFFICIAL ACCESSORIES FOUND

The bearing trees for this corner removed by the power Co. and the cor. post was moved to the Eastward about 25 ft. The cor. is in the R. of W.

MITCHELL'S 1981 DESCRIPTION:

DESCRIBE CORNER MONUMENT FOUND

Rotting post w/scribing in md of stone

MONUMENT: DESCRIBE NEW MONUMENT SET, OR WORK DONE TO PRESERVE EXISTING MONUMENT:

2 1/2" BC on 1" X 32" gal. pipe set 26" deep in old hole & md marked ESR C4 MS591 JRM 1981 & angle

ACCESSORIES: DESCRIBE NEW BT's WITNESS OBJECTS ETC. ESTABLISHED, OR WORK DONE TO PRESERVE EXISTING EVIDENCE:

10" WF brs N35°E 18'

11" WF brs N8°W 22'; both marked ESR 4 MS 591 BT

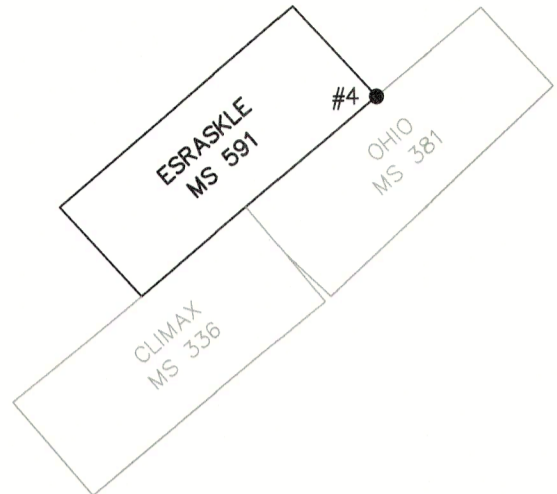
EVIDENCE FOUND: Found Mitchell's unrecorded monument, which is a 1 1/2" galvanized iron pipe with a 2 1/2" brass cap, marked as shown, projecting 3" above ground in a 3 ft. diameter mound of stone. From which,

- ▶ A white fir stump (broken off), bears N.07°03'E., 21.5 ft., with decaying bole alongside (Mitchell BT)
- ▶ A white fir stump (broken off), bears N.36°E., 17.6 ft., with decaying bole alongside (Mitchell BT)

FILED September 24, 2015
BAKER COUNTY SURVEYOR
SURVEY NO. 8-37-237

RECORD OF LAND CORNER MONUMENTATION

CORNER #4 ESRASKLE QUARTZ MINING CLAIM, MINERAL SURVEY 591,
SITUATED IN SECTION 32, T. 8 S., R. 37 E., W.M.
PAGE 2 OF 2

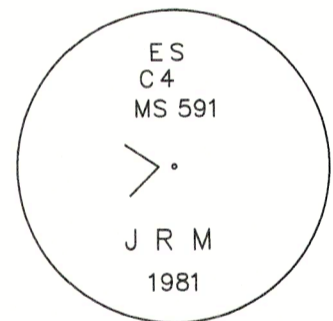


DESCRIPTION OF MONUMENTS AND ACCESSORIES SET AND METHODS USED: I accept Mitchell's brass cap monument as a faithful and accurate perpetuation of the original corner, being harmoniously related to other found accepted corners in the area.

From which, **I SCRIBE NEW BEARING TREES:**

- ▶ A white fir 15" dbh, bears N.58°E., 33.0 ft. marked *ESR 4 - 591* in upper blaze, and *XBT* in lower blaze.
- ▶ A ponderosa pine 14" dbh, bears S.75°W., 36.35 ft. marked *ESR 4 - 591* in upper blaze, and *XBT* in lower blaze.

CORNER MONUMENT MARKED:



Painted a 6 inch red band around each new bearing tree, and also painted the blazes red, and attached USFS 54-3 and 54-9 signs. Distances measured with a steel tape to a Mag Spike driven in the side-center-right at the root crown of each tree, with an attached 1 1/2" aluminum washer stamped *PLS 69454*. Used RTK GPS to measure bearings. Bearings are geodetic, based on GPS observation taken at the corner. Set an aluminum guard post N.41°W., 5 ft. with USFS 54-2 sign attached. See associated Map of Survey dated August 20, 2025 for survey-related information.

RESTORATION BY, STAMP AND DATE:

Work performed August 13, 2024
Survey completed August 20, 2025

Jason L. Hatfield, PLS
Spencer B. Jones, Survey Technician

USDA FOREST SERVICE
NORTHEAST OREGON LAND ZONE
1550 Dewey Avenue, Suite A
Baker City, OR 97814
(541) 523-1283

FILED September 24, 2025
BAKER COUNTY SURVEYOR
SURVEY NO. 8-37-237

REGISTERED
PROFESSIONAL
LAND SURVEYOR

Jason L. Hatfield
OREGON
NOVEMBER 30, 2007
JASON L. HATFIELD
#69454

EXPIRES: 6/30/2027