

# RECORD OF LAND CORNER MONUMENTATION

CORNER #3 PROTECTION QUARTZ CLAIM, MINERAL SURVEY 366,  
SITUATED IN SECTION 32, T. 8 S., R. 37 E., W.M.

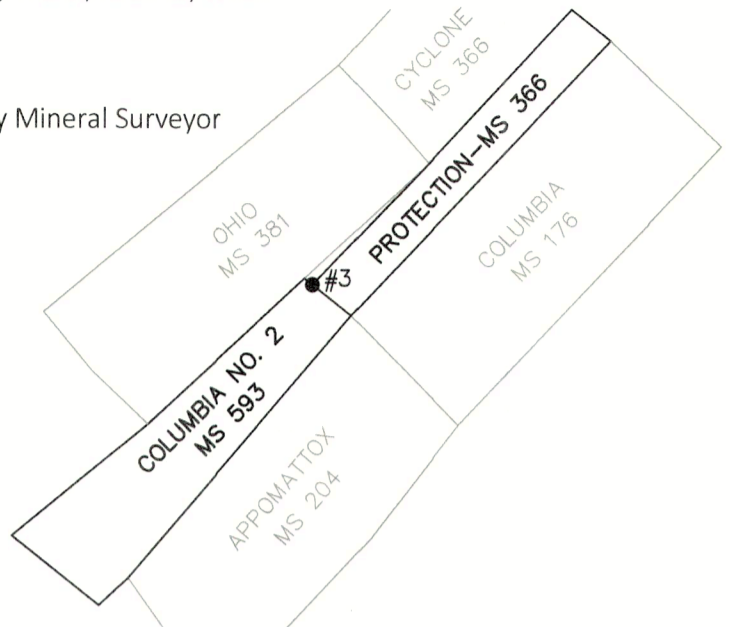
**ORIGINALLY ESTABLISHED BY:** Charles M. Foster, U.S. Deputy Mineral Surveyor

**MINERAL SURVEY NUMBER:** 366

**COMPLETION DATE:** August 18, 1899

**SUBSEQUENT SURVEYS:**

- ▶ Mineral Survey 593 by Charles M. Foster, U.S. Deputy Mineral Surveyor, completed September 6, 1904
- ▶ Unrecorded remonumentation by John R. Mitchell, an unlicensed Survey Technician, as documented on U.S. Forest Service corner card dated 7/5/1981



**ORIGINAL DESCRIPTION:** To Cor. No. 3. Identical with old corner a Post 4 1/2 ft. long 4 inches square set 18 inches in the ground with mound of earth scribed Cor No. 3-366  
a Tamarac 14 inches dia., bears N34°W 14 ft. blazed and scribed Cor No 3 - 366 BT

**MS 593 DESCRIPTION:** Pass Cor. No. 3 of said Protection Claim M.S. No. 366 A pine post 4 ft. long 5 ins. square, set 18 ins in the ground surrounded with a mound of earth & scribed Protection Cor. 3-366

**MITCHELL'S 1981 DESCRIPTION:**

*DESCRIBE CORNER MONUMENT FOUND:* Rotted post in md of stone w/ scribing

*MONUMENT: DESCRIBE NEW MONUMENT SET, OR WORK DONE TO PRESERVE EXISTING MONUMENT*

2 1/2" BC on 1" X 32" gal. pipe set 24" deep in original hole & mound marked PRO C3 MS 366 JRM 1981 & angle

*ACCESSORIES: DESCRIBE NEW BT's WITNESS OBJECTS ETC. ESTABLISHED, OR WORK DONE TO PRESERVE EXISTING*

*EVIDENCE:* 11" WF brs N6°E 13'; 8" LPP brs N35°W 26 1/2' both marked PRO 3 MS 366 B.T.

**EVIDENCE FOUND:** Found Mitchell's unrecorded monument, which is a 1 1/2" galvanized iron pipe with a 2 1/2" brass cap, marked as shown, projecting 8" above ground in an embedded mound of stone. From which,

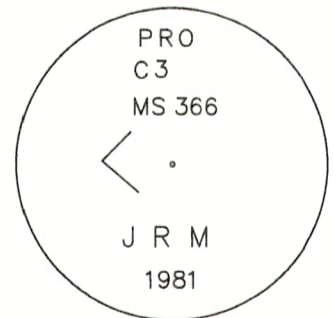
- ▶ A white fir, 20" dbh, bears N.11°E., 13.4 ft. with fully-healed single blaze (Mitchell BT)
- ▶ A lodgepole pine, 11" dbh, bears N.35°W., 26.3 ft. with visible scribing in a partially-healed single blaze (Mitchell BT)

I also searched for, but found no remains of the original bearing tree from MS 366.

**DESCRIPTION OF MONUMENTS AND ACCESSORIES SET AND METHODS USED:**

I accept Mitchell's brass cap monument as a faithful and accurate perpetuation of the original corner, being harmoniously related to other known corners in the area.

**CORNER MONUMENT MARKED:**



I did not paint the bearing trees. Distances measured with a steel tape to the side-center-right at the root crown of each tree. Used RTK GPS to measure bearings. Bearings are geodetic, based on GPS observation taken at the corner. See associated Map of Survey dated August 20, 2025 for survey-related information.

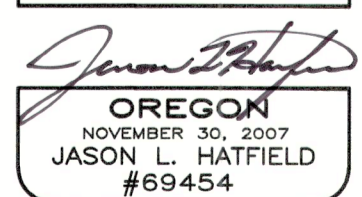
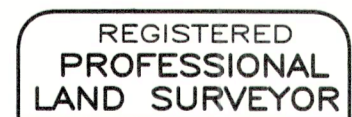
**RESTORATION BY, STAMP AND DATE:**

Work performed August 13, 2024  
Survey completed August 20, 2025

Jason L. Hatfield, PLS  
Spencer B. Jones, Survey Technician

USDA FOREST SERVICE  
NORTHEAST OREGON LAND ZONE  
1550 Dewey Avenue, Suite A  
Baker City, OR 97814  
(541) 523-1283

FILED September 24, 2025  
BAKER COUNTY SURVEYOR  
SURVEY NO. 8-37-230



EXPIRES: 6/30/2027