

RECORD OF LAND CORNER MONUMENTATION

CORNER #2 CENTRAL PLACER CLAIM, MINERAL SURVEY 256,
IDENTICAL WITH CORNER #4 THOMPSON QUARTZ CLAIM, MINERAL SURVEY 252 (UNPATENTED),
SITUATED IN SECTION 29, T. 8 S., R. 37 E., W.M.
PAGE 1 OF 2

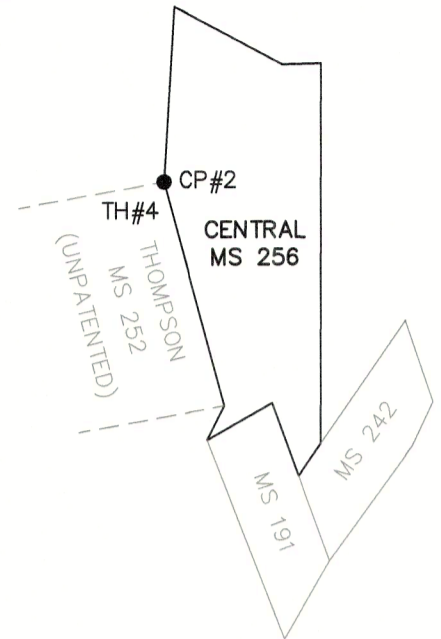
ORIGINALLY ESTABLISHED BY: Emil F. Voigt, U.S. Deputy Mineral Surveyor

MINERAL SURVEY NUMBER: 252

COMPLETION DATE: June 18, 1892

SUBSEQUENT SURVEYS:

- ▶ Mineral Survey 256 by Emil F. Voigt, U.S. Deputy Mineral Surveyor, completed September 10, 1892
- ▶ G.L.O. Retracement by Lincoln E. Wilkes, U.S. Cadastral Engineer, under Group No. 107, Approved May 26, 1927
- ▶ Corner search notes by John R. Mitchell, an unlicensed Survey Technician, as documented on U.S. Forest Service corner card dated 7/29/1969
- ▶ Unrecorded remonumentation by John R. Mitchell, an unlicensed Survey Technician, as documented on U.S. Forest Service corner card dated 9/18/1980



ORIGINAL DESCRIPTION: To corner No. 4. Set a post 4 ½ feet long 4 inches square, 12 inches in the ground with mound of stone, marked Cor. 4 T.Q.C. from which N.E location corner bears N.13°E. 96 feet distant.
A Fir 18 inches dia, blazed and marked Cor. 4 T.Q.C. B.T. bears West 39 feet distant.
A Fir 20 inches dia, bears S.65°W. 37 feet distant marked B.T.

MINERAL SURVEY 256 DESCRIPTION: to Corner No. 2, identical with old location Corner No. 2, and Cor. 4 Tacoma Cons. M.S. No 252, previously described, mark it on east and north faces Cor. No. 2, C.P.C. M.S. No. 256, from which a Fir 10 inches dia bears S.31°E. 98L distant blazed and marked Cor. No. 2, C.P.C. M.S. No. 256 (B.T.)
A Spruce 13 inches dia bears S.28°45'E. 96L distant blazed and marked Cor. No. 2, C.P.C. M.S. No. 256 (B.T.)

G.L.O. DESCRIPTION: Cor. No. 2, common with cor. No. 4 of said Thompson Claim

MITCHELL'S 1969 DESCRIPTION:

DESCRIBE CORNER MONUMENT FOUND

1" pipe and old stake set in original mound of stone.

DESCRIBE BEARING TREES OR OTHER OFFICIAL ACCESSORIES FOUND

The two B.T.'s to the South, which were used for Central Placer Cl. (C.P.C.) 256 are dead and down but readable.
32" (green) fir bears West 39'
42" (green) fir bears S.65°W. 37'
Both of these are grown over.

DESCRIBE CORNER LOCATION RELATIVE TO NEAR-BY FEATURES, ALSO HOW TO REACH CORNER

Found by running North 15° West. Not N 5° west as the notes call for, from Corner #4 M.S. 252

MITCHELL'S 1980 DESCRIPTION:

DESCRIBE CORNER MONUMENT FOUND: Rotted post in md of stone

DESCRIBE BEARING TREES OR OTHER OFFICIAL ACCESSORIES FOUND

32" WF brs S83°W 39' W.H.B.
38" WF brs S47°W 37' W.H.B.
Other BT's here w/scribing but are down and out of place.

MONUMENT: DESCRIBE NEW MONUMENT SET, OR WORK DONE TO PRESERVE EXISTING MONUMENT

Set 2 ½" B.C. on 1" x 32" gal. pipe 24" deep in original hole in md of stone marked CPC C2 MS256 1980

ACCESSORIES: DESCRIBE NEW BT'S WITNESS OBJECTS ETC. ESTABLISHED, OR WORK DONE TO PRESERVE EXISTING EVIDENCE:

11" A.F. brs N50°E 25lks marked CPC2 MS256 BT
12" A.F. brs S45°E 4lks marked CPC2 MS256 BT

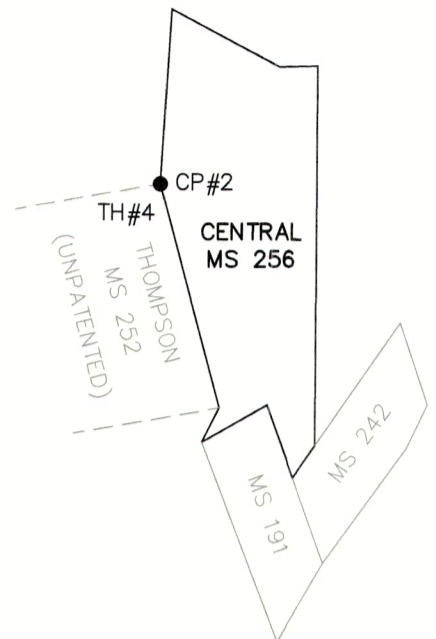
FILED September 24, 2025

BAKER COUNTY SURVEYOR

SURVEY NO. 8-37-216

RECORD OF LAND CORNER MONUMENTATION

CORNER #2 CENTRAL PLACER CLAIM, MINERAL SURVEY 256,
IDENTICAL WITH CORNER #4 THOMPSON QUARTZ CLAIM, MINERAL SURVEY 252 (UNPATENTED),
SITUATED IN SECTION 29, T. 8 S., R. 37 E., W.M.
PAGE 2 OF 2



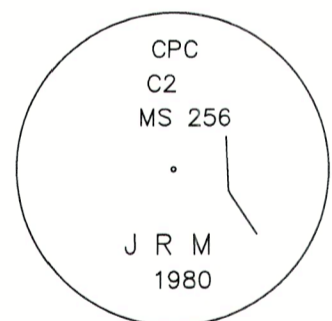
EVIDENCE FOUND: Found Mitchell's unrecorded monument, which is a 1 1/2" galvanized iron pipe with a 2 1/2" brass cap, marked as shown, projecting 1" above ground in a 3 ft. diameter mound of stone. From the found brass cap monument, I also found the following bearing trees:

- ▶ A white fir, 36" dbh, bears S.83°W., 35.8 ft., with fully healed single blaze (Original BT).
- ▶ A white fir, 47" dbh, bears S.46°W., 36.2 ft., with fully healed single blaze (Original BT).

Also found a 1 1/4" iron pipe deposited in the mound of stone. Also found the dead and down remains of both of Mitchell's bearing trees, but could find no remains of the stumps.

DESCRIPTION OF MONUMENTS AND ACCESSORIES SET AND METHODS USED: I accept Mitchell's brass cap monument as a faithful and accurate perpetuation of the original corner, being harmoniously related to the original accessory evidence, and also to other found accepted corners of Mineral Survey 256. Cap is marked as shown.

CORNER MONUMENT MARKED:



Painted a 6 inch red band around the bearing trees, and also painted the healed blazes red, and attached new USFS 54-3 and 54-9 signs. Distances measured with a steel tape to a Mag Spike driven in the side-center-right at the base of each tree, with an attached 1 1/2" aluminum washer stamped *PLS 69454*. Used RTK GPS to measure bearings. Bearings are geodetic, based on GPS observation taken at the corner. Set an aluminum guard post S.15°E., 5.6 ft., with USFS 54-2 and 54-9 signs attached. See associated Map of Survey dated August 20, 2025 for survey-related information.

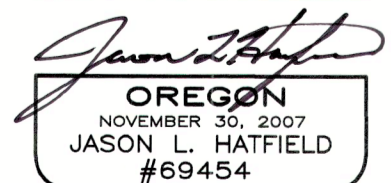
RESTORATION BY, STAMP AND DATE:

Work performed September 10, 2024
Survey completed August 20, 2025

Jason L. Hatfield, PLS

USDA FOREST SERVICE
NORTHEAST OREGON LAND ZONE
1550 Dewey Avenue, Suite A
Baker City, OR 97814
(541) 523-1283

FILED September 24, 2025
BAKER COUNTY SURVEYOR
SURVEY NO. 8-37-216



EXPIRES: 6/30/2027