

RECORD OF LAND CORNER MONUMENTATION

CORNER #2 NORTH POLE MINING CLAIM, MINERAL SURVEY 181,
IDENTICAL WITH CORNER #1 WILLIAMS QUARTZ CLAIM, MINERAL SURVEY 182A,
ALSO IDENTICAL WITH CORNER #2 NORTH STAR QUARTZ CLAIM, MINERAL SURVEY 241,
ALSO IDENTICAL WITH CORNER #4 FRITZ QUARTZ CLAIM, MINERAL SURVEY 494,
SITUATED IN SECTION 28, T. 8 S., R. 37 E., W.M.

PAGE 1 OF 2

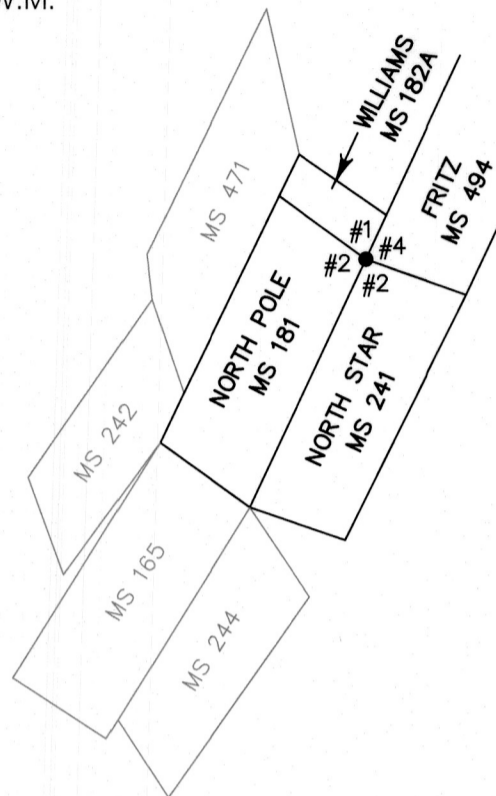
ORIGINALLY ESTABLISHED BY: Emil F. Voigt, U.S. Deputy Mineral Surveyor

MINERAL SURVEY NUMBER: 181

COMPLETION DATE: October 10, 1888

SUBSEQUENT SURVEYS:

- ▶ Mineral Survey 182 by Emil F. Voigt, U.S. Deputy Mineral Surveyor, completed October 11, 1888
- ▶ Mineral Survey 241 by Emil F. Voigt, U.S. Deputy Mineral Surveyor, completed November 2, 1891
- ▶ Mineral Survey 494 by John Hagel, U.S. Deputy Mineral Surveyor, completed July 27, 1903
- ▶ Unrecorded remonumentation by John R. Mitchell, an unlicensed Survey Technician, as documented on U.S. Forest Service corner card (undated)



ORIGINAL DESCRIPTION: To corner No. 2. Set a black pine post 5 ft lg 4 ½" square 12" in the ground marked cor No. 2 NPMC S No. 181 with a mound of stone around it from which
A black pine 20" Dia bears N.5°10'E. 22 ft dist. blazed and marked Cor No. 2 NPMC S No. 181 B.T.
A Fir tree 22" Dia bears S.15°45'E. 65.4 ft dist blazed and marked Cor No. 2 NPMC S No. 181 BT.

MINERAL SURVEY 182A DESCRIPTION: Beginning at corner No. 1 identical with corner No. 1 of location and identical with corner No. 2 of the North Pole mining claim Survey No. 181, which is a black pine post 5 ft lg 4 ½" square set 12" in the ground marked Cor No. 1 WMC S No. 182 with a mound of stone around it from which mineral monument No. 1 bears S.37°45'W. 4473 feet dist.

MINERAL SURVEY 241 DESCRIPTION: To corner No. 2, identical with old location N.W. Corner, and Cor. 2 N.P. Claim, and Cor. 1 Williams Claim, which is a post 4 ½ ft long 4 inches square set 12 inches in the ground with mound of stone, mark it on east face Cor. 2 N.S.Q.C. M.S. 241, from which
a black pine 10 inches dia bears S.42°E. 79 ft distant blazed and marked Cor. 2 NSQC MS 241 (B.T.)
a black pine 12 inches dia bears S.24°E. 84 ft distant blazed and marked Cor. 2 NSQC MS 241 (B.T.)

MINERAL SURVEY 494 DESCRIPTION: To Cor. No. 4. Identical with Cor. No. 1 of the 'Williams Lode', M. Sur. No. 182 A. Cor. No. 2 of the 'North Pole' Lode, M. Sur. No. 181, and Cor. No. 2 of the North Star Lode M. Sur. No. 241
Identical with the S.W. Cor. of the location
Found a pine post 4 in. square 4 ft. above the ground, with a mound of rocks around it, scribed Cor. No. 1 W.M.C.S. 182 C.2 N.S.Q.C. S.241- Cor. N.II N.P.M.C.S. 181 scribed it FR.Q.C.C.4-494.
No bearing objects available.

MITCHELL'S 1980 DESCRIPTION:

MONUMENT: DESCRIBE NEW MONUMENT SET, OR WORK DONE TO PRESERVE EXISTING MONUMENT
Set 2 ½" B.C. on 32" X 1" gal pipe 24" deep in original hole in md of stone marked NPC2 MS 181 1980

ACCESSORIES: DESCRIBE NEW BT'S WITNESS OBJECTS ETC. ESTABLISHED, OR WORK DONE TO PRESERVE EXISTING EVIDENCE:

9" W.F. brs S2°W 21'

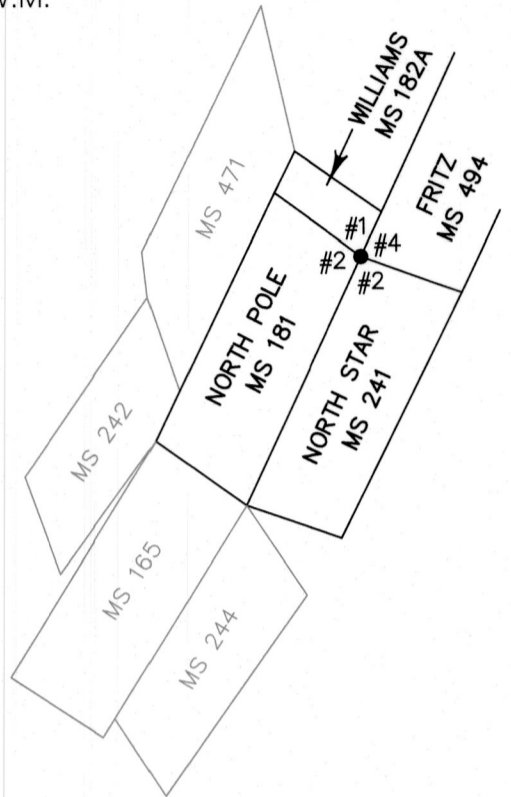
11" WF brs N40°W 30 ½' Both marked NP2 MS 181 BT

FILED September 24, 2025
BAKER COUNTY SURVEYOR
SURVEY NO. 8-37-205

RECORD OF LAND CORNER MONUMENTATION

CORNER #2 NORTH POLE MINING CLAIM, MINERAL SURVEY 181,
 IDENTICAL WITH CORNER #1 WILLIAMS QUARTZ CLAIM, MINERAL SURVEY 182A,
 ALSO IDENTICAL WITH CORNER #2 NORTH STAR QUARTZ CLAIM, MINERAL SURVEY 241,
 ALSO IDENTICAL WITH CORNER #4 FRITZ QUARTZ CLAIM, MINERAL SURVEY 494,
 SITUATED IN SECTION 28, T. 8 S., R. 37 E., W.M.

PAGE 2 OF 2



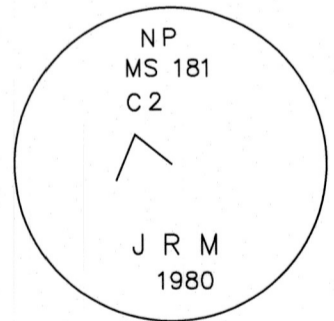
EVIDENCE FOUND: Found Mitchell's unrecorded monument, which is a 1 1/2" galvanized iron pipe with a 2 1/2" brass cap, marked as shown, which was disturbed by logging activity and leaning downhill. I reset the monument and rebuilt a 2 ft. diameter mound of stone to top of cap. From which,

- ▶ A subalpine fir, 15" dbh, bears S.01°E, 20.62 ft., with healed single blaze (Mitchell BT)
- ▶ A subalpine fir, 19" dbh, bears N.42°W., 30.25 ft., with healed single blaze (Mitchell BT)

I also searched for but found no remaining evidence of the bearing trees from MS 181 or MS 241.

DESCRIPTION OF MONUMENTS AND ACCESSORIES SET AND METHODS USED: I accept Mitchell's brass cap monument as a faithful and accurate perpetuation of the original corner, being harmoniously related to the found accessory evidence, and to other found accepted corners in the area.

CORNER MONUMENT MARKED:



Attached new USFS 54-3 and 54-9 signs. Distances measured with a steel tape to a Mag Spike driven in the side-center-right at the root crown of each tree, with an attached 1 1/2" aluminum washer stamped PLS 69454. Used RTK GPS to measure bearings. Bearings are geodetic, based on GPS observation taken at the corner. See associated Map of Survey dated August 20, 2025 for survey-related information.

RESTORATION BY, STAMP AND DATE:

Work performed October 22, 2024
 Survey completed August 20, 2025

Jason L. Hatfield, PLS
 Spencer B. Jones, Survey Technician

USDA FOREST SERVICE
 NORTHEAST OREGON LAND ZONE
 1550 Dewey Avenue, Suite A
 Baker City, OR 97814
 (541) 523-1283

FILED September 25, 2025
 BAKER COUNTY SURVEYOR
 SURVEY NO. 8-37-205

REGISTERED
 PROFESSIONAL
 LAND SURVEYOR

Jason L. Hatfield

OREGON
 NOVEMBER 30, 2007
 JASON L. HATFIELD
 #69454

EXPIRES: 6/30/2027