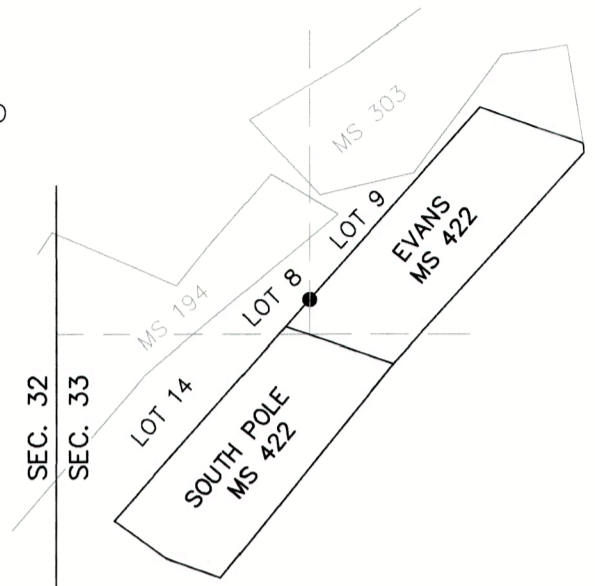


RECORD OF LAND CORNER MONUMENTATION

INTERSECTION OF NORTHWESTERLY LINE OF EVANS QUARTZ CLAIM, MINERAL SURVEY 422,
WITH THE NORTH-SOUTH CENTERLINE OF THE NW1/4 SECTION 33, T.8S., R.37E., W.M.

ORIGINALLY ESTABLISHED BY: CORNER NOT PREVIOUSLY ESTABLISHED



ORIGINAL DESCRIPTION: N/A

EVIDENCE FOUND: N/A

DESCRIPTION OF MONUMENTS AND ACCESSORIES SET AND METHODS USED:

At the intersection point, as determined by survey, I set a standard USFS 2 1/2" x 30" aluminum pipe with attached 3 1/4" aluminum cap, 26" in the ground. Built a 3 ft. diameter mound of stone around the monument to top. Cap is marked as shown below.

From which, **I SCRIBE A NEW BEARING TREE:**

- ▶ A lodgepole pine, 14" dbh, bears S.43°W., 47.58 ft. marked X in upper blaze, and BT in lower blaze.

I also **SET A NEW REFERENCE POINT:**

- ▶ A 5/8"x 30" iron pin, bears N.08°30'W., 11.59 ft., with attached 2" aluminum cap marked *RP 1 2024 PLS 69454*

CORNER MONUMENT
MARKED:



Painted a 6 inch red band around the bearing tree, and also painted the blazes red, and attached USFS 54-3 and 54-9 signs. Distance to bearing tree measured with a handheld EDM to a Mag Spike driven in the side-center-right at the root crown of the tree, with an attached 1 1/2" aluminum washer stamped *PLS 69454*. Used RTK GPS to measure the reference point. Bearings are geodetic, based on GPS observation taken at the corner. Set an aluminum guard post North, 4 ft., with USFS 54-2 and 54-9 signs attached, and another S.41°W., 4.4 ft., with USFS 54-2 sign attached. See associated Map of Survey dated September 19, 2024 for survey-related information.

RESTORATION BY, STAMP AND DATE:

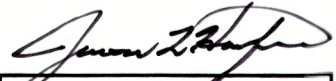
Work performed July 30, 2024
Survey completed September 19, 2024

Jason L. Hatfield, PLS
Spencer B. Jones, Survey Tech

USDA FOREST SERVICE
NORTHEAST OREGON LAND ZONE
1550 Dewey Avenue, Suite A
Baker City, OR 97814
(541) 523-1283

FILED October 24, 2024
BAKER COUNTY SURVEYOR
SURVEY NO. 8-37-200

REGISTERED
PROFESSIONAL
LAND SURVEYOR


OREGON
NOVEMBER 30, 2007
JASON L. HATFIELD
#69454

EXPIRES: 6/30/2025