

RECORD OF LAND CORNER MONUMENTATION

CORNER #2 OF THE ORAZABA CLAIM, MS 336,
SITUATED IN SECTION 31, T. 8 S., R. 37 E., W.M.

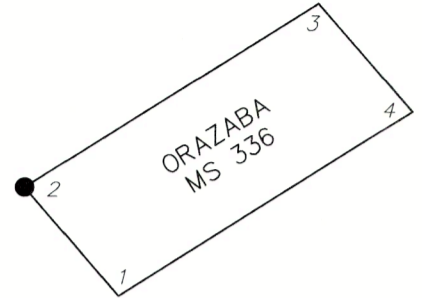
ORIGINALLY ESTABLISHED BY: Charles M. Foster, U.S. Deputy Mineral Surveyor

MINERAL SURVEY NUMBER: 336

COMPLETION DATE: July 10, 1897

SUBSEQUENT SURVEYS:

- ▶ 1924 G.L.O Retracement by Lincoln E. Wilkes, U.S. Cadastral Engineer, under Group No. 107, Approved March 15, 1924
- ▶ Unrecorded remonumentation by John R. Mitchell, an unlicensed Survey Technician, as documented on U.S Forest Service corner cards dated 9/9/1969 and 6/14/1981



ORIGINAL DESCRIPTION: A post 4½ft long 4 inches square set 12 inches in the ground with a mound of earth and stones, scribed COR NO 2-336 ORAZABA CLAIM. A black pine, 36 inches dia. bears S41°E 77 ft dist. blazed and scribed 2-336 ORAZABA CLAIM. A black pine 12 inches dia. bears N87°30'E 25 ft. blazed and scribed 2-336 ORAZABA CLAIM.

1924 G.L.O. DESCRIPTION: Cor. No. 2, bears N. 50° 05' E., 12lks. dist. Cor as described.

MITCHELL'S 1969 DESCRIPTION: DESCRIBE CORNER MONUMENT FOUND: mound of stone
DESCRIBE BEARING TREES OR OTHER OFFICIAL ACCESSORIES FOUND: 48" P.P. brs. S.41°E. 77ft. 26" P.P. bears N.87°30'E. 25ft. The scribing on the latter, grown over, but full scribing on the larger tree.

MITCHELL'S 1981 DESCRIPTION: DESCRIBE CORNER MONUMENT FOUND: rotted post in md of E & S
DESCRIBE BEARING TREES OR OTHER OFFICIAL ACCESSORIES FOUND: 45" dead pp w/ full scribing in open blaze bears S41°E, 77'. 32" gr pp brs N87½°E, 25' w/HB.
MONUMENT: DESCRIBE NEW MONUMENT SET, OR WORK DONE TO PRESERVE EXISTING MONUMENT: 2½" BC on 1"x32" gal. pipe set 24" deep in original hole & md marked ORA C2 MS 336 JRM 1981 & angle.
ACCESSORIES: DESCRIBE NEW BT's WITNESS OBJECTS ETC. ESTABLISHED, OR WORK DONE TO PRESERVE EXISTING EVIDENCE: 10" WF brs. S87°W 23' marked ORA 2 MS 336 BT.

EVIDENCE FOUND: Found Mitchell's unrecorded monument, which is a 1" galvanized iron pipe with a 2½" brass cap, marked as shown in diagram, projecting 8" above ground in an embedded 2ft diam. collar of stone .

- ▶ A ponderosa pine, 31" dbh, bears N.88°E., 25.3 ft., with healed blaze in good condition.
- ▶ Rotted remains, bears S.41°E., 77ft, dead & down with remnants of scribing.
- ▶ A white fir snag, 14" dbh, bears S.87°W., 23.5 ft., with a healed blaze.

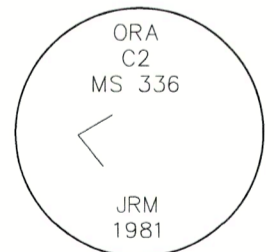
DESCRIPTION OF MONUMENTS AND ACCESSORIES SET AND METHODS USED:

I accept the brass capped monument as the best available evidence of the original corner.

From which, **I SCRIBE A NEW BEARING TREE:**

- ▶ A grand fir, 9" dbh, bears S.12°W., 13.9 ft., scribed X in upper blaze and BT in lower blaze. Placed a ¾" brass washer stamped PLS 91693 between the B and T.

CORNER MONUMENT
MARKED:



Painted a 6 inch red band around each bearing tree, and also painted blazes red and attached USFS 54-3 and 54-9 signs. Bearings were measured with a handheld compass with a 14° East declination. Distance to bearing trees was measured with a steel tape. The new BT was measured to a 60d nail driven in the right-side-center above the root crown.

RESTORATION BY, STAMP AND DATE:

Work Performed September 28, 2023 by:

Robert C. Moyers, PLS
Spencer B. Jones

USDA FOREST SERVICE
NORTHEAST OREGON LAND ZONE
1550 Dewey Avenue, Suite A
Baker City, OR 97814
(541) 523-1281

FILED August 7, 2024
BAKER COUNTY SURVEYOR
SURVEY NO. 8-37-188

REGISTERED
PROFESSIONAL
LAND SURVEYOR

OREGON
SEPTEMBER 11, 2018
ROBERT C. MOYERS
#91693

RENEWS: 12/31/2024