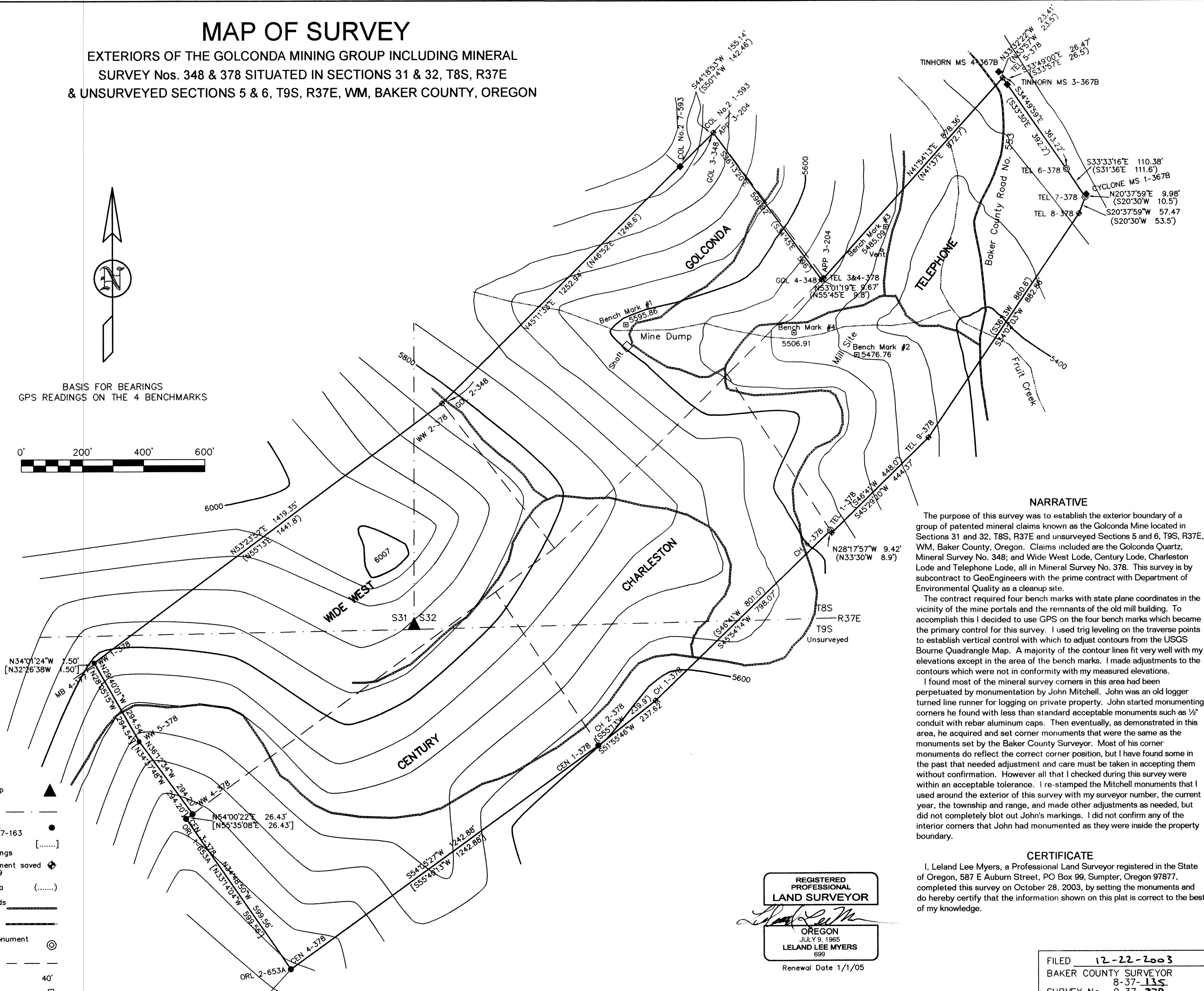
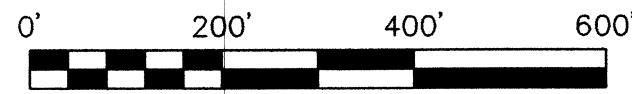


MAP OF SURVEY

EXTERIORS OF THE GOLCONDA MINING GROUP INCLUDING MINERAL
SURVEY Nos. 348 & 378 SITUATED IN SECTIONS 31 & 32, T8S, R37E
& UNSURVEYED SECTIONS 5 & 6, T9S, R37E, WM, BAKER COUNTY, OREGON



BASIS FOR BEARINGS
GPS READINGS ON THE 4 BENCHMARKS



LEGEND

- Found 1924 GLO Brass Cap on 2" Galvanized Pipe ▲
- Approx. Section Line ---
- Bill Hanley monuments set by 1987 Survey No. 9-37-163 ●
- Hanley Calls adjusted for different Basis for Bearings [.....]
- Found John Mitchell Monument saved and Restamped PLS 699 ◆
- Mineral Survey Record Data (.....)
- Old Mining & Logging Roads currently impassible ---
- Baker County Road ---
- Set 30" x 1" Galv. Pipe Monument with 2 1/2" Brass Cap ⊙
- Approx MS Claim Lines ---
- Contour Interval 40'
- Bench Mark □

NARRATIVE

The purpose of this survey was to establish the exterior boundary of a group of patented mineral claims known as the Golconda Mine located in Sections 31 and 32, T8S, R37E and unsurveyed Sections 5 and 6, T9S, R37E, WM, Baker County, Oregon. Claims included are the Golconda Quartz, Mineral Survey No. 348; and Wide West Lode, Century Lode, Charleston Lode and Telephone Lode, all in Mineral Survey No. 378. This survey is by subcontract to GeoEngineers with the prime contract with Department of Environmental Quality as a cleanup site.

The contract required four bench marks with state plane coordinates in the vicinity of the mine portals and the remnants of the old mill building. To accomplish this I decided to use GPS on the four bench marks which became the primary control for this survey. I used trig leveling on the traverse points to establish vertical control with which to adjust contours from the USGS Bourne Quadrangle Map. A majority of the contour lines fit very well with my elevations except in the area of the bench marks. I made adjustments to the contours which were not in conformity with my measured elevations.

I found most of the mineral survey corners in this area had been perpetuated by monumentation by John Mitchell. John was an old logger turned line runner for logging on private property. John started monumenting corners he found with less than standard acceptable monuments such as 1/2" conduit with rebar aluminum caps. Then eventually, as demonstrated in this area, he acquired and set corner monuments that were the same as the monuments set by the Baker County Surveyor. Most of his corner monuments do reflect the correct corner position, but I have found some in the past that needed adjustment and care must be taken in accepting them without confirmation. However all that I checked during this survey were within an acceptable tolerance. I re-stamped the Mitchell monuments that I used around the exterior of this survey with my surveyor number, the current year, the township and range, and made other adjustments as needed, but did not completely blot out John's markings. I did not confirm any of the interior corners that John had monumented as they were inside the property boundary.

CERTIFICATE

I, Leland Lee Myers, a Professional Land Surveyor registered in the State of Oregon, 587 E Auburn Street, PO Box 99, Sumpter, Oregon 97877, completed this survey on October 28, 2003, by setting the monuments and do hereby certify that the information shown on this plat is correct to the best of my knowledge.

REGISTERED
PROFESSIONAL
LAND SURVEYOR

OREGON
JULY 9, 1965
LELAND LEE MYERS
699

Renewal Date 1/1/05

FILED 12-22-2003
BAKER COUNTY SURVEYOR
8-37-135
SURVEY No. 9-37-219