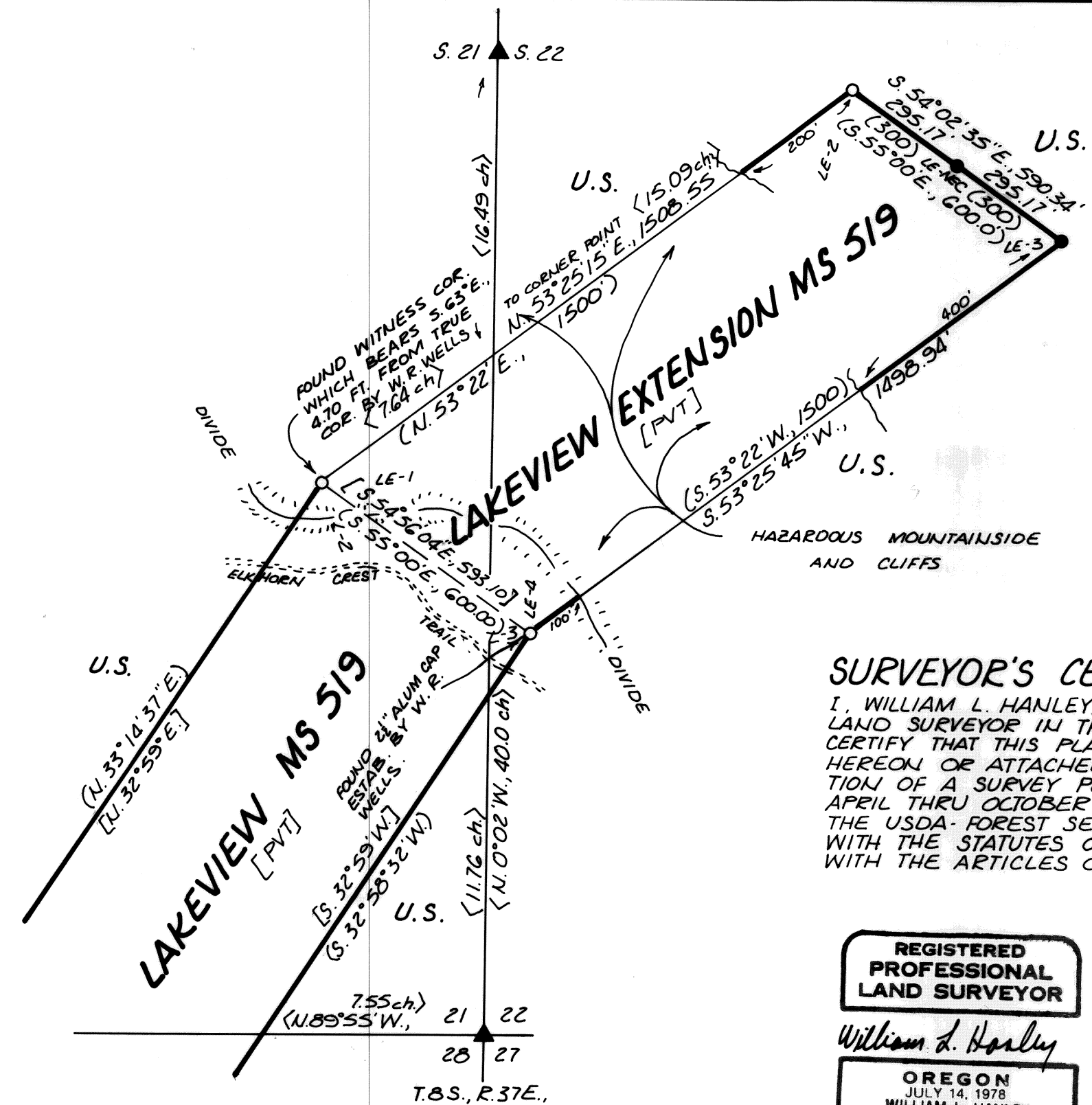
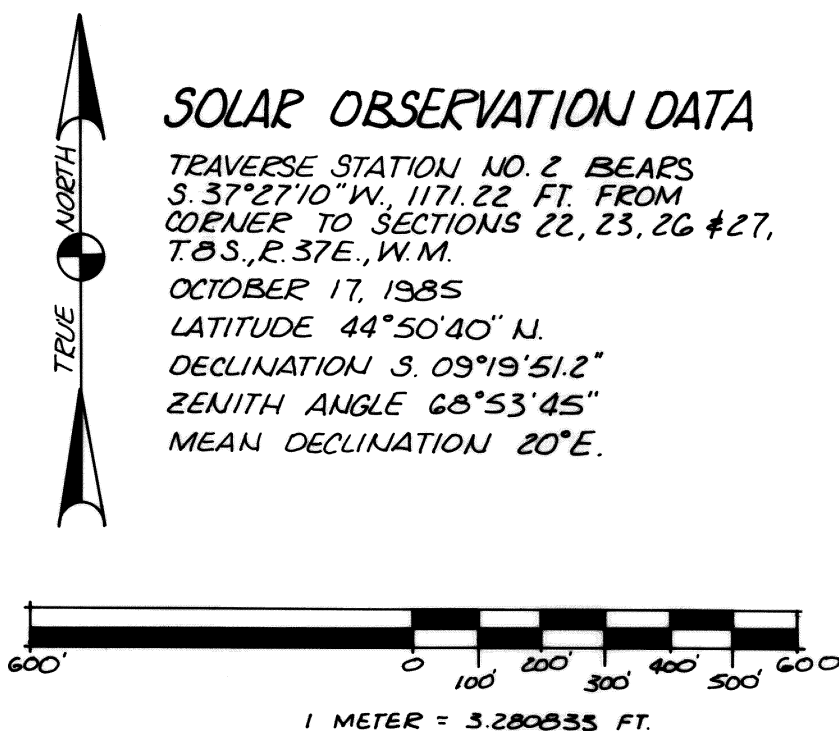


SURVEYED BY WILLIAM L. HANLEY, DBA  
 BILL HANLEY SURVEYING CO.  
 P.O. BOX 824  
 BAKER, ORE. 97814  
 (503) 523-4325

**SOLAR OBSERVATION DATA**

TRAVERSE STATION NO. 2 BEARS  
 S. 37° 27' 10" W., 1171.22 FT. FROM  
 CORNER TO SECTIONS 22, 23, 26 & 27,  
 T. 8 S., R. 37 E., W. M.  
 OCTOBER 17, 1985  
 LATITUDE 44° 50' 40" N.  
 DECLINATION S. 09° 19' 51.2"  
 ZENITH ANGLE 68° 53' 45"  
 MEAN DECLINATION 20° E.



**SURVEYOR'S CERTIFICATION**

I, WILLIAM L. HANLEY, A REGISTERED PROFESSIONAL LAND SURVEYOR IN THE STATE OF OREGON, HEREBY CERTIFY THAT THIS PLAT AND THE NOTES CONTAINED HEREON OR ATTACHED ARE A CORRECT REPRESENTATION OF A SURVEY PERFORMED BY ME FROM APRIL THRU OCTOBER, 1985, AT THE REQUEST OF THE USDA-FOREST SERVICE, IN FULL ACCORDANCE WITH THE STATUTES OF THE STATE OF OREGON AND WITH THE ARTICLES OF MY CONTRACT.

*William L. Hanley*  
 ORLS 1639



FILED 3-6-84  
 BAKER COUNTY SURVEYOR  
 SURVEY NO. 8-37-95

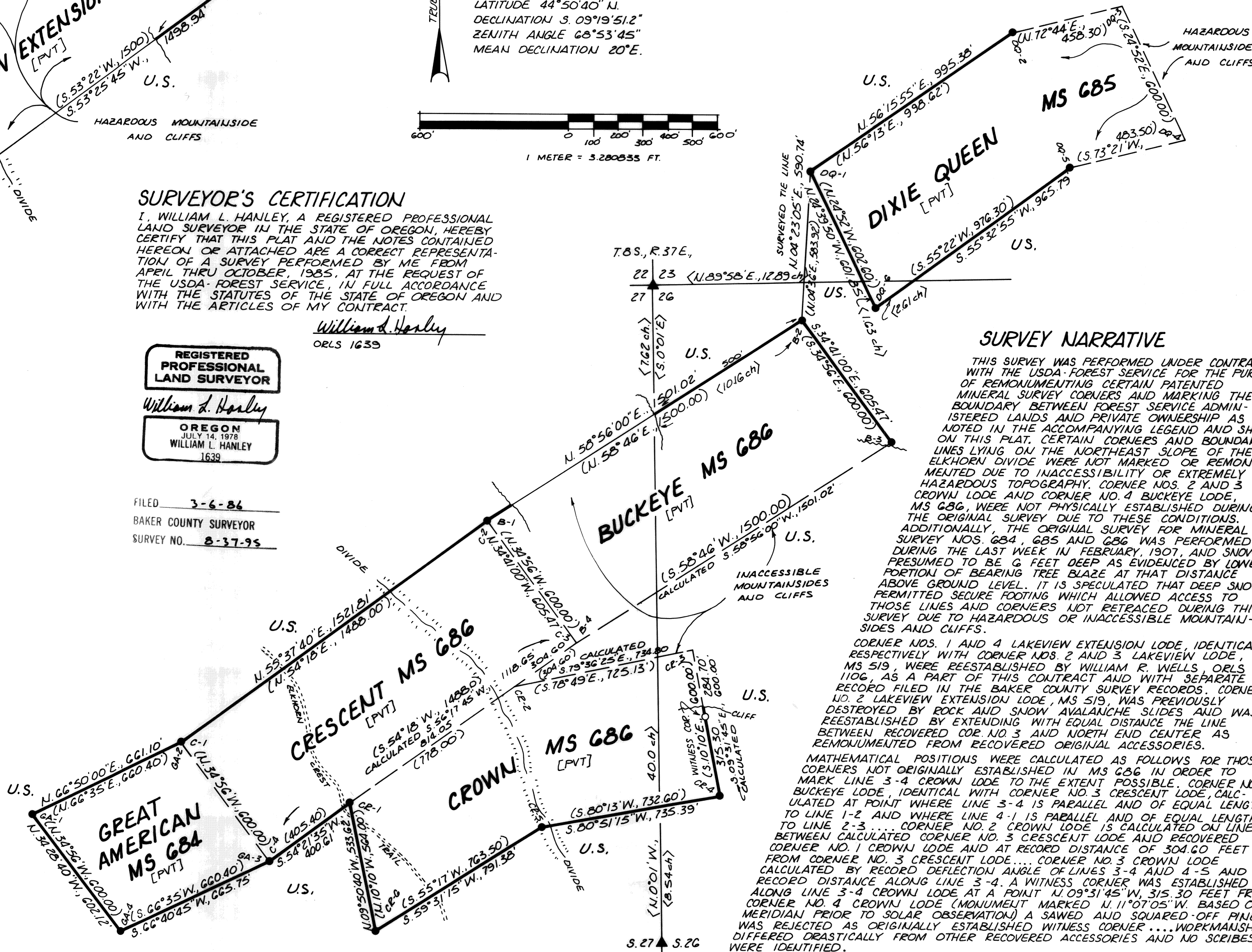
**LEGEND**

- SET 2 1/2" ALUMINUM CAP ON 2" DIAM. ALUMINUM PIPE, 30" LONG, AT POSITION ESTABLISHED FROM RECOVERED ORIGINAL EVIDENCE
- SET TYPICAL 2 1/2" ALUMINUM CAP AT CALCULATED CORNER POSITION, UNLESS OTHERWISE NOTED.
- ▲ ROUND GLO BRASS CAP ESTABLISHED IN 1924 BY LINCOLN E. WILKES, U.S. CADASTRAL ENGINEER, AND MAINTAINED CORNER MONUMENT AND ACCESSORIES TO USFS STANDARDS.
- ( ) RECORD OF RETRACEMENT SURVEY PERFORMED BY WILLIAM R. WELLS, ORLS 1106, AS A PART OF THIS CONTRACT AND ON FILE IN THE BAKER COUNTY SURVEY RECORDS.
- [ ] RECORD OF U.S. MINERAL SURVEY NOS. 684, 685 AND 686, PERFORMED BY WILLIAM W. ELMER, AND U.S. MINERAL SURVEY NO. 519, PERFORMED BY CHARLES M. FOSTER, BOTH U.S. DEPUTY MINERAL SURVEYORS.
- < > RECORD OF SURVEY OF SUBDIVISIONAL LINES AND RETRACEMENTS OF BOUNDARIES OF MINERAL CLAIMS IN T. 8 S., R. 37 E., W. M., PERFORMED BY LINCOLN E. WILKES, U.S. CADASTRAL ENGINEER, UNDER SPECIAL INSTRUCTIONS DATED SEPT. 24, 1923, INCLUDED IN GROUP 107.
- NATIONAL FOREST BOUNDARY MARKED WITH 6-FOOT STEEL FENCE POSTS AND BOUNDARY SIGNS 54-2 ATTACHED AND SPACED 250' APART.

**NOTES**

FOR RECORD OF CORNER MONUMENTATION SEE CERTIFIED RECORD OF LAND CORNER MONUMENTATION SHEETS FILED SEPARATELY.

FIELD BOOK REFERENCE  
 WINDY TRAVERSE BOOKS #3 & #4  
 WINDY MONUMENTATION BOOK #2



**SURVEY NARRATIVE**

THIS SURVEY WAS PERFORMED UNDER CONTRACT WITH THE USDA-FOREST SERVICE FOR THE PURPOSE OF REMONUMENTING CERTAIN PATENTED MINERAL SURVEY CORNERS AND MARKING THE BOUNDARY BETWEEN FOREST SERVICE ADMINISTERED LANDS AND PRIVATE OWNERSHIP AS NOTED IN THE ACCOMPANYING LEGEND AND SHOWN ON THIS PLAT. CERTAIN CORNERS AND BOUNDARY LINES LYING ON THE NORTHEAST SLOPE OF THE ELKHORN DIVIDE WERE NOT MARKED OR REMONUMENTED DUE TO INACCESSIBILITY OR EXTREMELY HAZARDOUS TOPOGRAPHY. CORNER NOS. 2 AND 3 CROWN LODE AND CORNER NO. 4 BUCKEYE LODE, MS 686, WERE NOT PHYSICALLY ESTABLISHED DURING THE ORIGINAL SURVEY DUE TO THESE CONDITIONS. ADDITIONALLY, THE ORIGINAL SURVEY FOR MINERAL SURVEY NOS. 684, 685 AND 686 WAS PERFORMED DURING THE LAST WEEK IN FEBRUARY, 1907, AND SNOW PRESUMED TO BE 6 FEET DEEP AS EVIDENCED BY LOWEST PORTION OF BEARING TREE BLAZE AT THAT DISTANCE ABOVE GROUND LEVEL. IT IS SPECULATED THAT DEEP SNOW PERMITTED SECURE FOOTING WHICH ALLOWED ACCESS TO THOSE LINES AND CORNERS NOT RETRACED DURING THIS SURVEY DUE TO HAZARDOUS OR INACCESSIBLE MOUNTAIN-SIDES AND CLIFFS.

CORNER NOS. 1 AND 4 LAKEVIEW EXTENSION LODE, IDENTICAL RESPECTIVELY WITH CORNER NOS. 2 AND 3 LAKEVIEW LODE, MS 519, WERE REESTABLISHED BY WILLIAM R. WELLS, ORLS 1106, AS A PART OF THIS CONTRACT AND WITH SEPARATE RECORD FILED IN THE BAKER COUNTY SURVEY RECORDS. CORNER NO. 2 LAKEVIEW EXTENSION LODE, MS 519, WAS PREVIOUSLY DESTROYED BY ROCK AND SNOW AVALANCHE SLIDES AND WAS REESTABLISHED BY EXTENDING WITH EQUAL DISTANCE THE LINE BETWEEN RECOVERED COR. NO. 3 AND NORTH END CENTER AS REMONUMENTED FROM RECOVERED ORIGINAL ACCESSORIES.

MATHEMATICAL POSITIONS WERE CALCULATED AS FOLLOWS FOR THOSE CORNERS NOT ORIGINALLY ESTABLISHED IN MS 686 IN ORDER TO MARK LINE 3-4 CROWN LODE TO THE EXTENT POSSIBLE. CORNER NO. 4 BUCKEYE LODE, IDENTICAL WITH CORNER NO. 3 CRESCENT LODE, CALCULATED AT POINT WHERE LINE 3-4 IS PARALLEL AND OF EQUAL LENGTH TO LINE 1-2 AND WHERE LINE 4-1 IS PARALLEL AND OF EQUAL LENGTH TO LINE 2-3. CORNER NO. 2 CROWN LODE IS CALCULATED ON LINE BETWEEN CALCULATED CORNER NO. 3 CRESCENT LODE AND RECOVERED CORNER NO. 1 CROWN LODE AND AT RECORD DISTANCE OF 304.60 FEET FROM CORNER NO. 3 CRESCENT LODE. CORNER NO. 3 CROWN LODE WAS CALCULATED BY RECORD DEFLECTION ANGLE OF LINES 3-4 AND 4-5 AND RECORD DISTANCE ALONG LINE 3-4. A WITNESS CORNER WAS ESTABLISHED ALONG LINE 3-4 CROWN LODE AT A POINT N. 09° 31' 45" W., 315.30 FEET FROM CORNER NO. 4 CROWN LODE (MONUMENT MARKED N. 11° 07' 05" W. BASED ON MERIDIAN PRIOR TO SOLAR OBSERVATION) A SAWED AND SQUARED-OFF PINE WAS REJECTED AS ORIGINALLY ESTABLISHED WITNESS CORNER. WORKMANSHIP DIFFERED DRASTICALLY FROM OTHER RECOVERED ACCESSORIES AND NO SCRIBES WERE IDENTIFIED.

THIS SURVEY WAS PERFORMED WITH A 6-SECOND THEODOLITE AND ELECTRONIC DISTANCE METER CONTAINED IN SINGLE UNIT TOTAL STATION. CORNER POSITIONS ESTABLISHED BY SURVEY WERE PERFORMED WITH A 6-SECOND THEODOLITE AND 200-FOOT STEEL TAPE. MEASUREMENTS TO CORNER ACCESSORIES WERE TAKEN WITH 60-MINUTE STAFF COMPASS WITH 3-INCH NEEDLE AND 200-FOOT STEEL TAPE. ALL SURVEY CONTROL DATA OBTAINED FROM CLOSED-LOOP BOUNDARY TRAVERSE. BOUNDARY ESTABLISHED BY OFFSET MEASUREMENT FROM SURVEY CONTROL.

**RECORD OF SURVEY PLAT**  
**WINDY CADASTRAL SURVEY**

USDA-FOREST SERVICE CONTRACT NO. 53-O4M3-4-3017

Surveyed Sept. 09 to Oct. 30, 1985

Scale 1"=300'