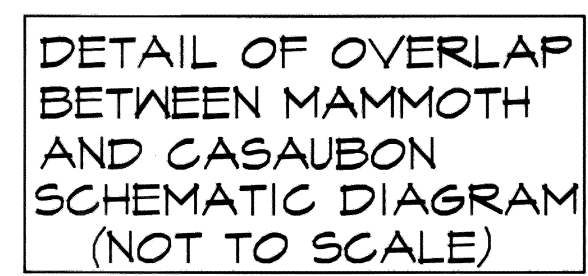
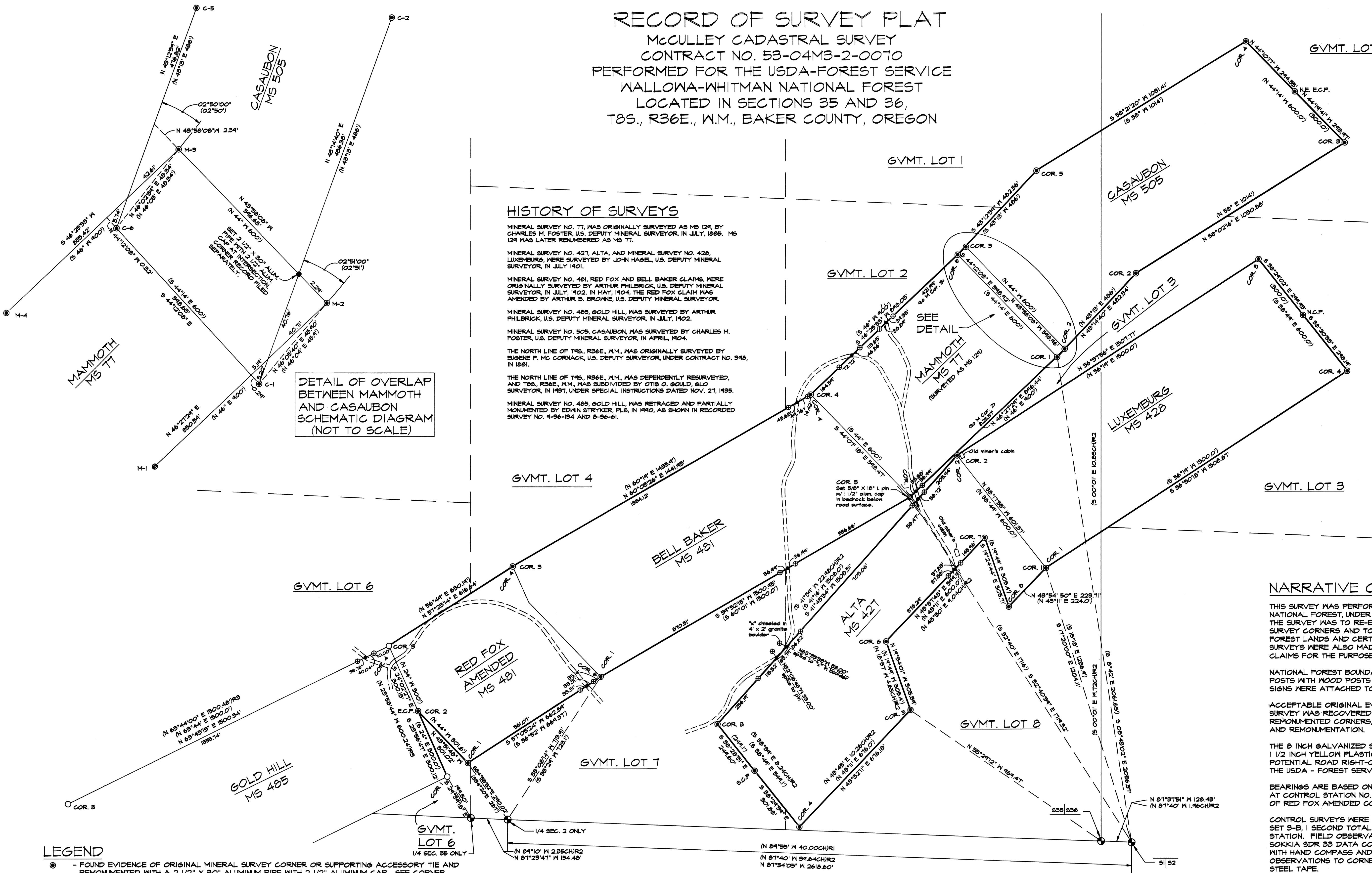
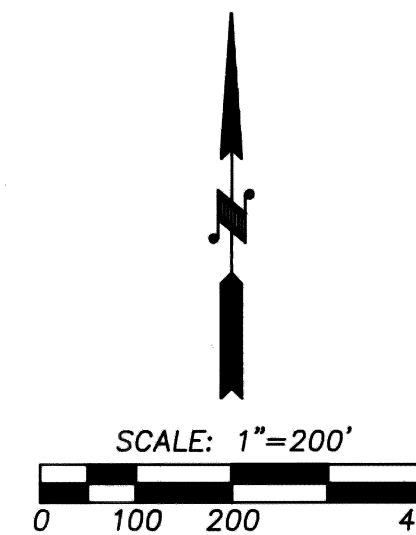


RECORD OF SURVEY PLAT

McCULLY CADASTRAL SURVEY CONTRACT NO. 53-04MB-2-0070 PERFORMED FOR THE USDA-FOREST SERVICE WALLOWA-WHITMAN NATIONAL FOREST LOCATED IN SECTIONS 35 AND 36, T8S., R36E., W.M., BAKER COUNTY, OREGON



HISTORY OF SURVEYS

MINERAL SURVEY NO. 77, WAS ORIGINALLY SURVEYED AS MS 124, BY CHARLES M. FOSTER, U.S. DEPUTY MINERAL SURVEYOR, IN JULY, 1885. MS 124 WAS LATER RENUMBERED AS MS 77.

MINERAL SURVEY NO. 421, ALTA, AND MINERAL SURVEY NO. 428, LUXEMBURG, WERE SURVEYED BY JOHN HASEL, U.S. DEPUTY MINERAL SURVEYOR, IN JULY 1891.

MINERAL SURVEY NO. 481, RED FOX AND BELL BAKER CLAIMS, WERE ORIGINALLY SURVEYED BY ARTHUR PHILBRICK, U.S. DEPUTY MINERAL SURVEYOR, IN JULY, 1902. IN MAY, 1904, THE RED FOX CLAIM WAS AMENDED BY ARTHUR B. BROWNE, U.S. DEPUTY MINERAL SURVEYOR.

MINERAL SURVEY NO. 485, GOLD HILL, WAS SURVEYED BY ARTHUR PHILBRICK, U.S. DEPUTY MINERAL SURVEYOR, IN JULY, 1902.

MINERAL SURVEY NO. 505, CASaubON, WAS SURVEYED BY CHARLES M. FOSTER, U.S. DEPUTY MINERAL SURVEYOR, IN APRIL, 1904.

THE NORTH LINE OF T8S., R36E., W.M., WAS ORIGINALLY SURVEYED BY EUGENE P. McCORNACK, U.S. DEPUTY SURVEYOR, UNDER CONTRACT NO. 348, IN 1881.

THE NORTH LINE OF T8S., R36E., W.M., WAS REPENDENTLY RESURVEYED, AND T8S., R36E., W.M., WAS SUBDIVIDED BY OTIS O. GOULD, SLO SURVEYOR, IN 1931, UNDER SPECIAL INSTRUCTIONS DATED NOV. 27, 1935.

MINERAL SURVEY NO. 485, GOLD HILL, WAS RETRACED AND PARTIALLY MONUMENTED BY EDWIN STRYKER, PLS, IN 1990, AS SHOWN IN RECORDED SURVEY NO. 8-36-134 AND 8-36-61.

NARRATIVE OF SURVEY

THIS SURVEY WAS PERFORMED AT THE REQUEST OF THE WALLOWA-WHITMAN NATIONAL FOREST, UNDER CONTRACT NO. 53-04MB-2-0070. THE PURPOSE OF THE SURVEY WAS TO RE-ESTABLISH AND OR REMONUMENT CERTAIN MINERAL SURVEY CORNERS AND TO POST THE COMMON BOUNDARY BETWEEN NATIONAL FOREST LANDS AND CERTAIN PATENTED MINERAL SURVEY BOUNDARIES. SURVEYS WERE ALSO MADE OF CERTAIN EXISTING ROADS THROUGH PATENTED CLAIMS FOR THE PURPOSE OF RIGHT-OF-WAY ACQUISITION.

NATIONAL FOREST BOUNDARIES WERE POSTED WITH 6 FOOT STEEL FENCE POSTS WITH WOOD POSTS AT ROAD CROSSINGS. NATIONAL FOREST BOUNDARY SIGNS WERE ATTACHED TO THE POSTS.

ACCEPTABLE ORIGINAL EVIDENCE OF ALL CORNERS REQUIRED FOR THIS SURVEY WAS RECOVERED. CORNER CERTIFICATES, FILED SEPARATELY FOR REMONUMENT CORNERS, DOCUMENT EVIDENCE USED IN CORNER POSITIONING AND REMONUMENTATION.

THE 8 INCH GALVANIZED SPIKES AND 5/8 INCH BY 30 INCH IRON PINS WITH 1 1/2 INCH YELLOW PLASTIC CAPS WERE SET TO DENOTE POINTS ON A POTENTIAL ROAD RIGHT-OF-WAY TO BE ACQUIRED THROUGH PRIVATE LANDS BY THE USDA - FOREST SERVICE.

BEARINGS ARE BASED ON A SOLAR OBSERVATION (ALTITUDE METHOD), TAKEN AT CONTROL STATION NO. 17, LOCATED APPROXIMATELY 180 FEET SOUTHEAST OF RED FOX AMENDED CORNER NO. 3, MS 481.

CONTROL SURVEYS WERE MADE BY RANDOM CLOSED TRAVERSE WITH A LEITZ SET 3-B, 1 SECOND TOTAL STATION AND SOKKIA SET 4, 5 SECOND TOTAL STATION. FIELD OBSERVATIONS WERE COLLECTED WITH LIETZ SDR 22 AND SOKKIA SDR 33 DATA COLLECTORS. OFFSETS TO POSTED LINE WERE MADE WITH HAND COMPASS AND STEEL TAPE FROM CONTROL AND POSTING POINTS. OBSERVATIONS TO CORNER ACCESSORIES WERE MADE WITH STAFF COMPASS AND STEEL TAPE.

- ### LEGEND
- ⊙ - FOUND EVIDENCE OF ORIGINAL MINERAL SURVEY CORNER OR SUPPORTING ACCESSORY TIE AND REMONUMENTED WITH A 2 1/2" X 30" ALUMINUM PIPE WITH 2 1/2" ALUMINUM CAP. SEE CORNER RECORD FILED SEPARATELY.
 - ⊕ - FOUND A 2 1/2" BRASS CAP ON A 2" GALV. IRON PIPE MONUMENT FROM GLO SURVEY BY OTIS O. GOULD IN 1931.
 - - FOUND A 2 1/2" ALUM. PIPE WITH A 2 1/2" ALUM. CAP MONUMENT FROM SURVEY NO. 8-36-61 & 9-36-134 BY EDWIN STRYKER IN 1990.
 - - SET 8" LONG GALV. SPIKE IN ROAD CENTERLINE.
 - ⊖ - SET 5/8" BY 30" IRON PIN WITH 1 1/2" YELLOW PLASTIC CAP MARKED "W.R. WELLS, PLS1106".
 - - BOUNDARY POSTED WITH 6 FOOT STEEL OR WOOD FENCE POSTS.
 - (XOX) - RECORD FROM ORIGINAL MINERAL SURVEY.
 - (XOX)R1 - RECORD FROM TOWNSHIP EXTERIOR SURVEY BY EUGENE P. McCORNACK, CONTRACT NO. 348.
 - (XOX)R2 - RECORD FROM SURVEY AND SUBDIVISION OF T8S., R36E., W.M., BY OTIS O. GOULD, UNDER GROUP 174 INSTRUCTIONS DATED NOVEMBER 27, 1935.
 - (XOX)R3 - RECORD FROM BAKER COUNTY SURVEY NO. 8-36-61 & 9-36-134, BY EDWIN STRYKER.

EXAMINED AND ACCEPTED FOR THE U.S. FOREST SERVICE THIS 4th DAY OF MARCH, 1993.

Jasper M. Jones, COR.

I CERTIFY THAT THIS SURVEY WAS PERFORMED AT THE REQUEST OF THE WALLOWA-WHITMAN NATIONAL FOREST.

Wm. R. Wells, NATIONAL FOREST SUPERVISOR

DATE 3/3/93

SURVEYOR'S CERTIFICATE

I, WILLIAM R. WELLS, A REGISTERED PROFESSIONAL LAND SURVEYOR IN THE STATE OF OREGON, DO HEREBY CERTIFY THAT THIS PLAT, AND THE CORNER RECORDS FILED SEPARATELY, ARE A CORRECT REPRESENTATION OF A SURVEY PERFORMED BY ME DURING THE MONTH OF SEPTEMBER 1992, AT THE REQUEST OF THE USDA, FOREST SERVICE, AND IN CONFORMANCE WITH MY CONTRACT.

THIS CERTIFICATION APPLIES TO THIS PLAT, AND THE CORNER RECORDS FILED SEPARATELY.

REGISTERED PROFESSIONAL LAND SURVEYOR

William R. Wells

WILLIAM R. WELLS, PLS
OREGON LICENSE NO. 1106

WILLIAM R. WELLS, PLS 357 N.E. HWY. 11 P.O. BOX 1696 PENDLETON, OR 97801 PHONE: (503) 276-6362	PROJECT: McCULLY CADASTRAL SURVEY CONTRACT NO. 53-04MB-2-0070
DATE: 4-25-92 CK. BY: WRW	DR. BY: MEQ NO: 42-148