

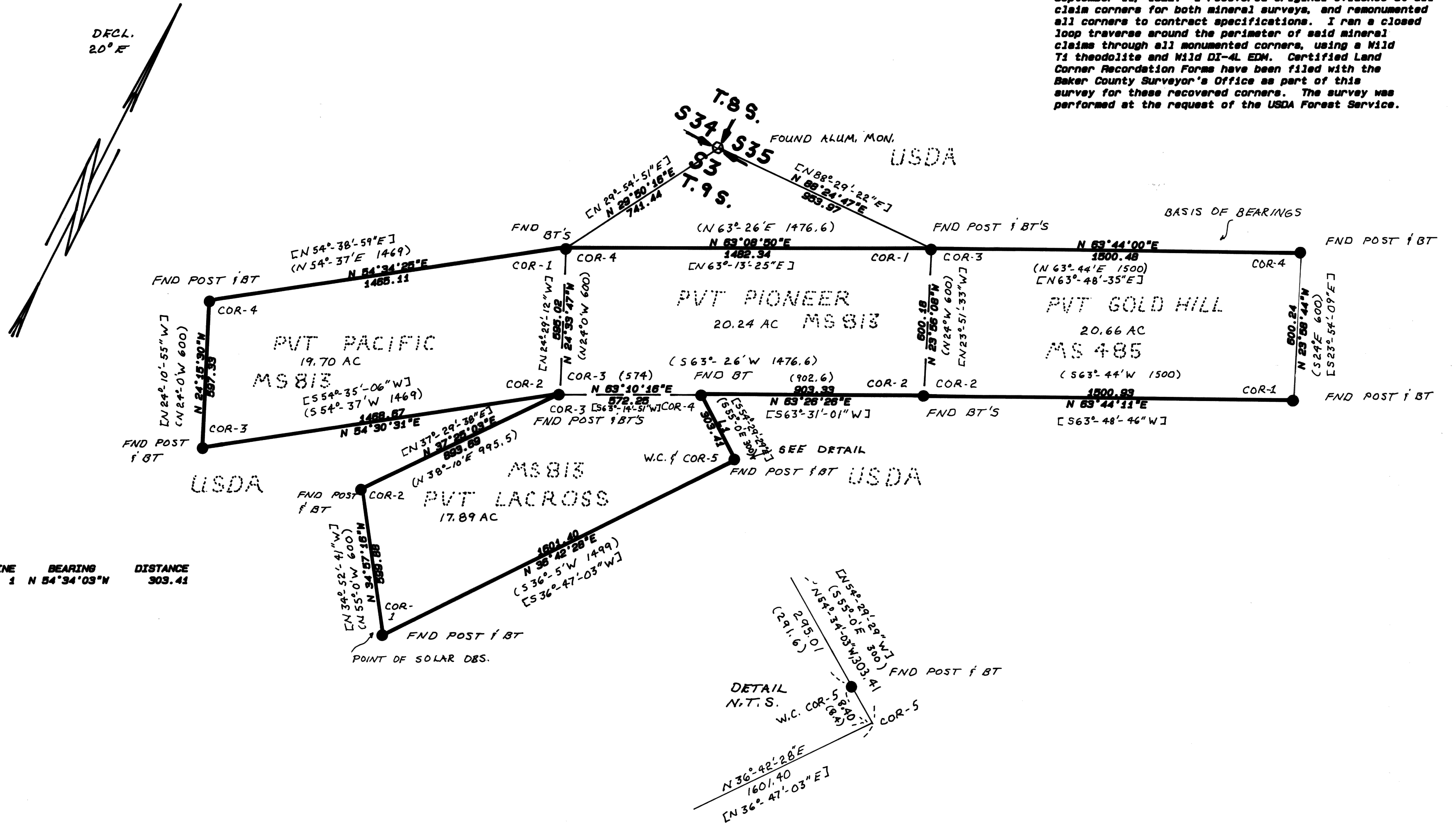
R.O.S. MS 485 & MS 813

HISTORY OF SURVEYS-NARRATIVE

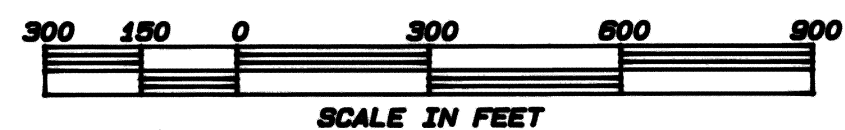
BASIS OF BEARINGS
MINERAL SURVEY NO. 485
BETWEEN CORNERS 3 AND 4

WITHIN
SEC. 35, T.8S., and SEC. 2 & 3, T.9S., R.36E., W.M.

Arthur Philbrick, U.S. Deputy Mineral Surveyor, under Mineral Survey No. 485, surveyed the Peter D. Estes and Joseph D. Young mineral claim, known as the Gold Hill Lode Mining Claim in July 1902. The survey was accepted by the Surveyor General's Office in November, 1902. William N. Elmer, U.S. Deputy Mineral Surveyor, under Mineral Survey No. 813, surveyed the Elizabeth Dahl claim, known as the Pioneer, Pacific, and LaCross Lodes, in June and July, 1922. Mineral Survey No. 813 was accepted by the U.S. Surveyor General's Office on September 11, 1922. I recovered original evidence at all claim corners for both mineral surveys, and remonumented all corners to contract specifications. I ran a closed loop traverse around the perimeter of said mineral claims through all monumented corners, using a Wild T1 theodolite and Wild DI-4L EDM. Certified Land Corner Recordation Forms have been filed with the Baker County Surveyor's Office as part of this survey for these recovered corners. The survey was performed at the request of the USDA Forest Service.



LINE BEARING DISTANCE
1 N 54° 34' 03" N 303.41



FILED 11-16-1990
BAKER COUNTY SURVEYOR
SURVEY NO. 9-36-134
8-36-61

LEGEND

- FOUND MONUMENT OF RECORD
- SET 2.5 BY 30 INCH ALUM. MONUMENT
- PROPERTY LINE ESTABLISHED AND POSTED
- (**)** SURVEY DATA OF RECORD
- [°-'-"] BEARING BY SOLAR OBSERVATION

DOWNIE CADASTRAL SURVEY

CONTRACT NO.: 04M3-9-6056

REGISTERED PROFESSIONAL LAND SURVEYOR
Edwin A. Stryker
OREGON JULY 15, 1983
EDWIN A. STRYKER
2960

STRYKER-KIMBELL ASSOCIATES

6791B HUNTER ROAD
SUMMERVILLE, ORE 97876
(503) 534-6905

DRAWN HP7578A	JOB NO 0889030936	DATED 8-28-90
CHECKED BY EAS	SCALE 1 in. = 300	SHEET 3 OF 5