

R.O.S. MORNING STAR CLAIM

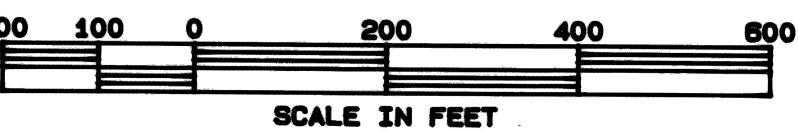
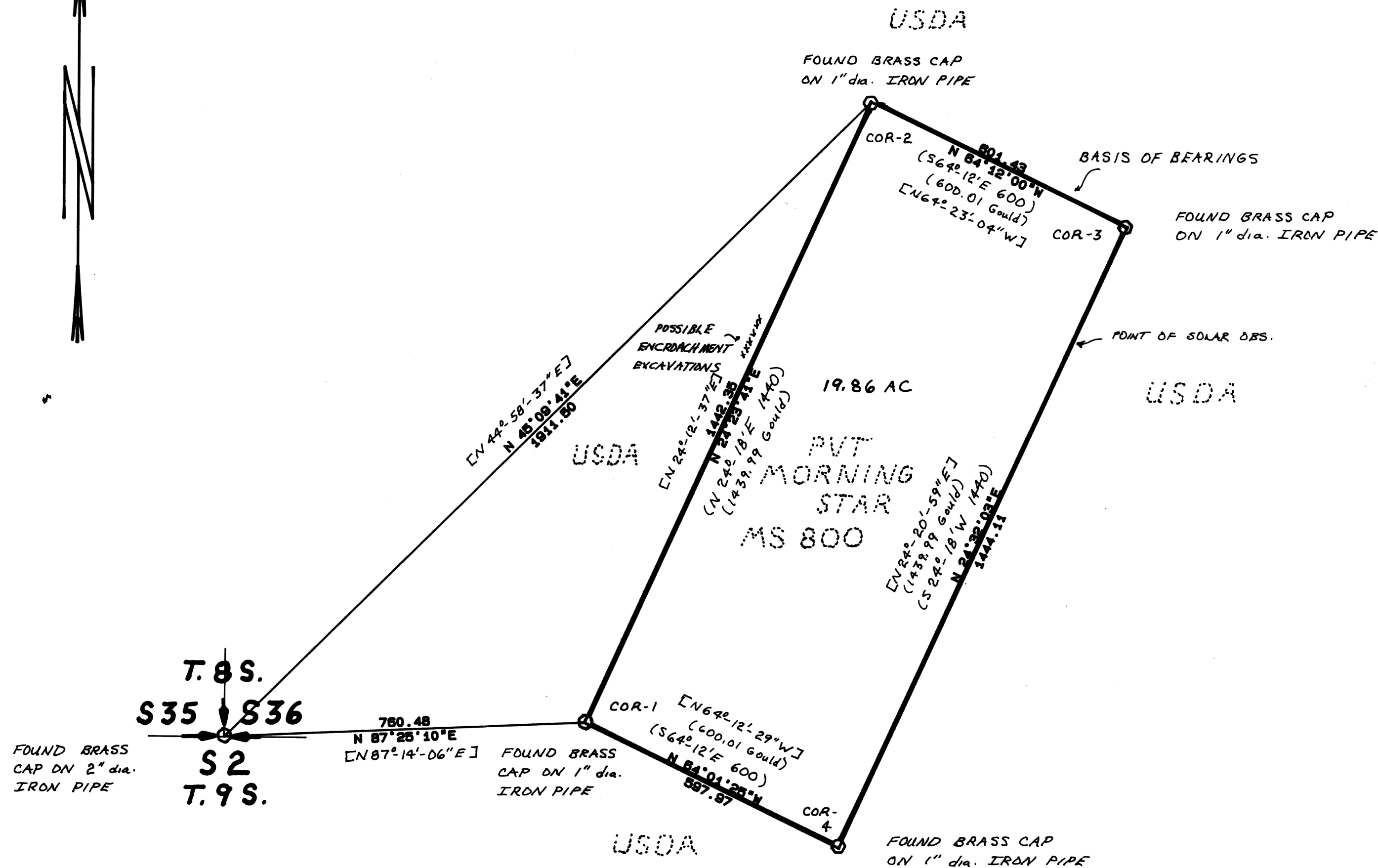
WITHIN
SEC. 36, T.8S., and SEC. 1, T.9S., R.36E., W.M.

HISTORY OF SURVEYS-NARRATIVE

Ira L. Hoffman, U.S. Deputy Mineral Surveyor, under Mineral Survey No. 800, surveyed the Richard Woods mineral claim known as the MORNING STAR MINING CLAIM in October, 1917, and completed in September, 1918. The survey was accepted by the Surveyor General's Office in November, 1918. Otis O. Gould, U.S. Deputy Surveyor, performed a dependent re-survey under instructions dated November 1935, and completed in July, 1937. The Gould resurvey was accepted in December, 1938. I recovered all four corners as remonumented by Gould in 1937. My survey was a closed loop survey along the boundary of the Morning Star claim through the four recovered monuments, using a MILD T1 theodolite and MILD DI-4L EDM. The corners were maintained to contract specifications. Land corner recordation forms have been filed with the Baker County Surveyor's Office as part of this survey for these recovered corners. The survey was performed at the request of the USDA Forest Service

BASIS OF BEARINGS
MINERAL SURVEY NO. 800
BETWEEN CORNERS 2 AND 3

DECL. 20°E



FILED 11-16-1990
BAKER COUNTY SURVEYOR
SURVEY NO. 9-36-133
8-36-60

LEGEND

- FOUND MONUMENT OF RECORD
- SET 2.5 BY 30 INCH ALUM. MONUMENT
- PROPERTY LINE ESTABLISHED AND POSTED
- (**)** SURVEY DATA OF RECORD
- [- ' -] BEARING BY SOLAR OBSERVATION

DOWNIE CADASTRAL SURVEY

CONTRACT NO.: 04M3-9-6056

REGISTERED
PROFESSIONAL
LAND SURVEYOR

Edwin A. Stryker

OREGON
JULY 13, 1983
EDWIN A. STRYKER
2080

STRYKER-KIMBELL ASSOCIATES

67918 HUNTER ROAD
SUMMERVILLE, ORE 97876
(503) 534-6905

DRANN HP7575A

JOB NO 0689030936

DATED 8-26-90

CHECKED BY EAS

SCALE 1 in. = 200

SHEET 2 OF 5