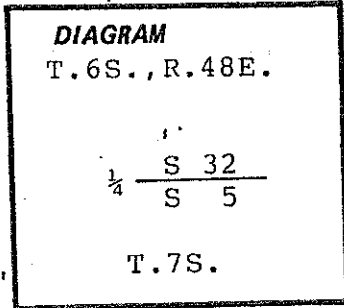


CERTIFIED RECORD OF LAND CORNER MONUMENTATION

T.6S., R.48E., Z-7
T.7S., R.48E., A-7

History of original corner establishment:

Corner was originally established under GLO Contract No. 707, by Willard B. Blakeslee, dated August 14, 1901. Surveyor General's notes state: "Set a basalt stone 14" x 10" x 6", 8" in the ground, for 1/4 section corner, marked 1/4 on the North face, from which a pine tree 21" in dia. bears S. 20° W., 50 lks. dist. marked 1/4 S5 BT...raised mound of stone..."



Baker County Survey No. 6-48-7 filed April 16, 1979 shows this corner as "reset".

Barry B. Barbour set a monument as described on Baker County Survey No. 6-48-12. This monument bears N. 40° 18' 33" W., 408.79 feet from the true corner location.

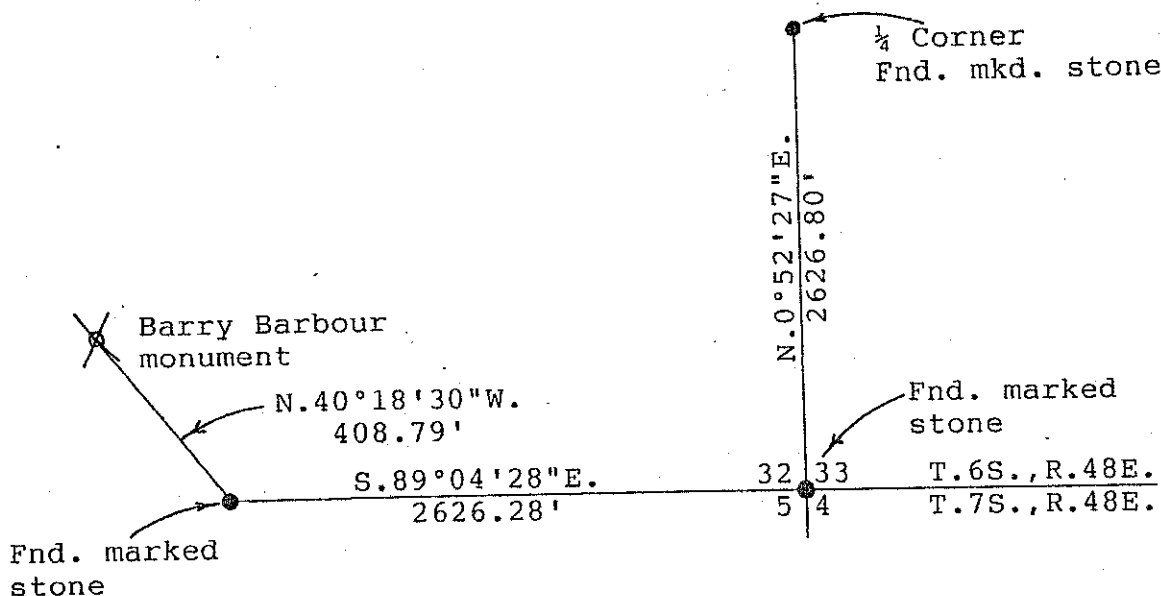
Description of corner evidence found:

Found a basalt stone 16" x 16" x 6" firmly set into the ground marked with deep 1/4 on North face.

From which a 42" Ponderosa Pine bears S. 20° W., 33.0 feet dist., marked with scribe visible on partially healed blaze.

Description of monument and accessories I established to perpetuate the original location of this corner:

No new monumentation nor accessories were established. The purpose of this monumentation sheet is to document the original corner evidence found and show the relationship between the true corner position and the erroneously established Barry B. Barbour monument.



I hereby certify that the above information is a direct result of field survey work performed by myself and Larry McBroom, March 17, 1994.

Office of..... County of.....
State of....., I hereby certify that the within instrument was filed in this office
for record on the..... day of....., 19.....
..... by
(COUNTY OFFICIAL) (DEPUTY)

**REGISTERED
PROFESSIONAL
LAND SURVEYOR**

Thomas D. Fisk

OREGON
JULY 25, 1923
THOMAS D. FISK
#2446