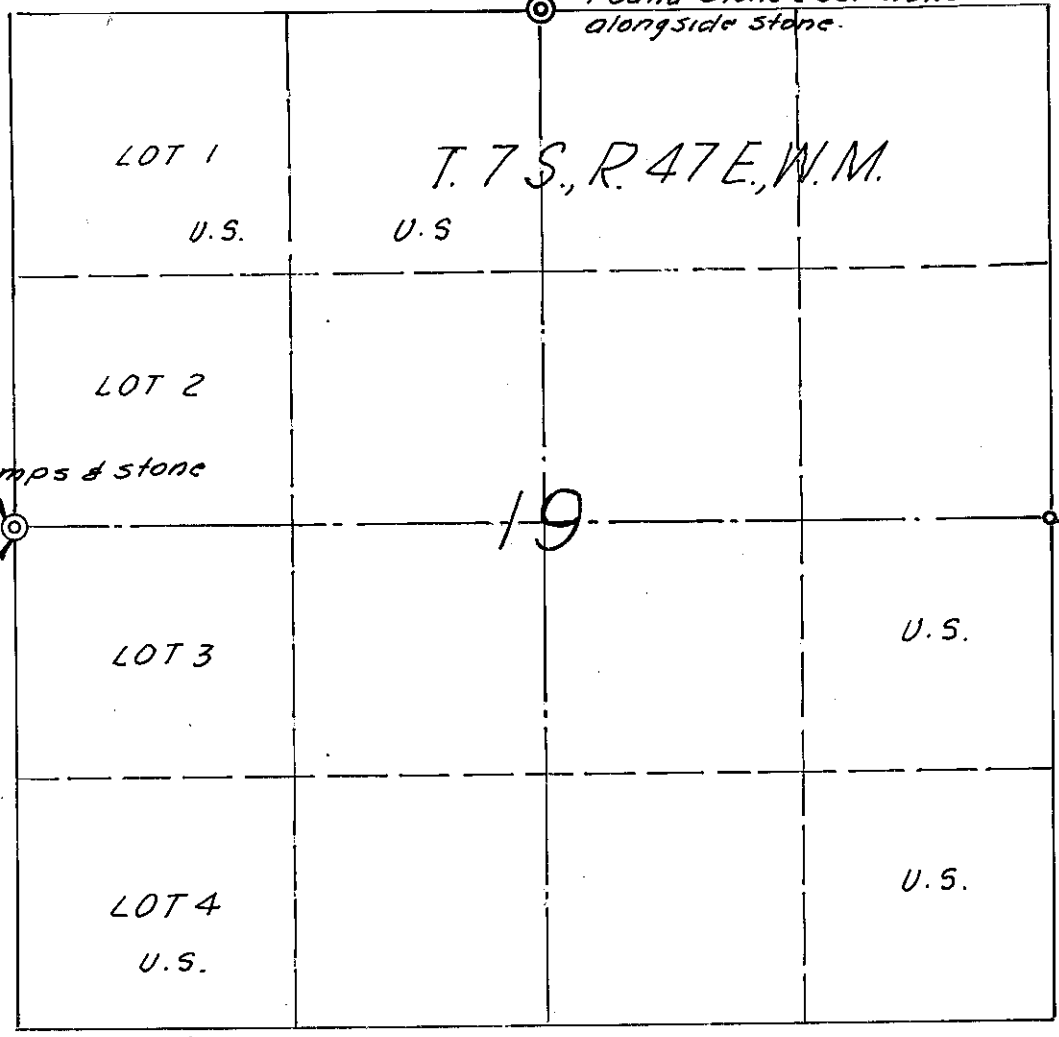


1/4 518
519
CS
1969

Found B.T. stump for Sec. 18
B.T. for Sec. 19 is down.
Found stone & set monument
alongside stone.



1/4
524 | 519
CS
1969

Found, 2 B.T. stumps & stone
Set monument
alongside stone.

Found, marked
by U.S.F.S.

Var. 19 1/2° by Solar Obs.

MONUMENTATION OF NORTH & WEST
1/4 CORNS., SEC. 19, T. 7 S., R. 47 E., W. M.

Sept., 1969

Scale 1"=1,000'

Survey for Ellingson Timber Co.

FILED Sept. 17, 1969
BAKER COUNTY SURVEYOR
SURVEY NO. 7-47-2

