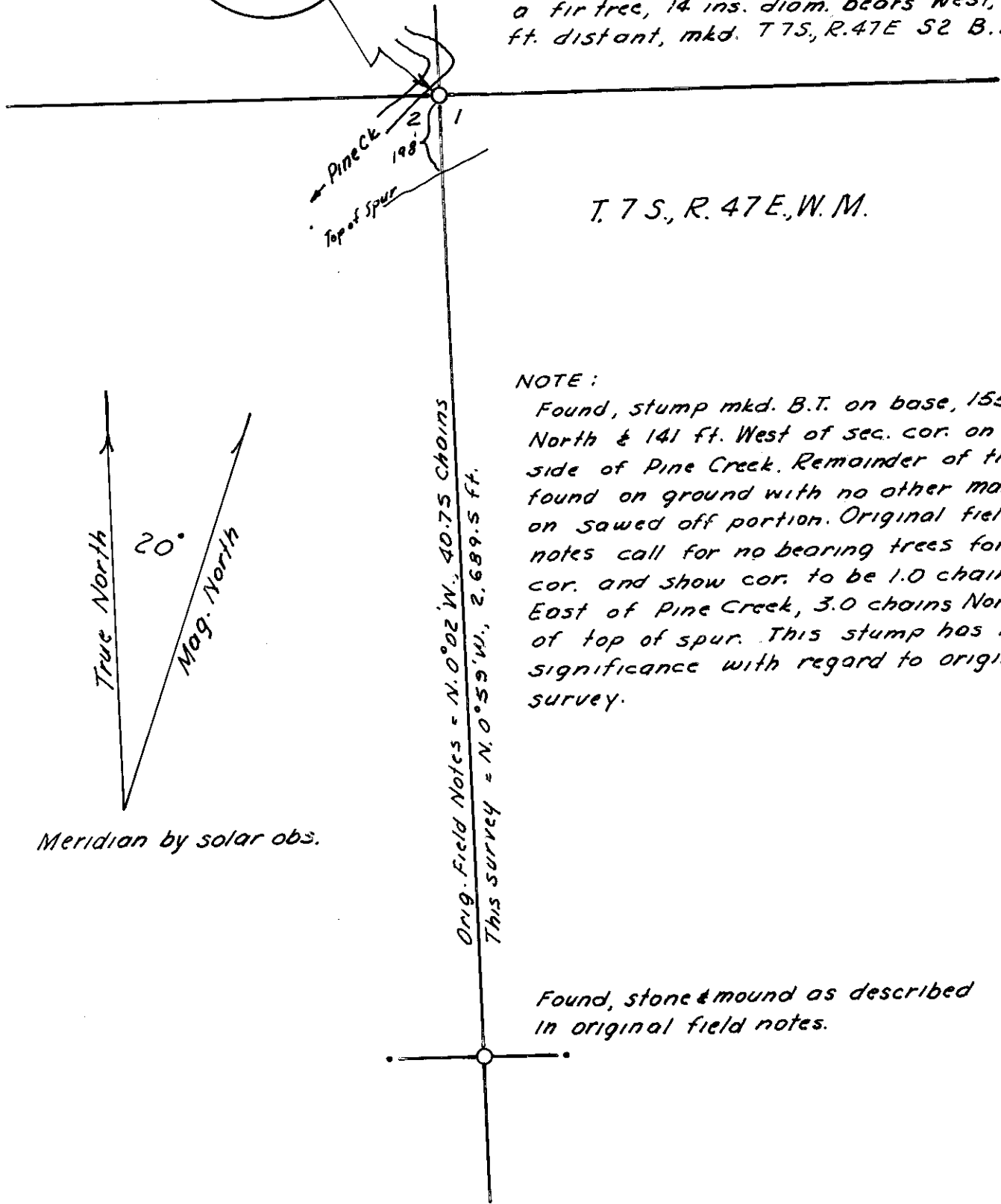


T 7 S R 47 E
 2 | 1
 C S
 JDH 1964 2808

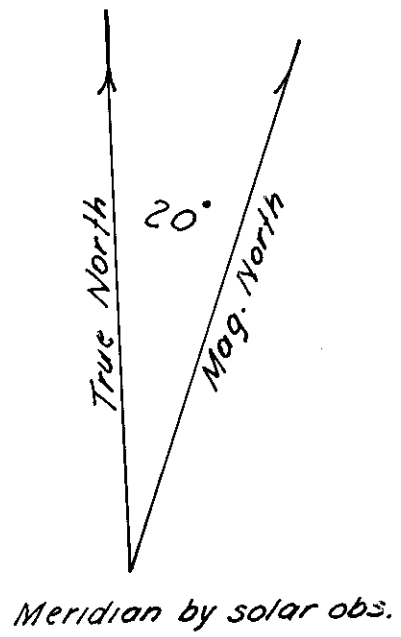
Set iron post with cap, marked as shown. Raised mound of stone, 3 ft. base, 2 ft. high, 4 ft. East of corner, from which a fir tree, 14 ins. diam. bears West, 1.7 ft. distant, mkd. T 7 S, R. 47 E S 2 B. T.



T. 7 S., R. 47 E., W. M.

NOTE:

Found, stump mkd. B.T. on base, 155 ft. North & 141 ft. West of sec. cor. on West side of Pine Creek. Remainder of tree found on ground with no other markings on sawed off portion. Original field notes call for no bearing trees for sec. cor. and show cor. to be 1.0 chain East of Pine Creek, 3.0 chains North of top of spur. This stump has no significance with regard to original survey.



Orig. Field Notes = N. 0° 02' W., 40.75 Chains
 This survey = N. 0° 59' W., 2,689.5 ft.

Found, stone & mound as described in original field notes.

RESTORATION OF SECTION CORNER BET. SECS. 1 & 2 T. 7 S., R. 47 E., W. M.

SCALE 1" = 400' SURVEYED MAY, 1964
 for ELLINGSON LUMBER COMPANY

FILED May 23, 1964
 BAKER COUNTY SURVEYOR
 COUNTY NO. 7-47-1

James D. Hanley
 County Surveyor, Baker
 County, Oregon

