

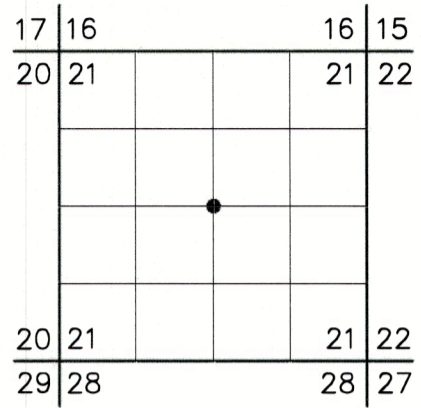
RECORD OF LAND CORNER MONUMENTATION

CENTER 1/4 CORNER OF SECTION 21, T. 7 S., R. 46 E., W.M.

ORIGINALLY ESTABLISHED BY: Barry B. Barbour, PLS 1051

SURVEY NUMBER: 7-46-95 & 7-46-135

RECORDED DATE: January 25, 1982



ORIGINAL DESCRIPTION:

At survey point set 2 1/2" x 30" galvanized pipe and brass cap marked (diagram shown):
 Set pipe 26" in the ground.
 From which by magnetic declination of N20°E:
 An 11" fir bears N76°E, 14.0 ft. scribed C 1/4 S21 BT.
 A 15" fir bears N47°W, 38.4 ft. scribed C 1/4 S21 BT.
 Painted blazes red and 6" red band around. Placed 54-3s, 54-9s, and brass washers stamped PLS 1051 on BTs. Placed 54-2 and 54-9 on a steel fence post 5' East and 54-2 on a steel fence post 5' South of the corner.

EVIDENCE FOUND:

Found a 2 1/2" galvanized iron pipe and 2 1/2" brass cap, marked as shown on the diagram, projecting 3" above ground, with 2 steel fence posts with attached USFS 54-9 and 54-2 signs, 5 ft., east and 5 ft., south.

From which the original bearing trees:

A fir, 15" dbh, bears N.76°E., 14.0 ft., with healed blaze in good condition.
 A fir, 24" dbh, bears N.47°W., 38.4 ft., with healed blaze in good condition.

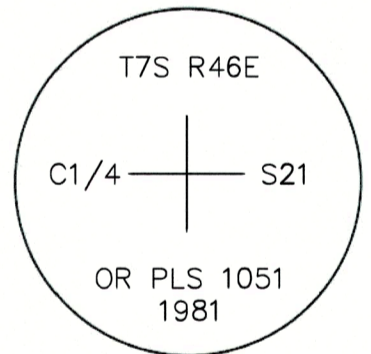
DESCRIPTION OF MONUMENTS AND ACCESSORIES SET AND METHODS USED:

I accept position of the found monument for the corner.

CORNER MONUMENT
MARKED:

From which, **I SET NEW REFERENCE MONUMENTS:**

- ▶ A 5/8"x24" iron rod, bears S.39°E., 5.07 ft., with attached 2" aluminum cap marked *RM 1 2023 PLS 91693*.
- ▶ A 5/8"x24" iron rod, bears S.31°W., 5.66 ft., with attached 2" aluminum cap marked *RM 2 2023 PLS 91693*.



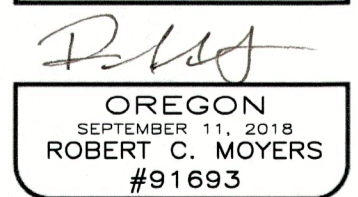
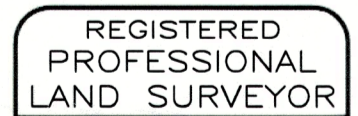
Painted a 6 inch red band around each bearing tree, and also painted blazes red and attached USFS 54-3 and 54-9 signs as needed. Distances to new reference monuments measured with steel tape. Distances to bearing trees measured with handheld EDM. Bearings measured with a handheld compass with 14° East declination.

RESTORATION BY, STAMP AND DATE:

Work Performed November 14, 2023 by:

T. DeJesus Quinones, LSIT
 Vincent L. Kelly
 Spencer B. Jones

USDA FOREST SERVICE
 NORTHEAST OREGON LAND ZONE
 1550 Dewey Avenue, Suite A
 Baker City, OR 97814
 (541) 523-1281



RENEWS: 12/31/2024

FILED January 24, 2024
 BAKER COUNTY SURVEYOR
 SURVEY NO. 7-46-169