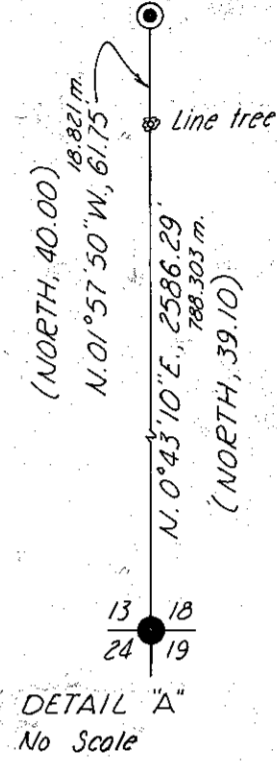




Meridian based on Solar Observation



U.S. GOVERNMENT LANDS

SECTION 23	SECTION 24
NE 1/4 (all)	NE 1/4 (all)
NE 1/4 SE 1/4, SE 1/4 SE 1/4, NW 1/4 SE 1/4	SE 1/4 (all)
W 1/2 SW 1/4	SE 1/4 SW 1/4
NW 1/4 (all)	NE 1/4 NW 1/4, SW 1/4 NW 1/4, NW 1/4 NW 1/4

LEGEND

- Set 2 1/2" brass cap on 2" x 31" iron pipe at proportionate distance.
- ⊙ Found original GLO corner - Set 2 1/2" brass cap on 2" x 31" iron pipe.
- Found monument of record.
- ⊙ Record GLO line tree
- () GLO record bearing and distance
- Property boundary posted

NOTE: FOR MONUMENTATION RECORDS SEE CERTIFIED RECORD OF CORNER MONUMENTATION SHEETS FILED SEPARATELY.

REGISTERED PROFESSIONAL LAND SURVEYOR

William L. Hanley

OREGON JULY 15, 1978 WILLIAM L. HANLEY 1639

RECORD OF SURVEY PLAT

SCATTER-DRY CADASTRAL SURVEY

U.S. FOREST SERVICE CONTRACT NO. 53-04HI-9-7414N

Surveyed July 9 to Sept. 30, 1979

Scale 1" = 500'

SURVEYED BY HANLEY ENGINEERING

FILED - Nov. 23, 1979
BAKER COUNTY SURVEYOR
SURVEY NO. 7-46-75