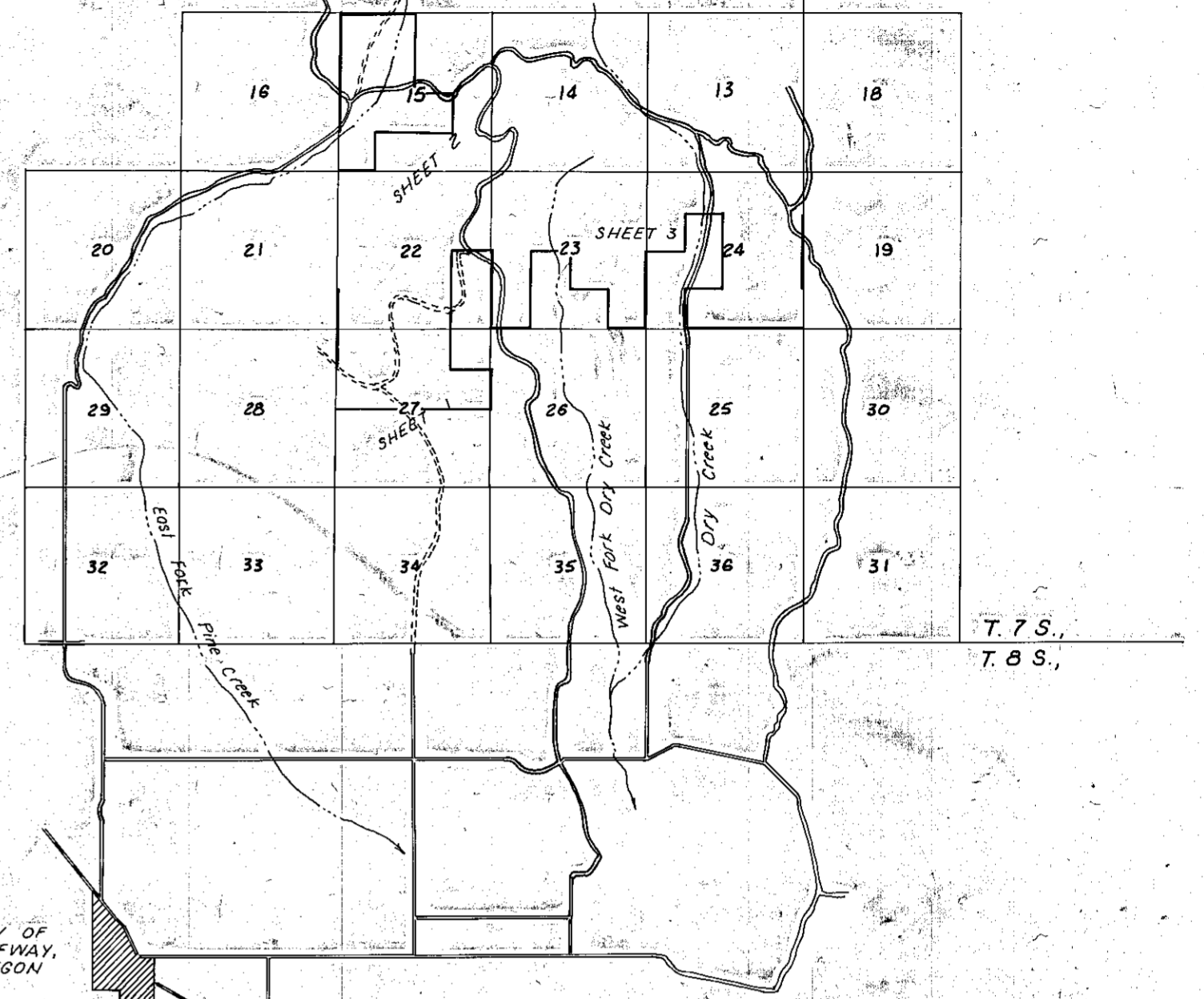


Meridian based on  
 Solar Observation



**SURVEYOR'S STATEMENT:**

I, WILLIAM L. HANLEY, A REGISTERED SURVEYOR IN THE STATE OF OREGON, HEREBY CERTIFY THAT THESE PLATS AND THE NOTES HEREON, OR ATTACHED, ARE A CORRECT REPRESENTATION OF A SURVEY PERFORMED UNDER MY DIRECT SUPERVISION DURING JULY, AUGUST AND SEPTEMBER, 1979, FOR THE U.S. FOREST SERVICE, IN ACCORDANCE WITH THE STATUTES OF THE STATE OF OREGON AND WITH THE ARTICLES OF MY CONTRACT.

William L. Hanley  
 OELS 1639

**SOLAR OBSERVATION DATA**

TRANSIT STATION NO. 5 -  
 S. 04° 36' 45" E, 830.69' FROM  
 WEST 1/4 COR. SECTION 15.  
 JULY 10, 1979  
 LATITUDE 44° 57' 14"  
 DECLINATION 22° 15' 00" N.  
 VERTICAL ANGLE 47° 22' 37"  
 MEAN DECLINATION 19° E.

U.S. GOVERNMENT LANDS  
 SECTION 27

SE 1/4 NE 1/4, SW 1/4 NE 1/4, NW 1/4 NE 1/4  
 NW 1/4 (all)

**LEGEND**

- Set 2 1/2" brass cap on 2" x 31" iron pipe at proportionate distance.
- ⊙ Found original GLO corner - Set 2 1/2" brass cap on 2" x 31" iron pipe.
- Found monument of record.
- ( ) GLO record bearing and distance.
- Property boundary posted.

NOTE: FOR MONUMENTATION RECORDS SEE CERTIFIED RECORD OF CORNER MONUMENTATION SHEETS FILED SEPARATELY.

REGISTERED PROFESSIONAL LAND SURVEYOR

William L. Hanley

OREGON  
 JULY 14, 1978  
 WILLIAM L. HANLEY  
 1639

**RECORD OF SURVEY PLAT**

**SCATTER-DRY CADASTRAL SURVEY**

U.S. FOREST SERVICE CONTRACT NO. 53-04H1-9-7414 N

Surveyed July 9 to Sept. 30, 1979

Scale 1" = 500'

FILED Nov. 23, 1979  
 BAKER COUNTY SURVEYOR  
 SURVEY NO. 7-46-73

SURVEYED BY HANLEY ENGINEERING