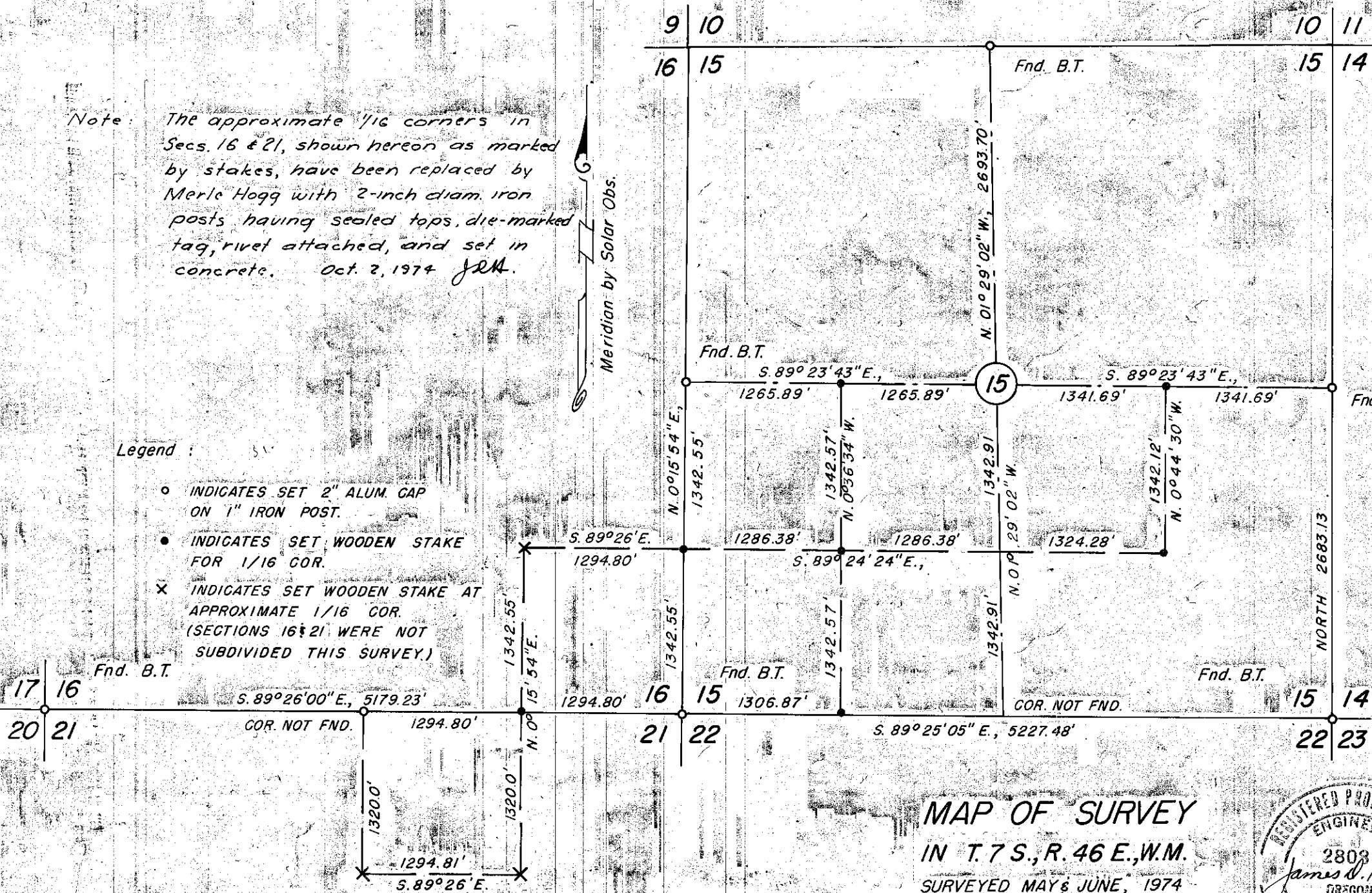


Note: The approximate 1/16 corners in Secs. 16 & 21, shown hereon as marked by stakes, have been replaced by Merle Hogg with 2-inch diam. iron posts having sealed tops, die-marked tag, rivet attached, and set in concrete. Oct. 2, 1974 JRM.

Legend:

- INDICATES SET 2" ALUM. CAP ON 1" IRON POST.
- INDICATES SET WOODEN STAKE FOR 1/16 COR.
- ✕ INDICATES SET WOODEN STAKE AT APPROXIMATE 1/16 COR. (SECTIONS 16 & 21 WERE NOT SUBDIVIDED THIS SURVEY.)

Meridian by Solar Obs.



MAP OF SURVEY

IN T. 7 S., R. 46 E., W.M.

SURVEYED MAY & JUNE, 1974

SCALE 1" = 1000'

FOR MERLE HOGG

FILED July 12, 1974

BAKER COUNTY SURVEYOR

SURVEY NO. 7-46-1

