

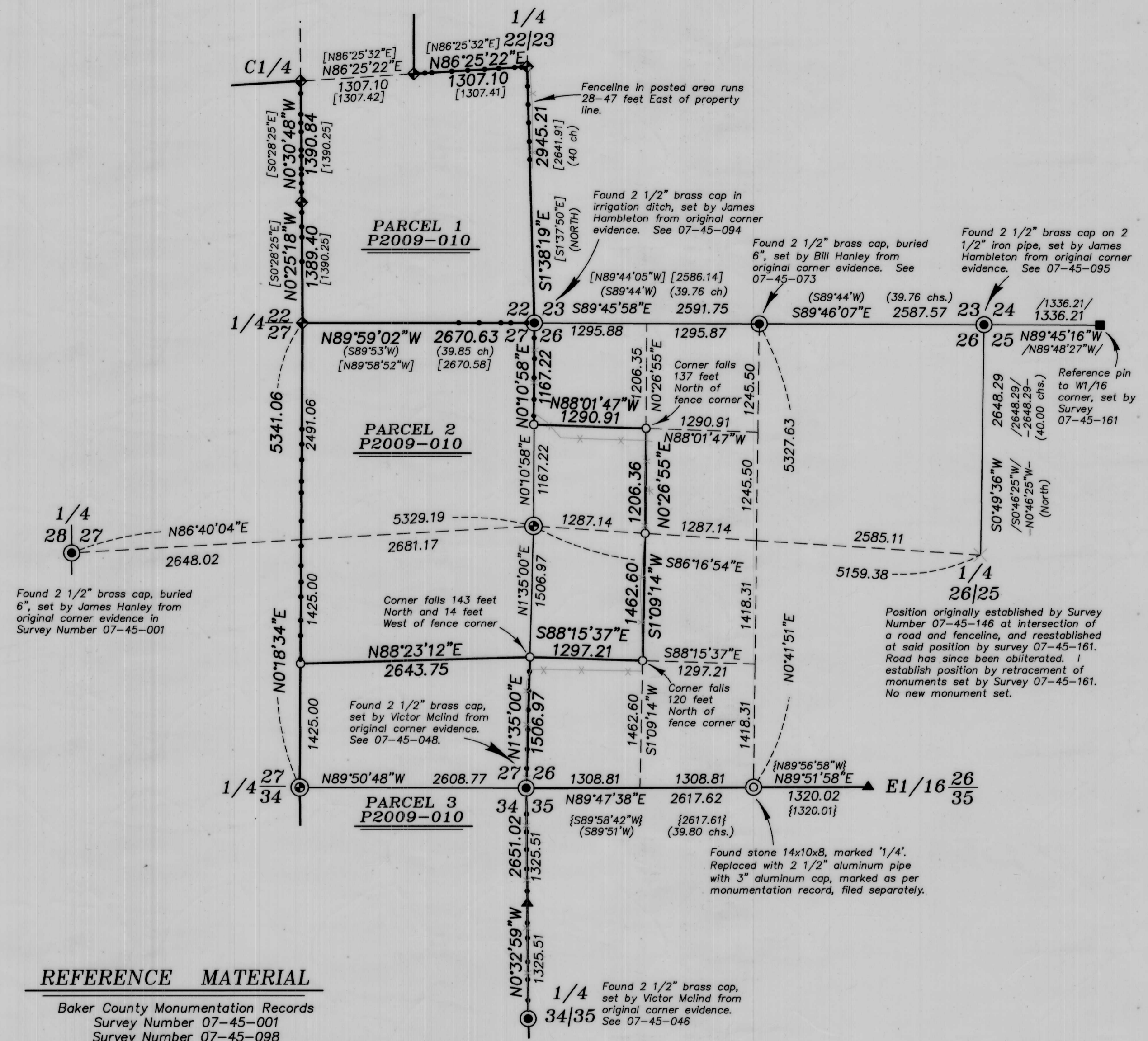
BASIS OF BEARING

True Geodetic North taken at the quarter corner common to Sections 34 and 35, Township 7 South, Range 45 East of the Willamette Meridian, as determined by GPS observation

SCALE: 1" = 1000'

LEGEND

- Found brass cap as described, marked as per Baker County monumentation records
- ⊙ Found 2 1/2" iron pipe with 3" brass cap, set by BLM monumentation survey, executed by A. Joseph Garrison
- ◆ Found 2 1/2" aluminum pipe with 2 1/2" aluminum cap, set by Duane Griffith in Survey Number 07-45-097
- Found 5/8" iron pin with plastic cap marked BENCHMARK SURVEYING, set by Survey Number 07-45-161
- ▲ Found 5/8" iron pin with plastic cap marked HANLEY ENGR, set by Survey Number 07-45-148
- ⊙ Set 2 1/2" aluminum pipe with 3" aluminum cap, marked as per monumentation record, filed separately
- Set 5/8" x 30" iron pin with 2 1/2" aluminum cap marked as per monumentation record, filed separately
- () Record measurement as per Field Notes of GLO Contract Number 443, executed by W.B. Barr
- [] Record measurement as per Survey Number 07-45-097
- - Record measurement as per Survey Number 07-45-146
- { } Record measurement as per Survey Number 07-45-148
- / / Record measurement as per Survey Number 07-45-161
- Existing fenceline
- Steel fencepost set on line



REFERENCE MATERIAL

- Baker County Monumentation Records
 - Survey Number 07-45-001
 - Survey Number 07-45-098
 - Survey Number 07-45-146
 - Survey Number 07-45-148
 - Survey Number 07-45-161
- Partition Plat Number 2009-010
- Field Notes of GLO Contract Number 443, dated May 29, 1882, executed by W.B. Barr
- Field Notes of BLM monumentation survey, under special instructions dated May 3, 1957 included under Group Number 350, executed by A. Joseph Garrison
- DEED REFERENCES
 - Microfilm Document Number B12 49 0317
 - Microfilm Document Number B05 18 0289
 - Microfilm Document Number 90 34 043

NARRATIVE

This survey was done at the request of Patrick Marolla, on behalf of Hancock Forest Management, manager of the land within. Mr. Marolla wanted the exterior of their ownership monumented and posted prior to logging operations. I recover the monuments as shown hereon. I recover the monuments as shown hereon and find them harmonious with record measurements of recorded surveys.

The East quarter corner of Section 26 was not found by any recent surveys and its position was established by James Hanley in Survey Number 07-45-146 at the intersection of fences and the centerline of the road. The road has since washed out, but its position was perpetuated by Jason Hatfield in Survey Number 07-45-161 at record position of the Hanley survey. I retrace monuments of the Hatfield survey to reestablish this position.

I subdivide the section as per BLM Manual of Instructions 2009. Fenceline are off as shown hereon. I find no other unusual conditions with this survey.

REGISTERED
PROFESSIONAL
LAND SURVEYOR

OREGON
JUNE 2, 2010
JEFFREY S. HSU
83571

Renewal Date: June 30, 2019

FILED June 26, 2018
BAKER COUNTY SURVEYOR
SURVEY NO. 7-45-172

BAGETT, GRIFFITH & BLACKMAN
2006 Adams Avenue, LaGrande, Oregon

Map of Survey
Situate in Section 22, 26, 27, and 34,
Township 7 South, Range 45 East of the
Willamette Meridian
BAKER COUNTY, OREGON

SURVEYED FOR	Hancock Forest Management
SURVEYED BY	J. S. H.
Scale: 1" = 1000'	Drawn by: J. S. H. May 2018