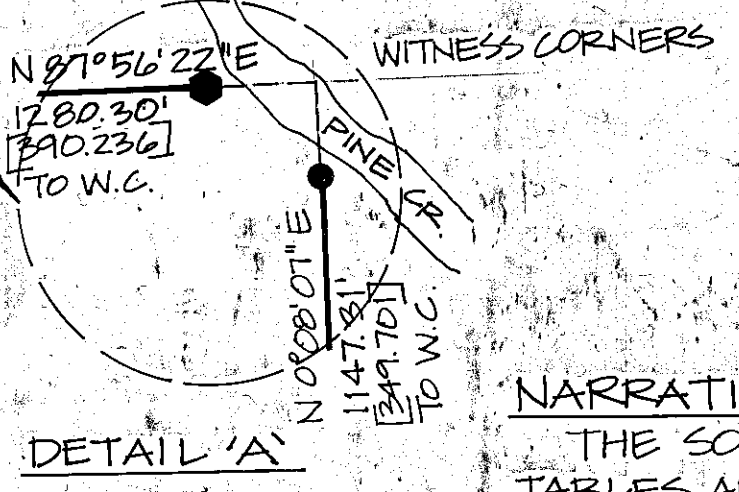


**BASIS OF BEARING**  
SOLAR OBSERVATION  
8-12-82, BOOK 1,  
PAGE 30.

**MEAN MAGNETIC DECLINATION**  
N 20° 00' E

**NOTES**  
FORM T100-57 FOR INDEX FILE  
NUMBERS E-14, E-15-16, G-13,  
G-14, G-15, G-15-16, G-17, H-14,  
H-15, H-15-16, J-13, J-15, K-15,  
K-16, L-15, M-15, AND M-16 FILED  
WITH THIS SURVEY.



**LEGEND**

- FOUND CORNER. BRASS CAP OF RECORD
- CORNER SET FROM ORIGINAL G.L.O. EVIDENCE. (1978)
- ▲ BRASS CAP CORNERS, SET BY 1978 SURVEY.
- BRASS CAP CORNERS, SET BY 1978 SURVEY, RESET 1982.
- BRASS CAP CORNERS SET BY SURVEY.
- POSTED U.S.F.S. BOUNDARY
- ( ) RECORD G.L.O. BEARING & DISTANCE
- [ ] METERS

**REFERENCE MATERIAL**

ORIGINAL G.L.O. PLAT & NOTES,  
FIELD BOOKS 1-4.  
SURVEYS 7-45-6, 7-45-75, 7-45-98 &  
7-45-5.

**SURVEY HISTORY**

T7S, R45E, W.M. WAS ORIGINALLY SURVEYED BY W.B. BARR, UNDER G.L.O. CONTRACT NUMBER 443. IN 1978, I SURVEYED SECTION 15 AS SHOWN BY SURVEY 7-45-6, FILED WITH THE COUNTY SURVEYOR. SURVEYS BY OREGON P.L.S. #644 AND #645 HAVE BEEN PERFORMED TO THE EAST, SOUTH AND NORTH BOUNDARIES OF THIS SURVEY. THESE SURVEYS ARE SHOWN UNDER REFERENCE MATERIAL.

**NARRATIVE**

THE SOLAR OBSERVATION I DID IN 1978 WAS COMPUTED FROM U.S.C. & G.S. TABLES AND THE WRONG DATE WAS USED. THIS WAS CORRECTED BY THE 1982 OBSERVATION.

IN 1978, THE NORTHWEST CORNER OF SECTION 10, WAS MEASURED BY A DOUBLE RUN TRAVERSE. A CLOSED LOOP TRAVERSE IN 1982 TO THIS CORNER, CHANGED THE CORNER POSITION BY ABOUT 3 FT. THIS CHANGE IS SHOWN AND EFFECTED CORNERS SET IN 1978 HAVE BEEN RESET.

THIS SURVEY WAS PERFORMED FOR THE U.S. FOREST SERVICE, TO SUBDIVIDE SECTIONS 10 AND 15. THE BOUNDARY LINE BETWEEN THE U.S.F.S. AND PRIVATE LAND, IS MARKED WITH 6 FT. STEEL FENCE POSTS.

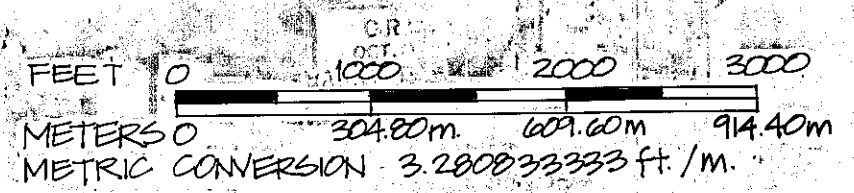
CLOSED LOOP TRAVERSES WERE RUN, USING A WILD T-2 AND MAC II-H EDM.

I, BARRY B. BARBOUR, a registered land surveyor in the State of Oregon, hereby certify that this plat and notes hereon, or attached are a correct representation of a survey I performed during August and September 1982, for the U.S. Forest Service in accordance with the articles of the contract and with the statutes of the State of Oregon. Contract number 53-04M3-2-2781.

*Barry B. Barbour*  
Barry B. Barbour  
Registered Land Surveyor  
Oregon License 1051

FILED 11-7-85  
BAKER COUNTY SURVEYOR  
SURVEY NO. 7-45-121

REGISTERED PROFESSIONAL LAND SURVEYOR  
*Barry B. Barbour*  
OREGON  
OCT. 17, 1975  
BARRY B. BARBOUR  
1051



|   |   |
|---|---|
| SECTIONS 10 & 15<br>T7S, R45E, W.M.<br>BAKER COUNTY, OREGON |   |
| U.S.F.S. WALLOWA-WHITMAN NATIONAL FOREST                    |   |
| Scale<br>1" = 1000'<br>1" = 304.80m                         | Sheet No.<br>1  |
| Date<br>APRIL 1985  | BARRY B. BARBOUR<br>Professional Land Surveyor<br>P.O. Box 4811<br>BOISE, IDAHO |