

**BASIS OF BEARING**

A.M. Solar observation taken at a point 600 ft. North of the Southeast corner of Section 22, Township 7 South, Range 45 East of the Willamette Meridian

Date	October 22, 1981
Mean vert. angle	17° 47' 59"
Mean declination	-11° 17' 58"
Mean horiz. angle	181° 46' 58"
Latitude	44° 56' 13"
Magnetic declination	20° East

**SURVEYOR'S STATEMENT**

I, Duane I. Griffith, Registered Land Surveyor in the State of Oregon, hereby certify that this plat and the notes hereon, or attached are a true and correct representation of the survey I made during the fall of 1981 and 1982, for the U.S. Forest Service in accordance with the statutes of the State of Oregon and with the articles of my contract.

The survey was started in the fall of 1981 and completed in 1982. I established control on prominent points and using electronic distance measuring equipment, tied the corners of this section which were found. I was unable to find the South 1/4 corner. Proportionate distance lands in the edge of the road prism. The area has been extensively logged. I therefore proportion this corner. I found a brass cap set near the East 1/4 corner set by Hambleton in 1931. Due to a conflict in Forest Service records, statements by local landowners and the lack of evidence of the original GLO corner, I made a search of the records. I found a map by Ira Hoffman dated April 1928. This had been in the title company records. I also found a field book by Hoffman dated February 26, 1927 to July 17, 1928, in which he found the stone and 2 bearing trees for the East 1/4 corner. He states he set an iron pipe 1' x 4' in a mound of stone. I found a 1" iron pipe in a fence corner Southeast of Hambleton's brass cap. I accept this pipe as the 1/4 corner. I find no other unusual conditions.

**REFERENCE MATERIAL**

- Original GLO notes of contract number 443, done by W.B. Barr
- BLM remonumentation notes, group no. 350, dated June 16, 1975
- Unrecorded survey by Ira L. Hoffman, Baker County Surveyor, dated April 5-12, 1928
- Survey numbers
  - 7-45-6
  - 7-45-73
  - 7-45-75
- Re monumentation sheet numbers
  - 7-45-8
  - 7-45-13
  - 7-45-88
  - 7-45-94

**LEGEND**

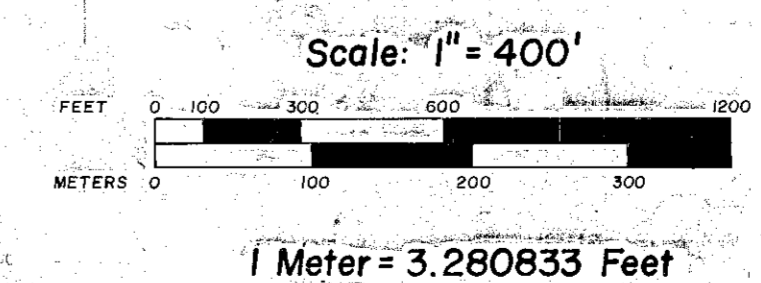
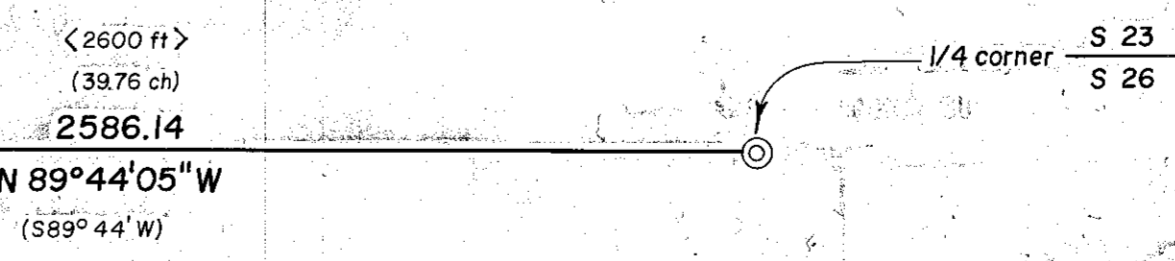
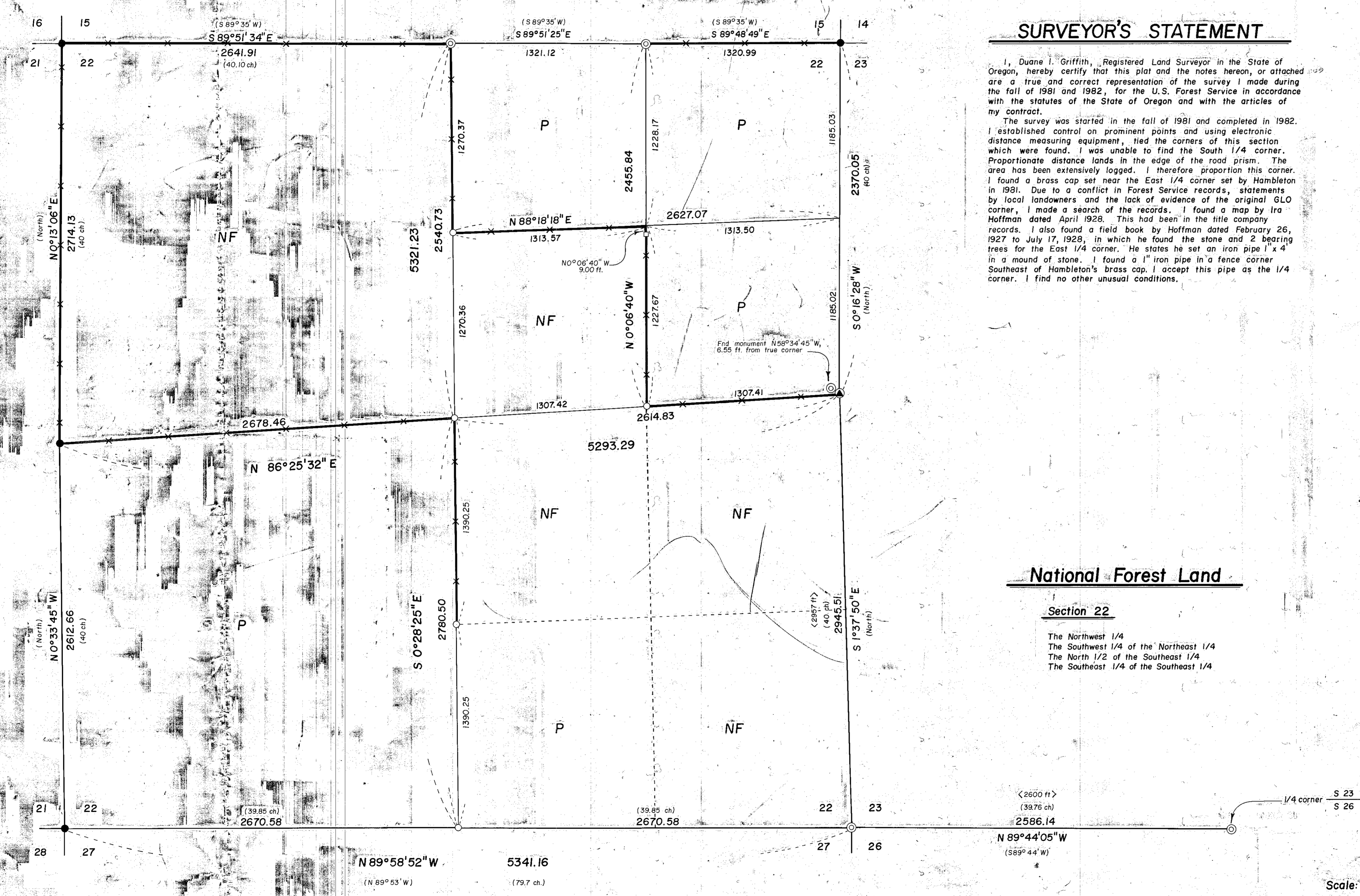
- Found BLM brass cap monument
- Found brass cap monument set by others
- Set 2 1/2" x 30" monument at proportionate position
- ▲ Found monument set by others and replaced with 2 1/2" x 30" monument
- Set 2 1/2" x 30" monument for witness corner
- Posted line
- ( ) GLO record distance and bearing
- < > Record distance from Ira L. Hoffman survey
- NF National Forest land
- P Privately owned land

**National Forest Land**

**Section 22**

The Northwest 1/4  
 The Southwest 1/4 of the Northeast 1/4  
 The North 1/2 of the Southeast 1/4  
 The Southeast 1/4 of the Southeast 1/4

**NOTE:**  
 For monumentation information, see monumentation sheets filed separately



REGISTERED PROFESSIONAL LAND SURVEYOR  
 Duane I. Griffith  
 OREGON JULY 10, 1954  
 DUANE I. GRIFFITH  
 644

FILED Sept. 10, 1982  
 BAKER COUNTY SURVEYOR  
 SURVEY NO. 7-45-98

**BAGETT - GRIFFITH & ASSOCIATES**  
 La Grande, Oregon  
 Map of Survey  
 Survey in Section 22, Township 7 South, Range 45 East of the Willamette Meridian  
 BAKER COUNTY, OREGON

SURVEYED FOR	Wallowa-Whitman National Forest
SURVEYED BY	d.i.g. - g.t.b. - r.g.r. 9-10-11/82
Scale: 1" = 400'	Drawn by: r.g.r. 12/82