

Preliminary Copy
ONLY.
Subject to Revisions

BASIS OF BEARING

A.M. Solar observation taken at a point 600 ft. North of the Southeast corner of Section 22, Township 7 South, Range 45 East of the Willamette Meridian

Date October 22, 1981
Mean vert. angle 17° 47' 59"
Mean declination -11° 17' 58"
Mean horiz. angle 181° 48' 58"
Latitude 44° 56' 13"
Magnetic declination 20° East



SURVEYOR'S STATEMENT

I, Duane I. Griffith, Registered Land Surveyor in the State of Oregon, hereby certify that this plat and the notes hereon, or attached are a true and correct representation of the survey I made during the fall of 1981 and 1982, for the U.S. Forest Service in accordance with the statutes of the State of Oregon and with the articles of my contract.

The survey was started in the fall of 1981 and completed in 1982. I established control on prominent points and using electronic distance measuring equipment, tied the corners of this section which were found. I was unable to find the South 1/4 corner. Proportionate distance lands in the edge of the road prism. The area has been extensively logged. I therefore proportion this corner. I found a brass cap set near the East 1/4 corner set by Hambleton in 1981. Due to a conflict in Forest Service records, statements by local landowners and the lack of evidence of the original GLO corner, I made a search of the records. I found a map by Ira Hoffman dated April 1928. This had been in the title company records. I also found a field book by Hoffman dated February 26, 1927 to July 17, 1928, in which he found the stone and 2 bearing trees for the East 1/4 corner. He states he set an iron pipe 1' x 4' in a mound of stone. I found a 1" iron pipe in a fence corner Southeast of Hambleton's brass cap. I accept this pipe as the 1/4 corner. I find no other unusual conditions.

REFERENCE MATERIAL

Original GLO notes of contract number 443, done by W. B. Barr
BLM remonumentation notes, group no. 350, dated June 16, 1975
Unrecorded survey by Ira L. Hoffman, Baker County Surveyor, dated April 5-12, 1928

Survey numbers
7-45-6
7-45-73
7-45-75

Remonumentation sheet numbers
7-45-8
7-45-13
7-45-88
7-45-94

Preliminary Copy
ONLY.
Subject to Revisions

LEGEND

- Found BLM brass cap monument
- ⊙ Found brass cap monument set by others
- Set 2 1/2" x 30" monument at proportionate position
- ⊕ Found monument set by others and replaced with 2 1/2" x 30" monument
- Set 2 1/2" x 30" monument for witness corner
- Posted line
- () GLO record distance and bearing
- < > Record distance from Ira L. Hoffman survey
- NF National Forest land
- P Privately owned land

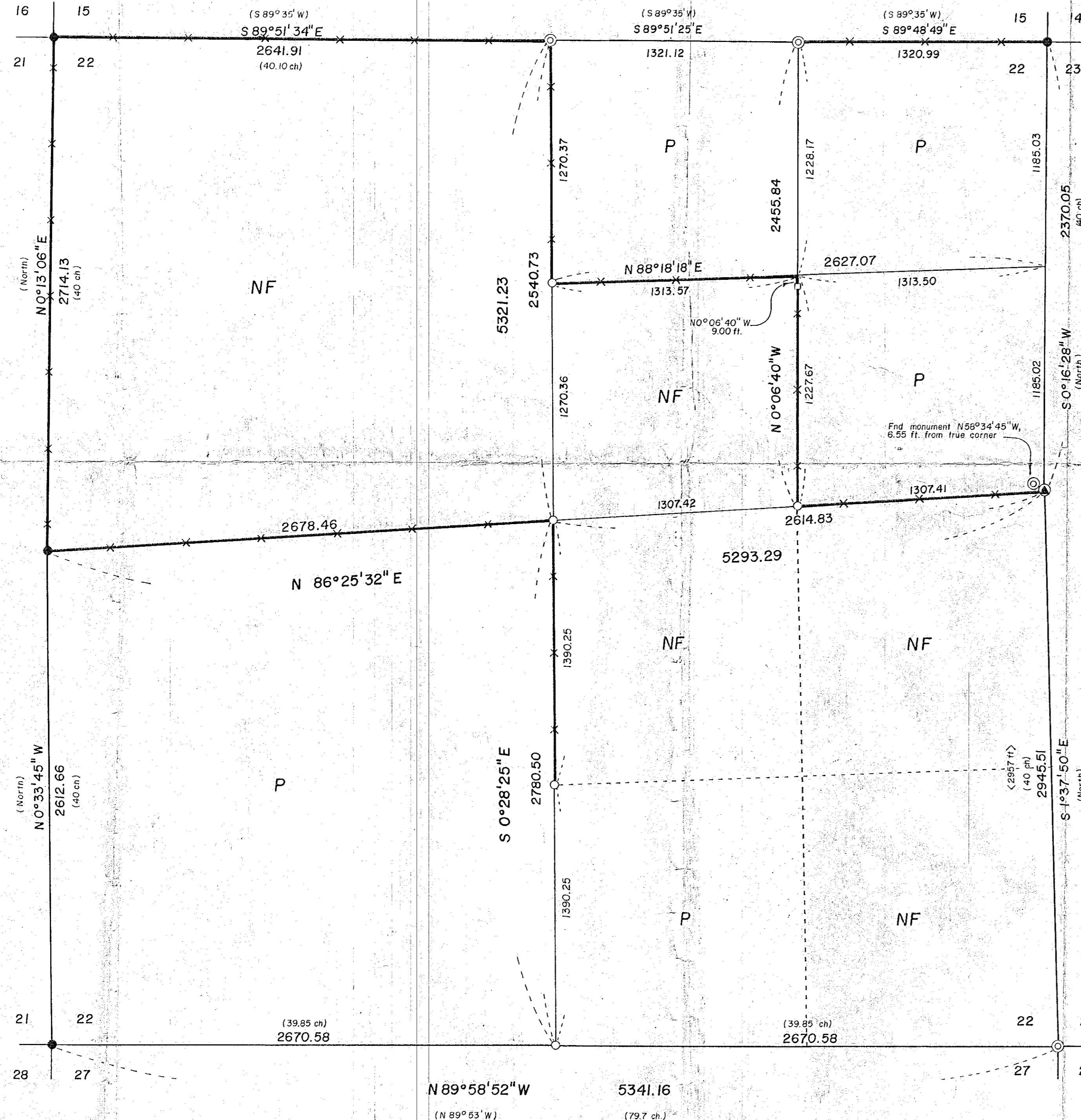
National Forest Land

Section 22

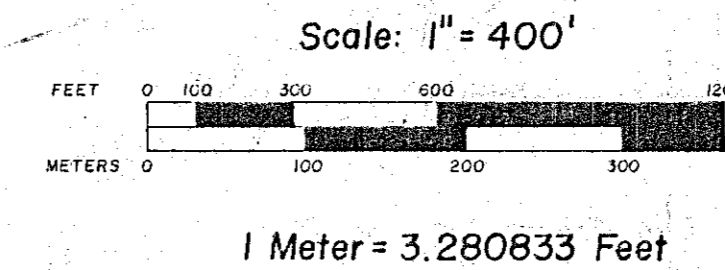
The Northwest 1/4
The Southwest 1/4 of the Northeast 1/4
The North 1/2 of the Southeast 1/4
The Southeast 1/4 of the Southeast 1/4

NOTE:

For monumentation information, see monumentation sheets filed separately.



Preliminary Copy
ONLY.
Subject to Revisions



Preliminary Copy
ONLY.
Subject to Revisions

REGISTERED PROFESSIONAL LAND SURVEYOR
DUANE I. GRIFFITH
644

BAGETT - GRIFFITH & ASSOCIATES La Grande, Oregon	
Map of Survey Survey in Section 22, Township 7 South, Range 45 East of the Willamette Meridian BAKER COUNTY, OREGON	
SURVEYED FOR	Wallowa-Whitman National Forest
SURVEYED BY	d.i.g. - g.t.b. - r.g.r.
Scale: 1" = 400'	Drawn by: r.g.r.
FILED March 8, 1983 BAKER COUNTY SURVEYOR SURVEY NO. 7-45-97	9-10-11/82 12/82