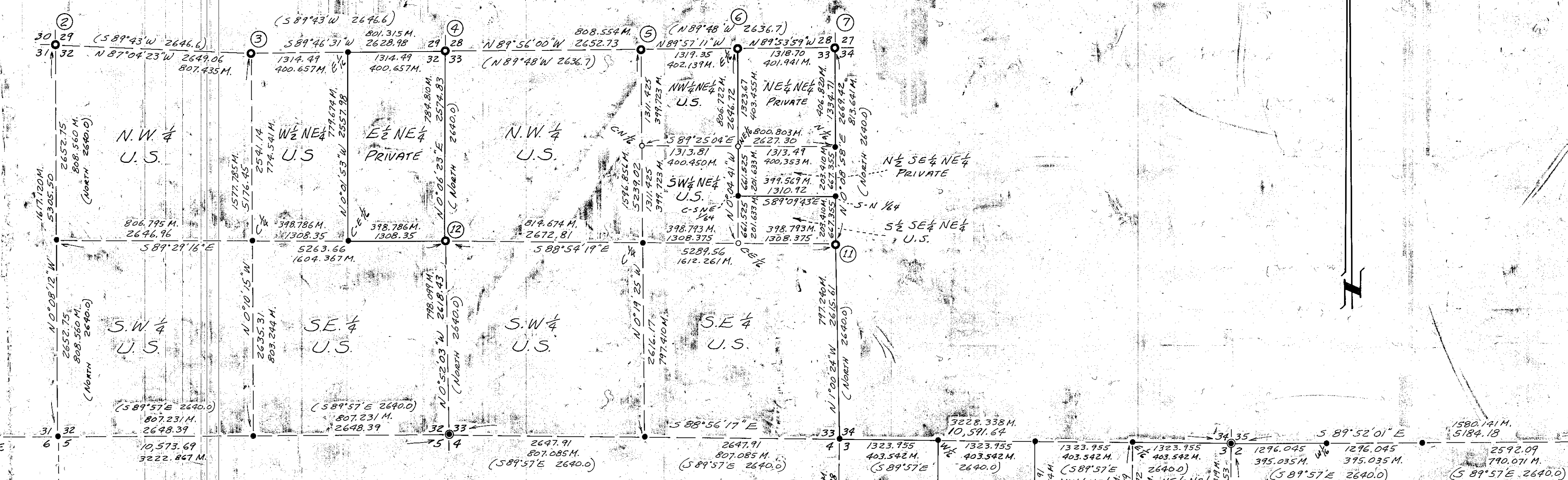


**LEGEND**

- Found Brass Cap, Used for Survey Control
  - Found County Surveyor's Brass Cap in Pavement, not used for Survey Control
  - Set 2" x 30" Galv. Iron Pipe with 2 1/2" Brass Cap from found evidence, used for Survey Control
  - Set 2" x 30" Galv. Iron Pipe with 2 1/2" Brass Cap from found evidence, not used for Survey Control
  - Set 2" x 30" Galv. Iron Pipe with 2 1/2" Brass Cap by sectional subdivision or proportionment
  - Not Found or Set
- National Forest Boundary posted with steel posts and U.S.F.S. Boundary Sign 54-2, this contract
- Section Lines or Sectional Subdivision Lines, not posted
- M Indicates Meters (Unlabeled distances are feet)
- ) Bearings and distances in brackets are from Orig. Gov't notes
- MEAN MAGNETIC DECLINATION 15°00' E.



NOTE: 1/2 Cor. Not Searched For

Section Cor. to Sections 28, 29, 32, 33, T75, R45E  
 Find 2 1/2" iron pipe in mound of stone, with Brass Cap stamped as shown, from which:  
 A pine, 11" diam, face w/ scribes T75 R45E S 28 BT visible, bears N 62° E 54.8 ft. (Rec. N 65E, 55.1/4 ft.)  
 A pine, 17" diam, face w/ scribes T75 R45E S 29 BT visible, bears N 58° W 45.0 ft. (Rec. N 55° W, 45.50 ft.)  
 A pine, 15" diam, face w/ scribes T75 R45E S 32 BT visible, bears S 10° W 76.75 ft. (Rec. S 8° W)  
 I established a new Bearing Object, a sandstone boulder, 48" x 40" x 28" high, "4 B" chiseled in face facing corner, bears S 62° E 98.5 ft. to "4"

1/2 Cor. to Sections 28 & 33, T75, R45E  
 Find 2 1/2" iron pipe in mound of stone, with Brass Cap stamped as shown, from which:  
 OBT, A pine stump, 30" diam, bears S 45° E 68.0 ft. (Rec. S 41E 66.0 ft.) no marks visible.  
 OBT, A pine snag, 20" diam, bears N 43° W 79.2 ft. (Rec. N 42° W 18.5 ft.) scribe marks "4 B" visible on decayed double blaze.  
 A fir, 12" diam, bears N 55° E 54.4 ft. (Rec. N 65° E 84.1 ft. = 55.4 ft.) face w/ scribes visible.  
 A pine, 12" diam, bears S 33° W 40.9 ft. (Rec. S 44° W 61.2 ft. = 40.6 ft.) face w/ scribes visible.

E 1/2 Cor. between Sections 28 & 33, T75, R45E  
 Find 2 1/2" iron pipe in mound of stone, with Brass Cap stamped as shown, from which:  
 A pine, 11" diam, bears N 6° W 68.8 ft. (Rec. N 6° W 68.3 ft.) face w/ scribes visible.  
 A pine, 9" diam, bears S 79° E 74.7 ft. (Rec. S 71° E 75.0 ft.) face w/ scribes visible.

Section Cor. to Sections 27, 28, 33, 34, T75, R45E  
 Find 2 1/2" iron pipe with Brass Cap incorrectly stamped for Sections 29, 31, 28 & 29. I corrected it to read as shown, from which:  
 OBT, A pine, 38" diam, bears N 64° E 18.6 ft. (Rec. 27.1 ft. = 17.8 ft.), heated blaze, did not open.  
 OBT, A pine, 30" diam, bears S 73° E 40.6 ft. (Rec. 60.6 ft. = 39.6 ft.), heated blaze, did not open.  
 OBT, A fir stump, 30" diam, bears S 49° W 8.4 ft. (Rec. 11.1 ft. = 7.3 ft.) scribe marks "BT" visible on partial blaze.  
 A pine, 11" diam, bears S 27° W 49.1 ft. (Rec. 32.4 ft. = 74.1 ft.) face w/ scribes visible.  
 A w. fir, 12" diam, bears N 72° W 27.1 ft. (Rec. N 76° W, face w/ scribes visible.)

1/2 Cor. to Section 36, T75, R45E and Sec. 1, T85, R45E  
 Find County Surveyor's Brass Cap set in Co. Road flush w/ pavement, stamped as shown. No accessories.

Township Cor. to T75, T85, R45E, R46E  
 Find County Surveyor's Brass Cap set at road int. flush w/ pavement, stamped as shown, from which:  
 A find 1 1/2" galv. iron pipe w/ 2 1/2" diam. cap at fence cor., bears S 46° W 42.6 ft.  
 A find 1 1/2" galv. iron pipe w/ 2 1/2" diam. cap bears S 43° E 47.83 ft.  
 New Bearing Object, "4 B" in the S.E. end of a concrete headwall which lies at the S.W. end of a double 24" conc. culvert, bears N 17° E, 76.04 ft.

Township Cor. to T75, T85, R44E, R45E  
 Find 2 1/2" iron pipe with Brass Cap stamped as shown, 6" above ground, with stones around, in good condition, from which:  
 A pine, 18" diam, partly heated face w/ scribes T75 R44E partly visible; good condition, bears N 45° W 180.8 ft. (274.1 ft.)  
 A pine, 12" diam, partly heated face w/ scribes, partly visible, bears S 84° W 232.2 ft. (Rec. 354.1 ft. = 233.6 ft.)  
 I set a steel post 3' North of cor. w/ sign, 54.4.

Section Cor. to Sections 29, 30, 31, 32, T75, R45E  
 Find 2 1/2" iron pipe with Brass Cap stamped as shown, from which:  
 OBT, A pine snag, 24" diam, bears N 4° W 83.2 ft. (Rec. N 5° W 125.1 ft. = 82.5 ft.), scribe marks "RE S BT" visible on open blaze.  
 A pine, 12" diam, bears N 44° E 33.3 ft. (Rec. 49.1 ft. = 32.3 ft.), open face w/ scribes visible.  
 A pine, 9" diam, bears S 43° E 64.5 ft. (Rec. 97.1 ft. = 64.0 ft.), open face w/ scribes visible.  
 A pine, 12" diam, bears S 73° W 57.0 ft. (Rec. 89.1 ft. = 58.7 ft.) open face w/ scribes visible.  
 A fir, 15" diam, bears N 75° W 68.0 ft. (Rec. N 45° W 102.1 ft. = 67.3 ft.)

1/2 Cor. to Sections 29 & 32, T75, R45E  
 Find 2 1/2" iron pipe with Brass Cap stamped as shown, from which:  
 OBT, A pine, 28" diam, bears S 43° E 38.3 ft. (58.1 ft. as per rec. scribes "A" visible on partly opened face.  
 OBT, A pine, 30" diam, bears N 60° W 68.6 ft. (104.1 ft.) as per rec. scribe "1" visible on partly opened face.  
 Both BTs in good condition.

NOTE: The original field notes for this plat are in Field Books 1 thru 9 for Fizz-Eagle Cadastral Survey

REFERENCE MATERIAL: Original G.L.O. Plats and Notes, B.L.M. Reimbursement Notes, Private Surveyor's Reimbursement Notes of record.

NOTE: FILED HERewith ARE USES FORMS R6-7100-57, CERTIFIED RECORD OF LAND CORNER MONUMENTATION FOR THE FOLLOWING CORNERS (denoted by standard index file numbers):

- T75, R45E: V-8, V-17, W-13, X-5, X-7, X-8, X-11, X-17, C-S-NE 1/4 S.33, and S-N 1/4 S.33 & S.34
- T85, R45E: A-5, A-7, A-9, A-11, A-13, A-14, A-15, A-16, A-17, A-18, A-19, B-16, B-17, C-13, C-14, C-15, C-16, C-17, D-13, D-14, D-17, E-5, E-13, E-14, E-15, E-16, E-17, E-21, G-13, and J-13

CERTIFICATION:  
 I, Victor M. McLind, a registered land surveyor in the State of Oregon, hereby certify that this plat and the notes hereon, or attached, are a correct representation of a survey I performed from October, 1979 to July, 1980, for the U.S. Forest Service, in accordance with the statutes of the State of Oregon and with the articles of my contract.

REGISTERED PROFESSIONAL LAND SURVEYOR

Victor M. McLind  
 Registered Land Surveyor  
 Oregon License No. 934

OREGON  
 JULY 17 1980  
 VICTOR M. MCLIND  
 934

**PLAT OF SURVEY**  
 LOCATED IN  
 T75, R45E AND T85, R45E, WILLAMETTE MERIDIAN  
 BAKER COUNTY, OREGON

FOR  
 THE UNITED STATES DEPARTMENT OF AGRICULTURE  
**WALLOWA-WHITMAN NATIONAL FOREST**

BY VICTOR M. MCLIND, MILTON-FREEWATER, ORE.  
 OCT. 1979 - JULY, 1980

BEARINGS BASED ON SOLAR OBSERVATION

**FIZZ-EAGLE CADASTRAL SURVEY**  
 CONTRACT NUMBER 53-04H-9-7537N

FILED AUG 11 1980  
 BAKER COUNTY SURVEYOR  
 SURVEY NO. 7-45-45  
 (8-45-16)