

CERTIFIED RECORD OF LAND CORNER MONUMENTATION

History of original corner establishment:

Original corner was established by C.M. FOSTER IN December 1882 under instructions dated October, 23, 1882.

Set 4"x4" squared post marked E.M.W. No. 4-126

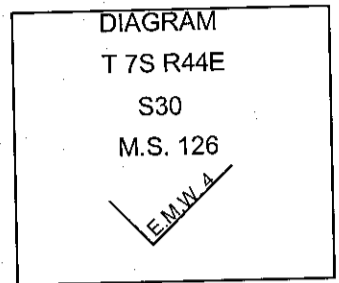
1982 Survey by Carl E. Sundet: (see Record Survey no. 7-44-37 and LCR no. 7-44-31)

Found 4"x4" scribed post in mound of stone, Set 2-1/2" alum. pipe with 3-1/4" alum. cap in mound of stone:

From Which:

A Ponderosa Pine, 8" diam. bears N 54°E, 37.7 feet dist. mkd. EMW4 MS 126 BT
A Ponderosa Pine, 9" diam. bears S 68°W, 16.9 feet dist. mkd. EMW4 MS 126 BT

index no. n/a



Description of corner evidence found:

Found 3-1/4" diameter alum. cap on 2-1/2" alum. pipe projecting 3" above ground in collar of stone. Alum. cap stamped as shown:

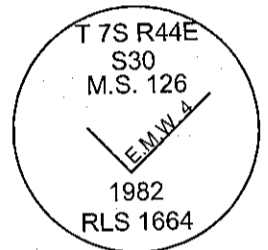
From Which:

A Ponderosa Pine, 12" diam. bears N 54°E, 37.7 feet dist. with overgrown blaze.
A Ponderosa Pine, (dead) 10" diam. bears S 68°W, 16.9 feet dist. with healed over blaze

Corner is witnessed with 6' steel fence post 5' northerly and 5' easterly. Post have USFS boundary signs and survey monument signs attached.

Placed new bearing tree tag and brass washer stamped "G WAGNER" LS 02817 on face of BT blaze. Painted blazes red and 6" red band around tree above BT Tag on all bearing trees.

stamping:



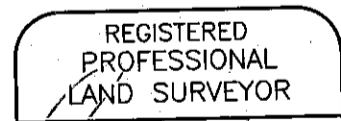
Description of monument and accessories I established to perpetuate the original location of this corner:

From Which: (by magnetic declination of 20°East)

New Bearing Tree:

A Ponderosa Pine, 8" diam. bears S 33°W, 21.1 feet dist. mkd. EMW4 MS126 BT

Placed new bearing tree tag and brass washer stamped "G WAGNER" LS 02817 on face of BT blaze. Painted blazes red and 6" red band around tree above BT Tag on all bearing trees.



Gary B. Wagner
OREGON
JUNE 30, 1997
GARY B. WAGNER
02817LS

RENEWS 6/30/12

Office of County Surveyor, County of Baker
State of Oregon, I hereby certify that the within instrument was filed in this office
for record on the _____ day of _____ 2010

FILED Oct. 4, 2010
BAKER COUNTY SURVEYOR
SURVEY NO. 7-44-263