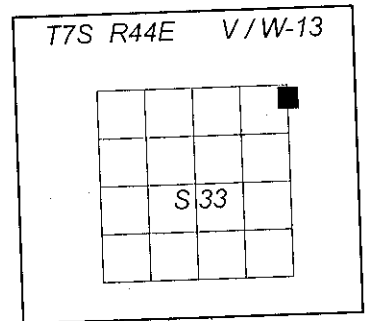


**CERTIFIED RECORD OF LAND CORNER MONUMENTATION**

**History of original corner establishment:**

Corner not previously monumented. The position of this corner is established by the methods and procedures defined in the U.S. Bureau of Land Management, Manual of Survey Instructions '73 (Manual), and as shown on Record of Survey filed with the Baker County Surveyor as CS -----.



**Description of corner evidence found:**

None.

**Description of monument and accessories I established to perpetuate original location of this corner:**

At the position determined by survey, Willowa County Survey No. -----:

Set a 3½ ins. diam. alum. cap on a 2½ ins. diam. alum. post, 30 ins. long, buried 25 ins. in the ground, with 3' diam. stone mound, and clear DEEP-1 magnet at base, mkd. as shown:

From which

A Douglas fir, 15 ins. diam., bears N. 30° E., 31.5 ft. dist., mkd. X BT, on double blaze, with washer in side center.

A Douglas fir, 16 ins. diam., bears S. 39° E., 18.4 ft. dist., mkd. X BT, on double blaze, with washer in side center.

CORS '02 geographic position:

Lat. 44°55'06.4" N

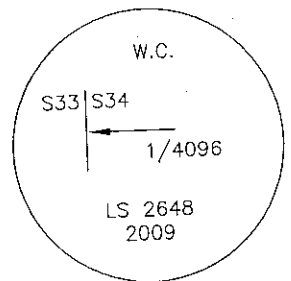
Long. 117°19'13.9" W

All bearing trees are painted with red bands, and have Bearing Tree (54-3) and Land Survey Monument (54-9) signs attached. All new bearing trees have a metal washer stamped "LS 2648" nailed in the side center.

Posted National Forest Boundary S. 89°49'50" E. from corner with Property Boundary (54-2) signs, and a Land Survey Monument (54-9) sign on nearby post. National Forest Boundary Line running N. 7°59'18" E. is in Eagle Creek and is not posted.

Witnesses: Kristina Powell and Matt Brockamp

Date: August 21, 2009



REGISTERED  
PROFESSIONAL  
LAND SURVEYOR

*Ron Walter*

OREGON  
JANUARY 18, 1994  
RON C. WALTER  
2648

Renewal Date: June 30, 2010

Office of \_\_\_\_\_ County Surveyor \_\_\_\_\_ County of Baker  
State of Oregon, I hereby certify that the within instrument was filed in this office  
for record on the \_\_\_\_\_ day of \_\_\_\_\_, 20\_\_\_\_  
\_\_\_\_\_ by \_\_\_\_\_  
(COUNTY OFFICIAL) (DEPUTY)

FILED Feb. 24, 2010

BAKER COUNTY SURVEYOR

SURVEY NO. 7-44-237