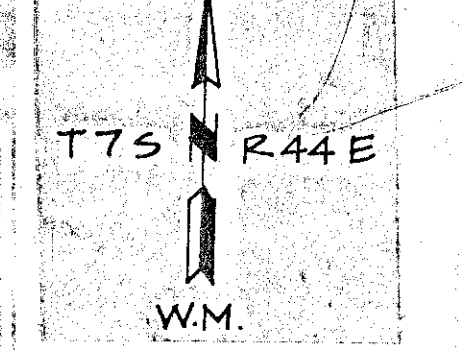


NOTES

- 1 S-S 1/64 SECTIONS 27 & 28 FALLS IN EAGLE CREEK. W.C. SET N 2°43' 20"W, 125.00 FT.
- 2 C-S-NW 1/64 SECTION 34 FALLS IN POND. W.C. SET N 7°14' 19"E, 95.56 FT.
- 3 C-E-SW-NW 1/256 SECTION 34 FALLS ON ACTIVE SLIDE. R.M. SET S 63° 55' 00"E, 36.11 FT, ON RIDGE. FROM RM C-W-W-NW 1/256 SECTION 34 BEARS N 12° 12' 25" W.
- 4 C-E-NE-SW 1/256 SECTION 34 FALLS IN EAGLE CREEK. W.C. SET S 89°16' 56"W, 100.00 FT.

SECTIONS 27, 28, 33 & 34



BASIS OF BEARING
SOLAR OBSERVATION

MEAN MAGNETIC DECLINATION
N 20° 00' E

REFERENCE MATERIAL
ORIGINAL G.L.O. PLATS & NOTES. FIELD BOOKS 1-24.

STANDARD INDEX FILE NUMBERS;
SHEET 6 OF 6 = U-12.50, V-13(+0.50), V-13.25 (+0.50), V-12.50, V-13.25, W-12.50, W-12.75, W-13.25, W-12.75 (-0.50), X-13 (+0.50), W-14 (-0.50), W-14.25 (-0.50), X-13 (+0.25), X-13.5 (+0.25), X-13.50, X-14.25, X-15.25, X-13.5 (-0.25), X-14 (-0.25), X-14 (-0.50), X-14.75 (-0.50), Y-14.75, AND Y-15.25. + = NORTH & - = SOUTH.

SURVEY HISTORY

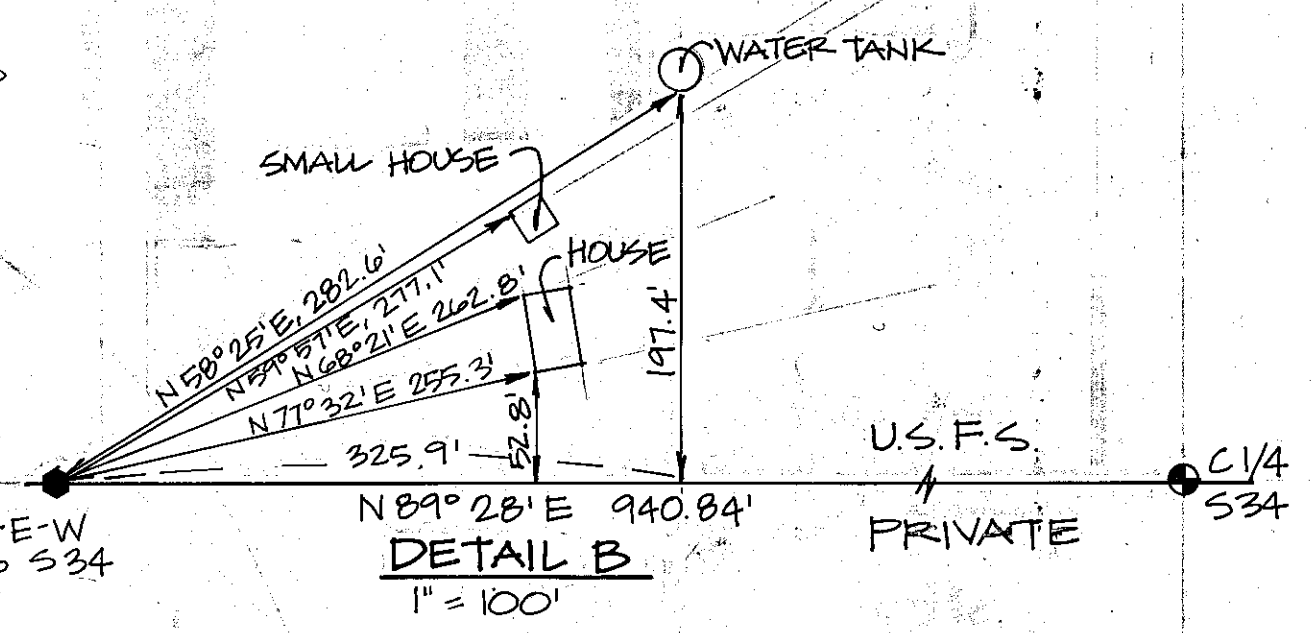
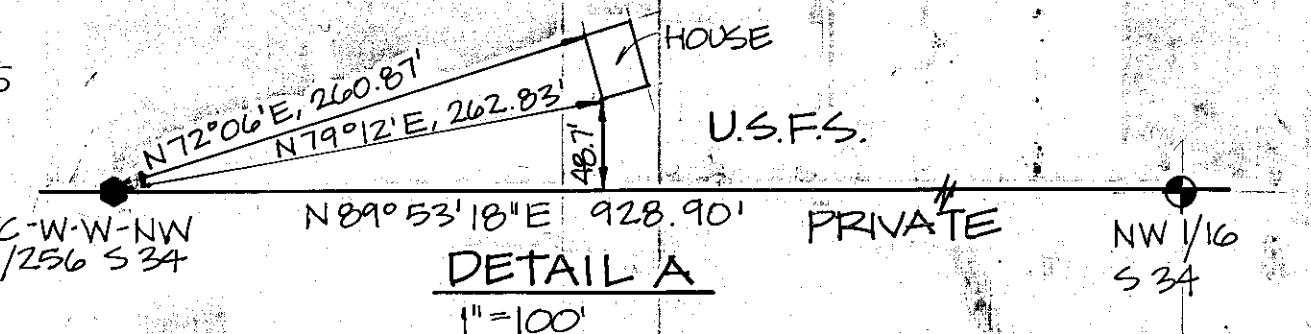
TYPED DOCUMENT FILED WITH PLATS.
CANCELLED SEE # 7-44-227

NARRATIVE

TYPED 2 PAGE DOCUMENT FILED WITH PLATS.

LEGEND

- FOUND CORNER. BRASS CAP OF RECORD
- ▲ ALUMINUM CAP SET BY P.L.S.#1664 IN 1982 & 1983
- CORNER SET FROM ORIGINAL G.L.O. EVIDENCE. BRASS CAP.
- ⊙ BRASS OR ALUMINUM CAP SET BY SURVEY
- CORNERS SET BY SURVEY TO MARK PROPERTY LINE. 1/256 & 1/64 CORNERS.
- POSTED U.S.F.S. BOUNDARY
- [] METERS



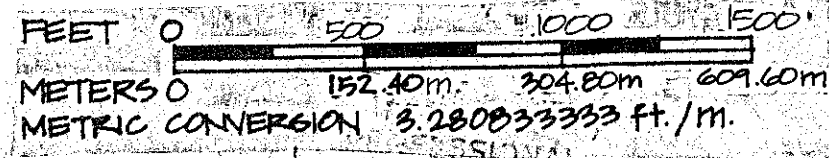
I, BARRY B. BARBOUR, a registered land surveyor in the State of Oregon, hereby certify that this plat and notes hereon, or attached are a correct representation of a survey I performed during 1982 to 1985, for the U.S. Forest Service in accordance with the articles of the contract and with the Statutes of the State of Oregon. Contract number 53-04M3-2-2781

Barry B. Barbour
Barry B. Barbour
Registered Land Surveyor
Oregon License 1051

REGISTERED PROFESSIONAL LAND SURVEYOR

Barry B. Barbour
OREGON
OCT. 17, 1975
BARRY B. BARBOUR
1051

FILED 7-7-85
BAKER COUNTY SURVEYOR
SURVEY NO. 7-44-78



PORTION OF SECTIONS 27, 28, 33 and 34
T 7 S, R 44 E, W.M.
BAKER COUNTY, OREGON
U.S.F.S. WALLOWA-WHITMAN NATIONAL FOREST

Scale: 1" = 500' 1" = 152.40m	BARRY B. BARBOUR Professional Land Surveyor P.O. Box 4811 BOISE, IDAHO	Sheet No. 6
Date: AUG. 1985		6